

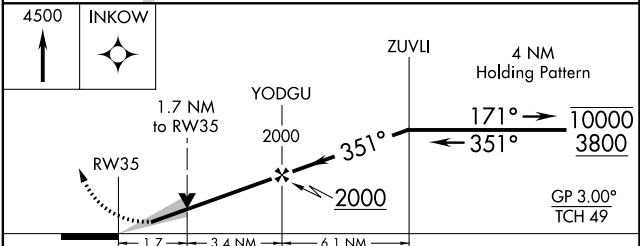
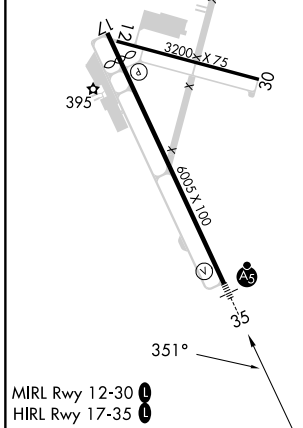
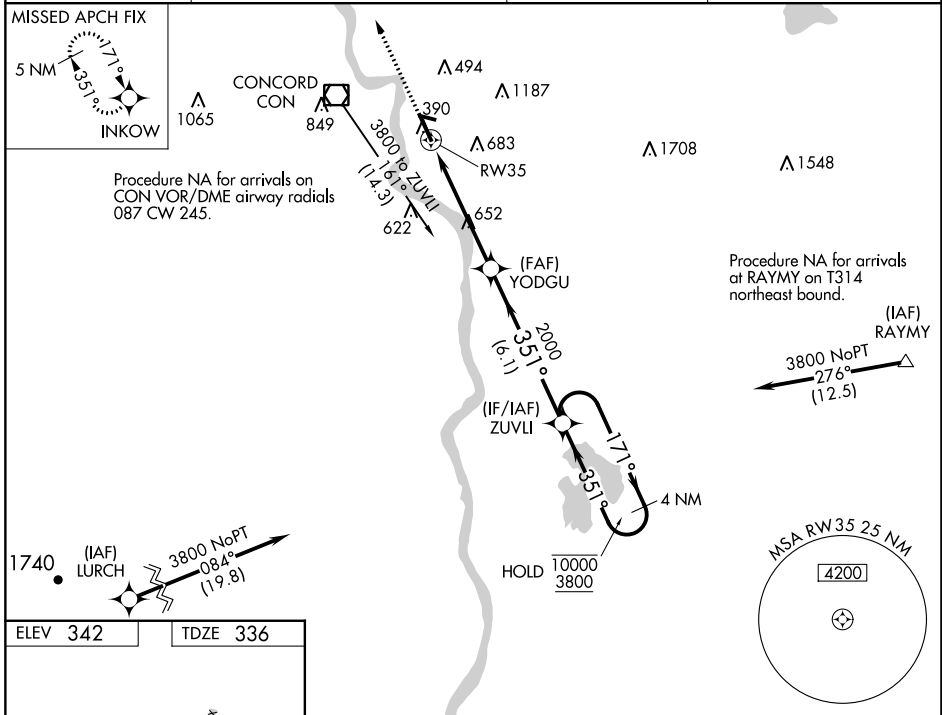
WAAS CH <b>90112</b> <b>W35A</b>	APP CRS <b>351°</b>	Rwy Idg <b>6005</b> TDZE <b>336</b> Apt Elev <b>342</b>
--	------------------------	--

# RNAV (GPS) RWY 35

CONCORD MUNI (CON)

RNP APCH - GPS.	MALSR 	MISSED APPROACH: Climb to 4500 direct INKOW and hold, continue climb-in-hold to 4500.
<p>⚠ Circling Rwy 12, 17, 30 NA at night. For uncompensated Baro-VNAV systems,                  ⚠ LNAV/VNAV NA below -20°C or above 54°C. For inop ALS, increase                  LNAV/VNAV visibility to 1½ SM, LNAV Cats C and D visibility to 1½ SM.</p>		

ASOS <b>132.325</b>	BOSTON APP CON <b>127.35 269.075</b>	CLNC DEL <b>133.65</b>	UNICOM <b>122.7 (CTAF) 0</b>
------------------------	---	---------------------------	---------------------------------



ELEV 342	TDZE 336			
4500	INKOW			
CATEGORY	A	B	C	D
LPV DA	586-½ 250 (300-½)			
LNAV/VNAV DA	967-1¾ 631 (700-1¾)			
LNAV MDA	940-½	604 (600-½)	940-1¾	604 (600-1¾)
CIRCLING	940-1 598 (600-1)	1080-1 738 (800-1)	1500-3	1158 (1200-3)

NE-1, 28 NOV 2024 to 26 DEC 2024

NE-1, 28 NOV 2024 to 26 DEC 2024