

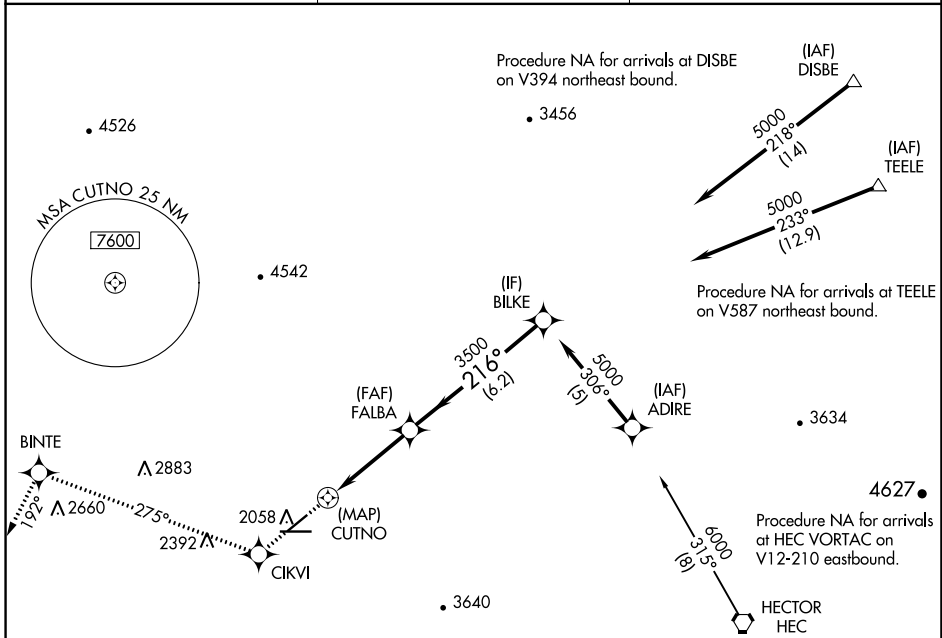
APP CRS	Rwy Idg	<b>5123</b>
<b>216°</b>	TDZE	<b>1918</b>
	Apt Elev	<b>1930</b>

# RNAV (GPS) RWY 22

BARSTOW-DAGGETT (DAG)

RNP APCH.	MISSED APPROACH: Climb to 8000 direct CIKVI and on track 275° to BINTE and on track 192° to NULMN and hold, continue climb-in-hold to 8000.
-----------	---

ASOS <b>132.175</b>	LOS ANGELES CENTER <b>132.5 284.7</b>	UNICOM <b>123.0 (CTAF) 0</b>
------------------------	--	---------------------------------

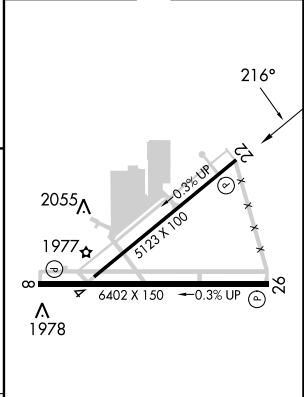
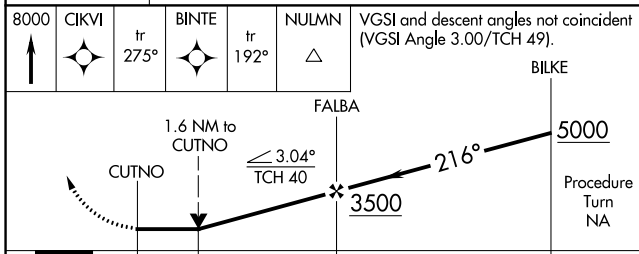


SW-3, 28 NOV 2024 to 26 DEC 2024

SW-3, 28 NOV 2024 to 26 DEC 2024

MISSED APCH FIX	NULMN	
8000	CIKVI tr 275°	BINTE tr 192°
	NULMN Δ	
	VGSI and descent angles not coincident (VGSI Angle 3.00/TCH 49).	

ELEV 1930	TDZE 1918
-----------	-----------



CATEGORY	A	B	C	D
LNAV MDA	2800-1¼	882 (900-1¼)	2800-2¾ 882 (900-2¾)	2800-3 882 (900-3)

MIRL Rwy 4-22 and 8-26 0