

BACHMAN ONE DEPARTURE  
(BACH1.TTT) 050CT23

(BACH1.TTT) 24305  
BACHMAN ONE DEPARTURE

A1-106 (FAA)

DALLAS LOVE FLD (DAL)  
DALLAS, TEXAS

LONE STAR DEP CON  
118.55 290.35  
D-ATIS  
120.15  
CLNC DEL  
127.9  
CPDLC  
GND CON  
121.75 348.6  
LOVE TOWER  
123.7 239.3

DME and RADAR required.

LITTLE ROCK  
113.9 LT : : : :  
Chan 86

TOP ALTITUDE:  
5000

BONHAM  
114.6 BYP : : : :  
Chan 93

TEXARKANA  
116.3 TXK : : : :  
Chan 110

TAKEOFF MINIMUMS  
Rwys 13L, 31L/R: NA - Noise Abatement.  
Rwy 13R: Standard with minimum climb of  
482'/NM to 1700.

NOTE: This DP is to be used only upon  
assignment by Love Tower normally  
between 2100-0600 LCL time.  
NOTE: SOLDO Transition: ATC assigned.  
NOTE: BELCHER Transition: For aircraft  
inbound to Jackson, Monroe and  
Shreveport terminal areas.

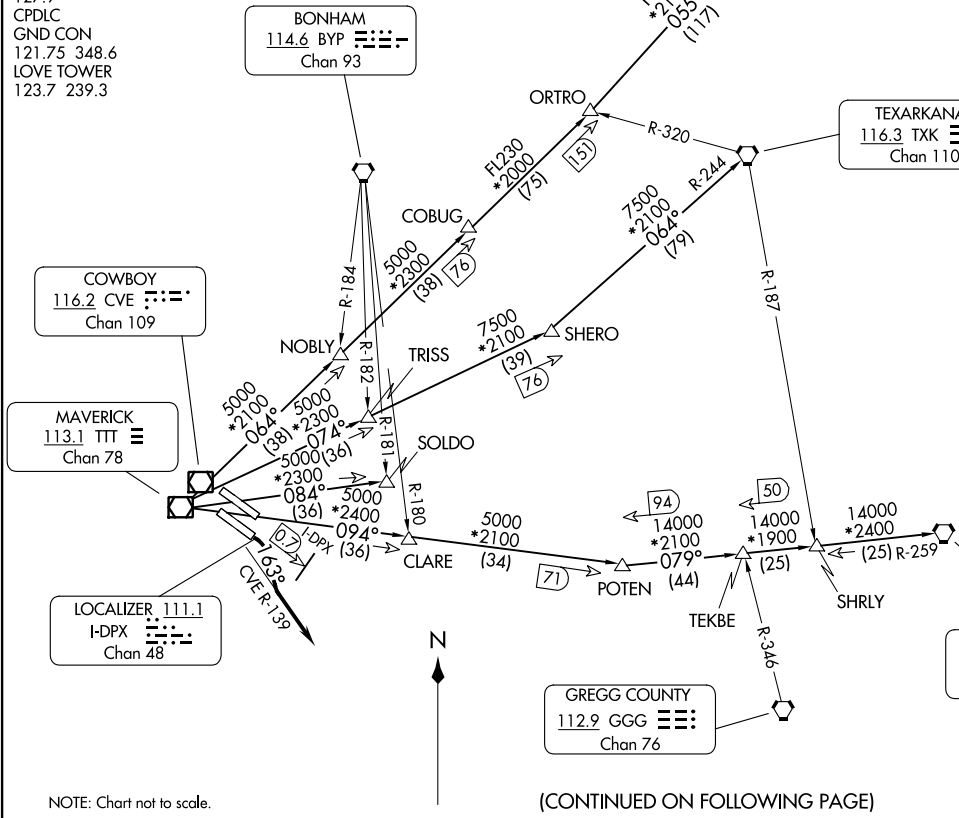
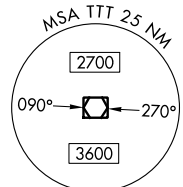
COWBOY  
116.2 CVE : : : :  
Chan 109

MAVERICK  
113.1 TTT : : : :  
Chan 78

LOCALIZER 111.1  
I-DPX : : : :  
Chan 48

GREGG COUNTY  
112.9 GGG : : : :  
Chan 76

BELCHER  
117.4 EIC : : . . .  
Chan 121



NOTE: Chart not to scale.

(CONTINUED ON FOLLOWING PAGE)

DALLAS, TEXAS  
DALLAS LOVE FLD (DAL)

# BACHMAN ONE DEPARTURE



## DEPARTURE ROUTE DESCRIPTION

TAKEOFF RUNWAY 13R: Climb on heading 163° no later than 0.7 DME outbound on I-DPX localizer southeast course to intercept and climb on CVE R-139 for RADAR vectors to appropriate route, unless otherwise advised maintain 5000, expect filed altitude 10 minutes after departure.

BELCHER TRANSITION (BACH1.EIC): From over TTT VOR/DME on TTT R-094 to POTEN, then on EIC R-259 to EIC VORTAC.

LITTLE ROCK TRANSITION (BACH1.LIT): From over TTT VOR/DME on TTT R-064 to ORTRO, then on LIT R-235 to LIT VORTAC.

SOLDO TRANSITION (BACH1.SOLDO): From over TTT VOR/DME on TTT R-084 to SOLDO.

TEXARKANA TRANSITION (BACH1.TXK): From over TTT VOR/DME on TTT R-074 to SHERO, then on TXK R-244 to TXK VORTAC.

SC-2, 28 NOV 2024 to 26 DEC 2024

SC-2, 28 NOV 2024 to 26 DEC 2024