

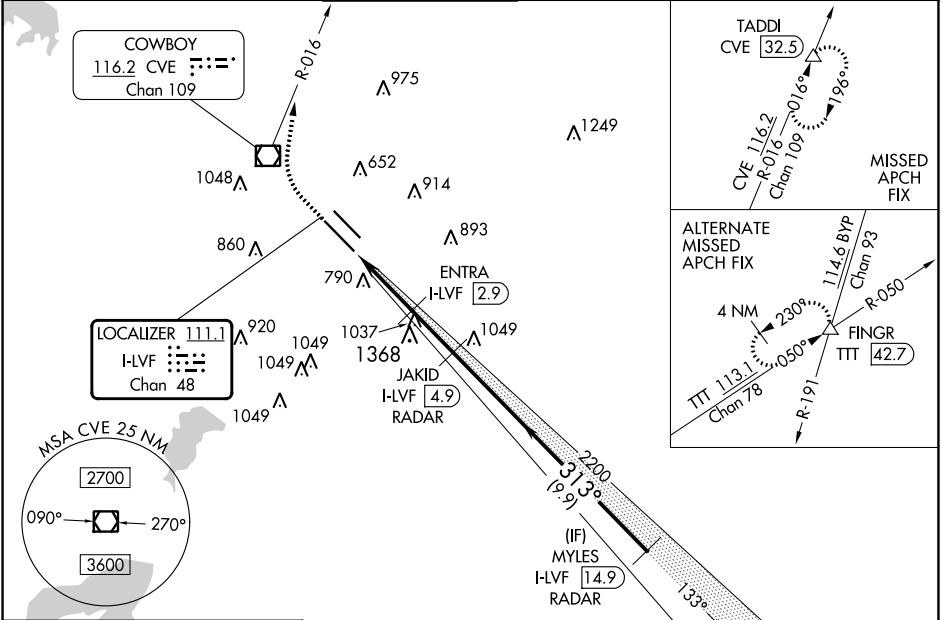
LOC/DME I-LVF 111.1 Chan 48	APP CRS 313°	Rwy Idg 8000 TDZE 477 Apt Elev 487
---	------------------------	---

ILS or LOC RWY 31L

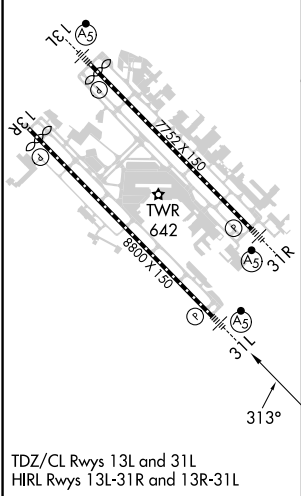
DALLAS LOVE FLD (DAL)

DME required. RADAR required for procedure entry.	MALS R 	MISSED APPROACH: Climb to 4000 direct CVE VOR/DME and on CVE R-016 to TADDI/CVE 32.5 DME and hold.
Simultaneous approach authorized.		

D-ATIS 120.15	LONE STAR APP CON NORTH 124.3 282.275 SOUTH 125.2 343.65	LOVE TOWER 123.7 239.3	GND CON 121.75 348.6	CLNC DEL 127.9	CPDLC
-------------------------	--	----------------------------------	--------------------------------	--------------------------	-------



ELEV 487	D	TDZE 477
-----------------	----------	-----------------



4000	CVE 	CVE R-016	TADDI 	JAKID I-LVF (4.9) RADAR	MYLES I-LVF (14.9) RADAR
	I-LVF DME ANTENNA I-LVF (0.2)	ENTRA I-LVF (2.9)		2200	2500
	1520	2200			GS 3.08° TCH 55
	2.5 NM	0.6 NM	2.1 NM	9.9 NM	
CATEGORY	A		B	C	D
S-ILS 31L	677/18		200 (200-1/2)		
S-LOC 31L	1340/24 863 (900-1/2)	1340/40 863 (900-3/4)	1340-2	863 (900-2)	
C CIRCLING	1340-1 1/4	853 (900-1 1/4)	1340-2 1/2 853 (900-2 1/2)	1520-3 1033 (1100-3)	

SC-2, 28 NOV 2024 to 26 DEC 2024

SC-2, 28 NOV 2024 to 26 DEC 2024