



LOC/DME I-OVW 111.5 Chan 52	APP CRS 313°	Rwy Idg TDZE Apt Elev 6952 487 487
--	------------------------	--

ILS or LOC RWY 31R

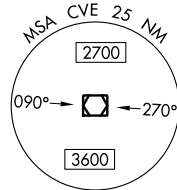
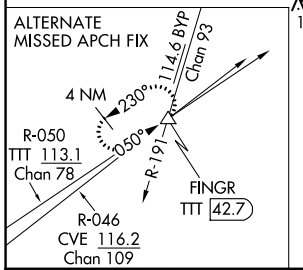
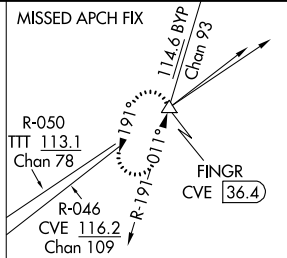
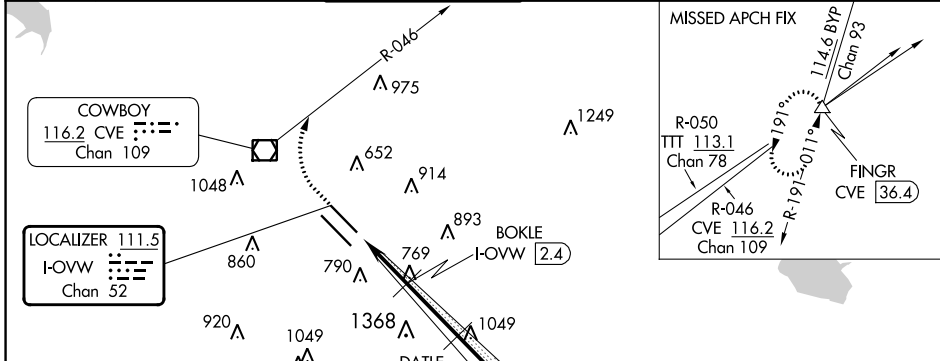
DALLAS LOVE FLD (DAL)

DME required.
RADAR required for procedure entry.

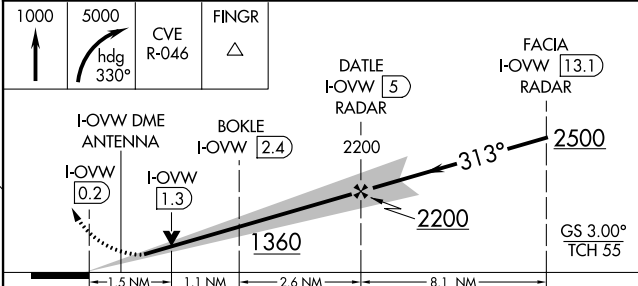
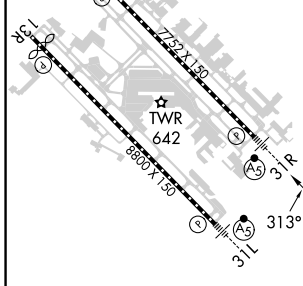
MALSR  MISSED APPROACH: Climb to 1000 then climbing right turn to 5000 on heading 330° and CVE VOR/DME R-046 to FINGR INT/CVE 36.4 DME and hold.

 Simultaneous approach authorized.
** RVR 1800 authorized with use of FD or AP or HUD to DA.

D-ATIS 120.15	LONE STAR APP CON NORTH 124.3 282.275 SOUTH 125.2 343.65	LOVE TOWER 123.7 239.3	GND CON 121.75 348.6	CLNC DEL 127.9	CPDLC
-------------------------	--	----------------------------------	--------------------------------	--------------------------	-------



ELEV 487	D	TDZE 487
-----------------	----------	-----------------



TDZ/CL Rwys 13L and 31L	TDZ/CL Rwys 13R and 31R	TDZ/CL Rwys 13L-31R and 13R-31L		
FAF to MAP 5.2 NM				
Knots	60 90 120 150 180			
Min:Sec	5:12 3:28 2:36 2:05 1:44			
CATEGORY	A	B	C	D
S-ILS 31R **	687/24 200 (200-1/2)			
S-LOC 31R	1020/24	533 (600-1/2)	1020/55	533 (600-1)
<input checked="" type="checkbox"/> CIRCLING	1020-1 533 (600-1)	1140-1 653 (700-1)	1220-2 733 (800-2)	1520-3 1033 (1100-3)

SC-2, 28 NOV 2024 to 26 DEC 2024

SC-2, 28 NOV 2024 to 26 DEC 2024