

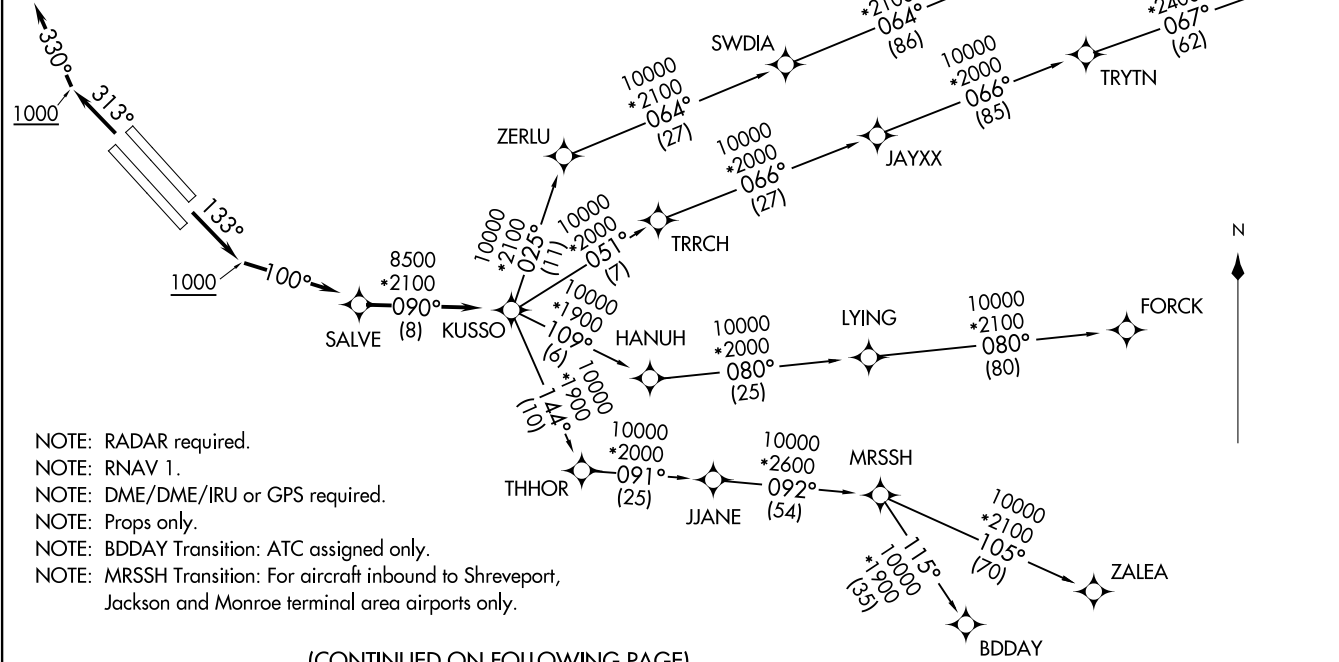
KUSSO ONE DEPARTURE (RNAV)
(KUSSO1 .KUSSO) 24MAR22

(KUSSO1 .KUSSO) 24305
KUSSO ONE DEPARTURE (RNAV)

LONE STAR DEP CON
125.2 343.65 (Rwys 13L/R)
124.3 282.275 (Rwys 31L/R)
D-ATIS
120.15
CLNC DEL
127.9
CPDLC
GND CON
121.75 348.6
LOVE TOWER
123.7 239.3

TOP ALTITUDE:
RWYS 13L/R: 3000
RWYS 31L/R: 2000

TAKEOFF MINIMUMS
Rwys 13L/R: Standard with a minimum climb of 500' per NM to 1200.
Rwys 31L/R: Standard with a minimum climb of 500' per NM to 1000.



- NOTE: RADAR required.
- NOTE: RNAV 1.
- NOTE: DME/DME/IRU or GPS required.
- NOTE: Props only.
- NOTE: BDDAY Transition: ATC assigned only.
- NOTE: MRSSH Transition: For aircraft inbound to Shreveport, Jackson and Monroe terminal area airports only.

(CONTINUED ON FOLLOWING PAGE)

NOTE: Chart not to scale.

DALLAS, TEXAS
DALLAS LOVE FLD (DAL)
(KUSSO1 .KUSSO) 24MAR22

DALLAS LOVE FLD (DAL)
DALLAS, TEXAS
AL-106 (FAA)

KUSSO ONE DEPARTURE (RNAV)



DEPARTURE ROUTE DESCRIPTION

TAKEOFF RUNWAYS 13L/R: Climb on heading 133° to 1000, thence

. . . . left turn heading 100° or as assigned by ATC, expect RADAR vectors to SALVE, then on track 090° to KUSSO, then on (transition). Maintain 3000. Expect filed altitude 10 minutes after departure.

TAKEOFF RUNWAYS 31L/R: Climb on heading 313° to 1000, thence

. . . . right turn heading 330° or as assigned by ATC, expect RADAR vectors to SALVE, then on track 090° to KUSSO, then on (transition). Maintain 2000. Expect filed altitude 10 minutes after departure.

- BDDAY TRANSITION (KUSSO1.BDDAY)
- BSKAT TRANSITION (KUSSO1.BSKAT)
- FORCK TRANSITION (KUSSO1.FORCK)
- LOOSE TRANSITION (KUSSO1.LOOSE)
- MRSSH TRANSITION (KUSSO1.MRSSH)
- ZALEA TRANSITION (KUSSO1.ZALEA)

SC-2, 28 NOV 2024 to 26 DEC 2024

SC-2, 28 NOV 2024 to 26 DEC 2024