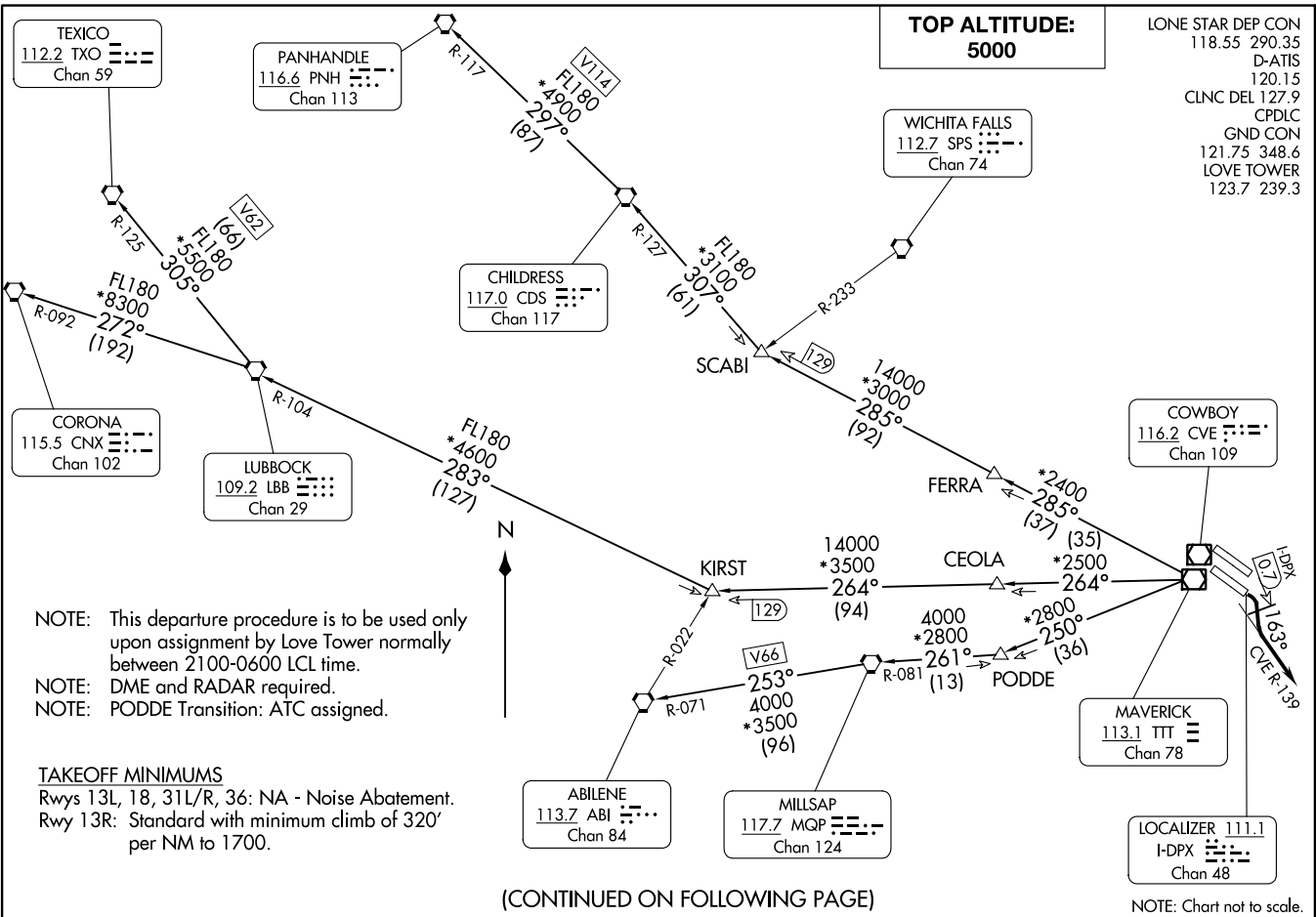


LOVE SIX DEPARTURE
(LOVE6.TTT) 10OCT19

DALLAS, TEXAS
DALLAS LOVE FLD (DAL)



(CONTINUED ON FOLLOWING PAGE)

(LOVE6.TTT) 24305
LOVE SIX DEPARTURE

AL-106 (FAA)

DALLAS LOVE FLD (DAL)
DALLAS, TEXAS

LONE STAR DEP CON
118.55 290.35
D-ATIS
120.15
CLNC DEL 127.9
CPDLC
GND CON
121.75 348.6
LOVE TOWER
123.7 239.3

LOVE SIX DEPARTURE



DEPARTURE ROUTE DESCRIPTION

TAKEOFF RUNWAY 13R: Turn right heading 163° not later than 0.7 DME outbound on the I-DPX localizer southeast course, to intercept and climb on the CVE R-139 for RADAR vectors to appropriate route. Unless otherwise advised maintain 5000 feet and expect filed altitude 10 minutes after departure.

ABILENE TRANSITION (LOVE6.ABI): From over TTT VOR/DME on TTT R-250 to PODDE, then on MQP R-081 to MQP VORTAC, then on MQP R-253 and ABI R-071 to ABI VORTAC.

CHILDRESS TRANSITION (LOVE6.CDS): From over TTT VOR/DME on TTT R-285 to SCABI, then on CDS R-127 to CDS VORTAC.

CORONA TRANSITION (LOVE6.CNX): From over TTT VOR/DME on TTT R-264 to KIRST, then on LBB R-104 to LBB VORTAC, then on LBB R-272 and CNX R-092 to CNX VORTAC.

LUBBOCK TRANSITION (LOVE6.LBB): From over TTT VOR/DME on TTT R-264 to KIRST, then on LBB R-104 to LBB VORTAC.

MILLSAP TRANSITION (LOVE6.MQP): From over TTT VOR/DME on TTT R-250 to PODDE, then on MQP R-081 to MQP VORTAC.

PANHANDLE TRANSITION (LOVE6.PNH): From over TTT VOR/DME on TTT R-285 to SCABI, then on CDS R-127 to CDS VORTAC, then on CDS R-297 and PNH R-117 to PNH VORTAC.

PODDE TRANSITION (LOVE6.PODDE): From over TTT VOR/DME on TTT R-250 to PODDE.

TEXICO TRANSITION (LOVE6.TXO): From over TTT VOR/DME on TTT R-264 to KIRST, then on LBB R-104 to LBB VORTAC, then on LBB R-305 and TXO R-125 to TXO VORTAC.

SC-2, 28 NOV 2024 to 26 DEC 2024

SC-2, 28 NOV 2024 to 26 DEC 2024