

RNAV (RNP) Z RWY 31L

DALLAS LOVE FLD (DAL)

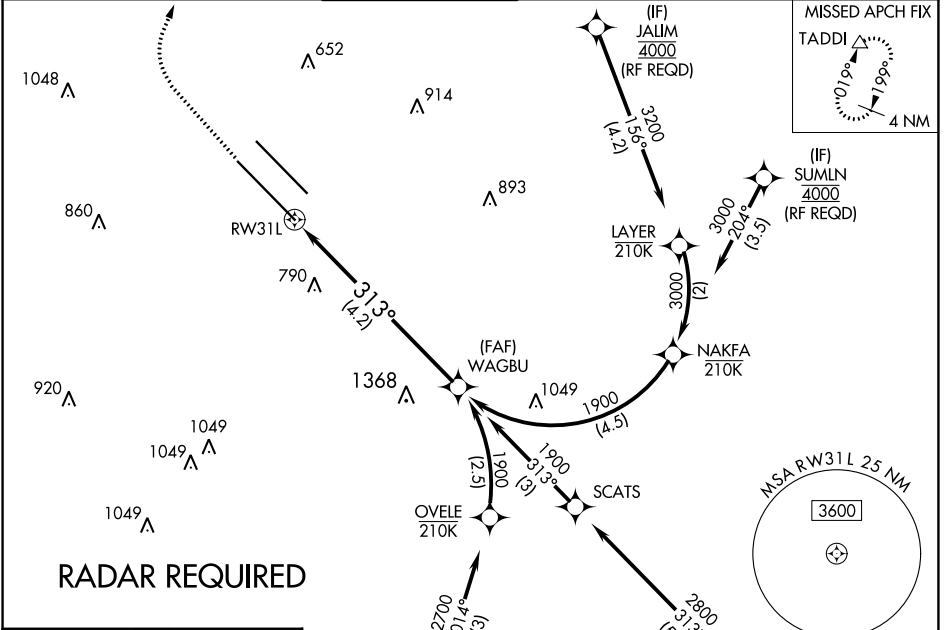
APP CRS 313°	Rwy Idg 8000
	TDZE 476
	Apt Elev 487

▼ For uncompensated Baro-VNAV systems, procedure NA below -5°C (23°F) or above 48°C (119°F). Simultaneous approach authorized. GPS required. Use of FD or AP providing RNAV track guidance required during simultaneous operations. For inop MALSR, increase RNP 0.30 visibility all Cats to 2½ miles.

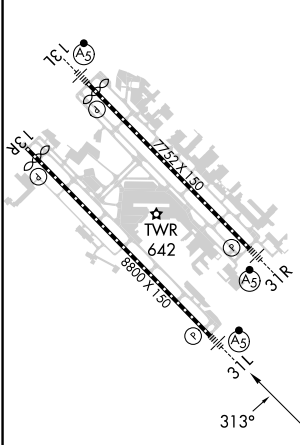
MALSR

MISSED APPROACH: Climb to 1700 then climbing right turn to 4000 direct TADDI and hold.

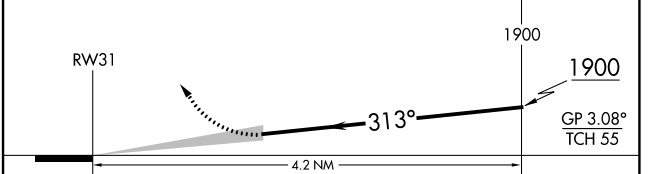
D-ATIS 120.15	LONE STAR APP CON NORTH 124.3 282.275 SOUTH 125.2 343.65	LOVE TOWER 123.7 239.3	GND CON 121.75 348.6	CLNC DEL 127.9	CPDLC
-------------------------	--	----------------------------------	--------------------------------	--------------------------	-------



ELEV 487	D	TDZE 476
----------	----------	----------



1700 4000 TADDI See planview for multiple IF locations.



CATEGORY	A	B	C	D
RNP 0.30 DA		1117-1½	641 (700-1½)	

AUTHORIZATION REQUIRED

SC-2, 28 NOV 2024 to 26 DEC 2024