


# RNAV (RNP) Z RWY 31R

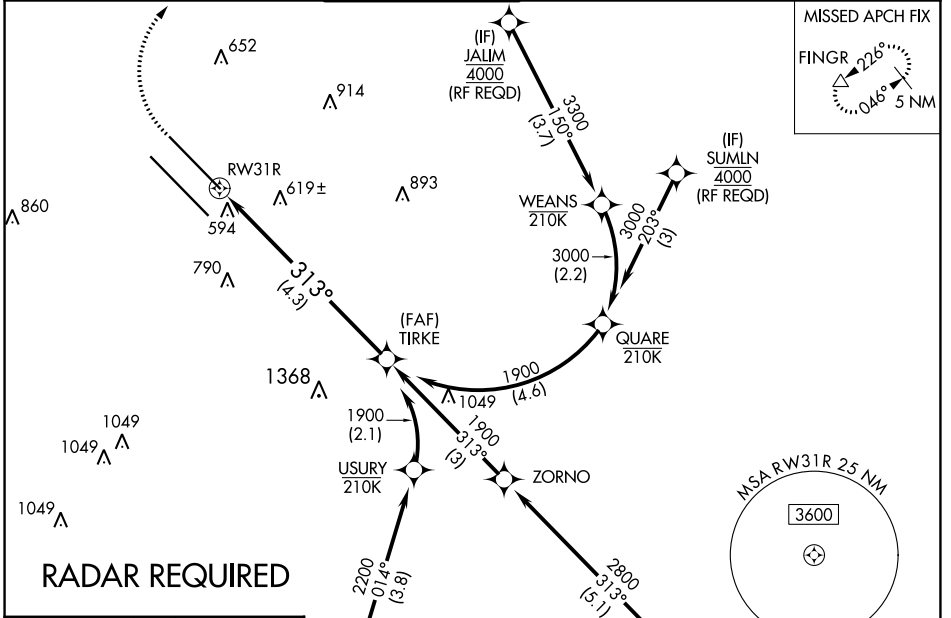
DALLAS LOVE FLD (DAL)

APP CRS <b>313°</b>	Rwy Idg <b>6952</b> TDZE <b>487</b> Apt Elev <b>487</b>
------------------------	---

RNP AR APCH.  
 ▼ For uncompensated Baro-VNAV systems, procedure NA below -5°C (23°F) or above 54°C (130°F). Use of FD or AP providing RNAV track guidance required during simultaneous operations. Simultaneous approach authorized.

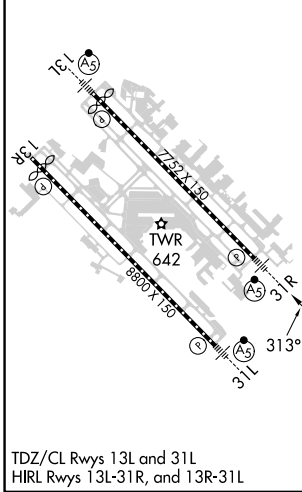
MALSR  MISSED APPROACH: Climb to 900 then climbing right turn to 5000 direct FINGR and hold.

D-ATIS <b>120.15</b>	LONE STAR APP CON NORTH <b>124.3 282.275</b> SOUTH <b>125.2 343.65</b>	LOVE TOWER <b>123.7 239.3</b>	GND CON <b>121.75 348.6</b>	CLNC DEL <b>127.9</b>	CPDLC
-------------------------	--	----------------------------------	--------------------------------	--------------------------	-------

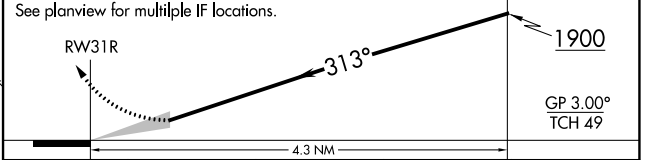


**RADAR REQUIRED**

ELEV <b>487</b>	<b>D</b>	TDZE <b>487</b>
-----------------	----------	-----------------



900 5000 FINGR VGSi and RNAV glidepath not coincident (VGSi Angle 3.00/TCH 55).  
 See planview for multiple IF locations.



CATEGORY	A	B	C	D
RNP 0.16 DA		796/24	309 (400-½)	
RNP 0.30 DA		895/45	408 (500-¾)	

TDZ/CL Rwy 13L and 31L  
 HIRL Rwy 13L-31R, and 13R-31L

SC-2, 28 NOV 2024 to 26 DEC 2024

SC-2, 28 NOV 2024 to 26 DEC 2024

**AUTHORIZATION REQUIRED**