

SWABR ONE DEPARTURE (RNAV)
(SWABR1 .SWABR) 24MAR22

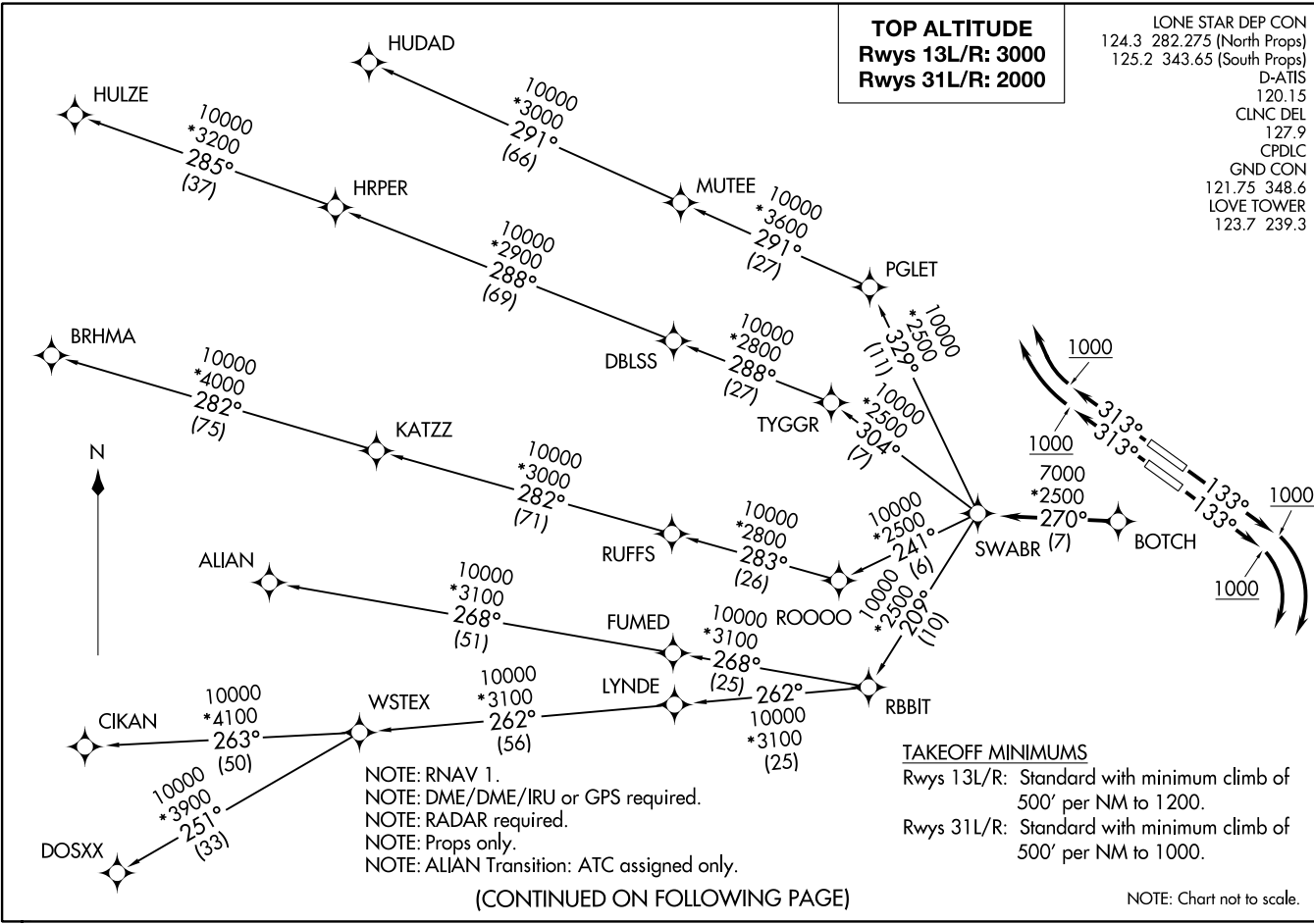
DALLAS, TEXAS
DALLAS LOVE FLD (DAL)

(SWABR1 .SWABR) 24305
SWABR ONE DEPARTURE (RNAV)

AL-106 (FAA)
DALLAS LOVE FLD (DAL)
DALLAS, TEXAS

TOP ALTITUDE
Rwys 13L/R: 3000
Rwys 31L/R: 2000

LONE STAR DEP CON
124.3 282.275 (North Props)
125.2 343.65 (South Props)
D-ATIS
120.15
CLNC DEL
127.9
CPDLC
GND CON
121.75 348.6
LOVE TOWER
123.7 239.3



(CONTINUED ON FOLLOWING PAGE)

NOTE: Chart not to scale.

SWABR ONE DEPARTURE (RNAV)



DEPARTURE ROUTE DESCRIPTION

TAKEOFF RUNWAYS 13L/R: Climb on heading 133° to 1000, thence. . . .
. . . .right turn heading 193° or as assigned by ATC, expect RADAR vectors to BOTCH,
then on track 270° to SWABR, then on (transition). Maintain 3000. Expect filed
altitude 10 minutes after departure.

TAKEOFF RUNWAYS 31L/R: Climb on heading 313° to 1000, thence. . . .
. . . .right turn heading 333° or as assigned by ATC, expect RADAR vectors to BOTCH,
then on track 270° to SWABR, then on (transition). Maintain 2000. Expect filed
altitude 10 minutes after departure.

- ALIAN TRANSITION (SWABR1.ALIAN)
- BRHMA TRANSITION (SWABR1.BRHMA)
- CIKAN TRANSITION (SWABR1.CIKAN)
- DOSXX TRANSITION (SWABR1.DOSXX)
- HUDAD TRANSITION (SWABR1.HUDAD)
- HULZE TRANSITION (SWABR1.HULZE)
- WSTEX TRANSITION (SWABR1.WSTEX)

SC-2, 28 NOV 2024 to 26 DEC 2024

SC-2, 28 NOV 2024 to 26 DEC 2024