

DAYTON EIGHT DEPARTURE
(DAY8.DAY) 16MAY24

DAYTON, OHIO
JAMES M COX DAYTON INTL (DAY)

ATIS
125.8
CLNC DEL
121.75
GND CON
121.9
DAYTON TOWER
119.9 257.7
COLUMBUS DEP ON
118.85 305.2 (091°-180°)
134.45 323.15 (181°-090°)

RADAR required.

TOP ALTITUDE:
5000

TAKEOFF MINIMUMS:
Rwy 6L/R, 24L/R, 36: Standard.
Rwy 18: 300-1 or standard with a minimum
climb of 305' per NM to 1300.

DRYER
113.6 DJB
Chan 83

PIONS

KLOEE

REELS



FORT WAYNE
117.8 FWA
Chan 125

ROSEWOOD
117.5 ROD
Chan 122

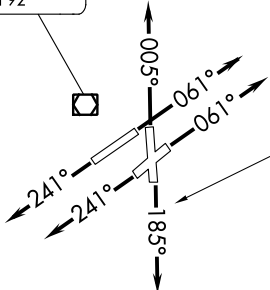
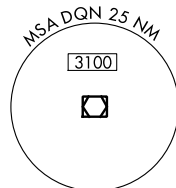
MUNCIE
114.4 MIE
Chan 91

DAYTON
114.5 DQN
Chan 92

APPLETON
116.7 APE
Chan 114

BRICKYARD
116.3 VHP
Chan 110

YELLOW BUD
112.5 XUB



(CONTINUED ON FOLLOWING PAGE)

NOTE: Chart not to scale.

(DAY8.DAY) 24137
DAYTON EIGHT DEPARTURE

AL-107 (FAA)

JAMES M COX DAYTON INTL (DAY)
DAYTON, OHIO

DAYTON EIGHT DEPARTURE



DEPARTURE ROUTE DESCRIPTION

TAKEOFF RUNWAYS 6L/R: Climb on heading 061°, thence....

TAKEOFF RUNWAY 18: Climb on heading 185°, thence....

TAKEOFF RUNWAYS 24L/R: Climb on heading 241°, thence....

TAKEOFF RUNWAY 36: Climb on heading 005°, thence....

....or assigned RADAR vectors to join assigned route/fix. All aircraft maintain 5000 or filed altitude if lower. Expect clearance to requested altitude/flight level 10 minutes after departure. Appropriate departure control frequency will be assigned by ATC. Aircraft filed over APE VORTAC, expect vectors to intercept APE R-260.

EC-2, 28 NOV 2024 to 26 DEC 2024

EC-2, 28 NOV 2024 to 26 DEC 2024