

LOC I-ATD <b>108.9</b>	APP CRS <b>061°</b>	Rwy Idg <b>10900</b> TDZE <b>998</b> Apt Elev <b>1009</b>
---------------------------	------------------------	---

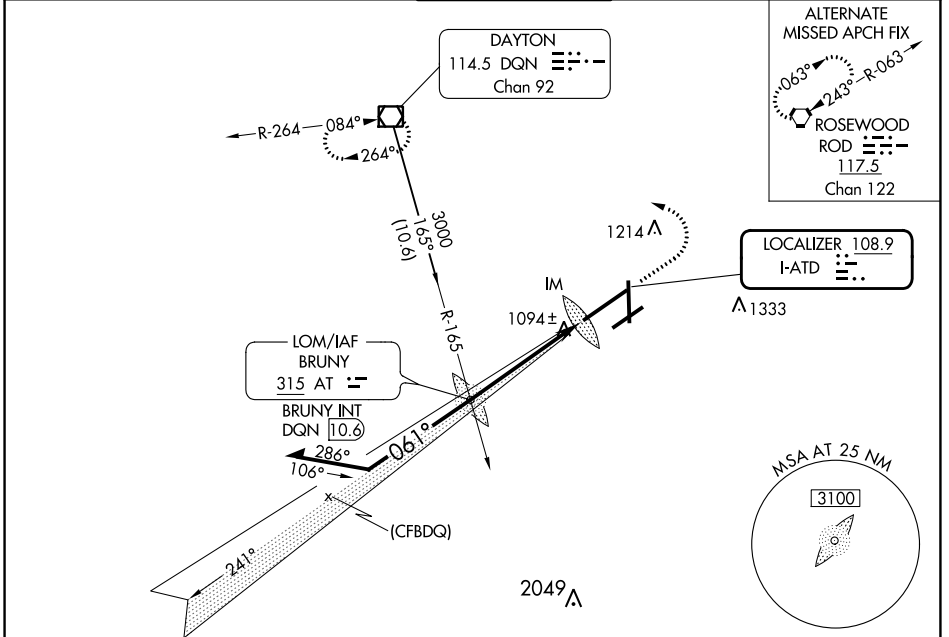
# ILS RWY 6L (CAT II & III)

## JAMES M COX DAYTON INTL (DAY)

Simultaneous approach authorized.  
 CAT II: RVR 1000 authorized with specific OPSPEC, MSPEC, or LOA approval and use of autoland or HUD to touchdown.

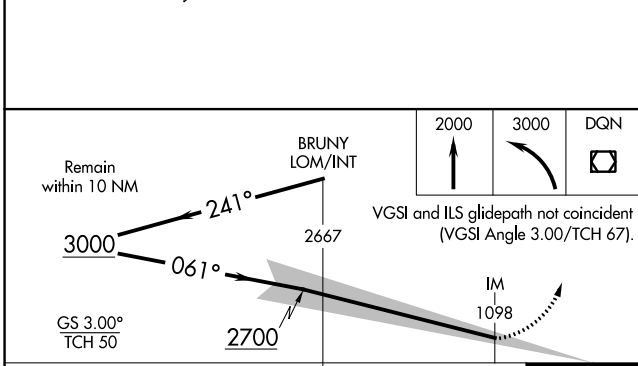
MISSED APPROACH: Climb to 2000 then climbing left turn to 3000 direct DQN VOR/DME and hold.

ATIS <b>125.8</b>	COLUMBUS APP CON <b>134.45 323.15</b>	DAYTON TOWER <b>119.9 257.7</b>	GND CON <b>121.9</b>	CINC DEL <b>121.75</b>
----------------------	--	------------------------------------	-------------------------	---------------------------

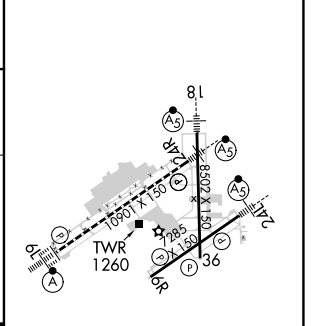


EC-2, 28 NOV 2024 to 26 DEC 2024

EC-2, 28 NOV 2024 to 26 DEC 2024



ELEV 1009	<b>D</b>	TDZE 998
-----------	----------	----------



CATEGORY	A	B	C	D
S-ILS 6L	CAT II RA 99/12		100 DA 1098	
S-ILS 6L	CAT III		RVR 06	

**CATEGORY II & III ILS - SPECIAL AIRCREW & AIRCRAFT CERTIFICATION REQUIRED**

HIRL all Rwys  
 TDZ/CL Rwy 6L  
 REIL Rwys 6R and 36