

LOC I-ATD <b>108.9</b>	APP CRS <b>061°</b>	Rwy Idg <b>10900</b> TDZE <b>998</b> Apt Elev <b>1009</b>
---------------------------	------------------------	---

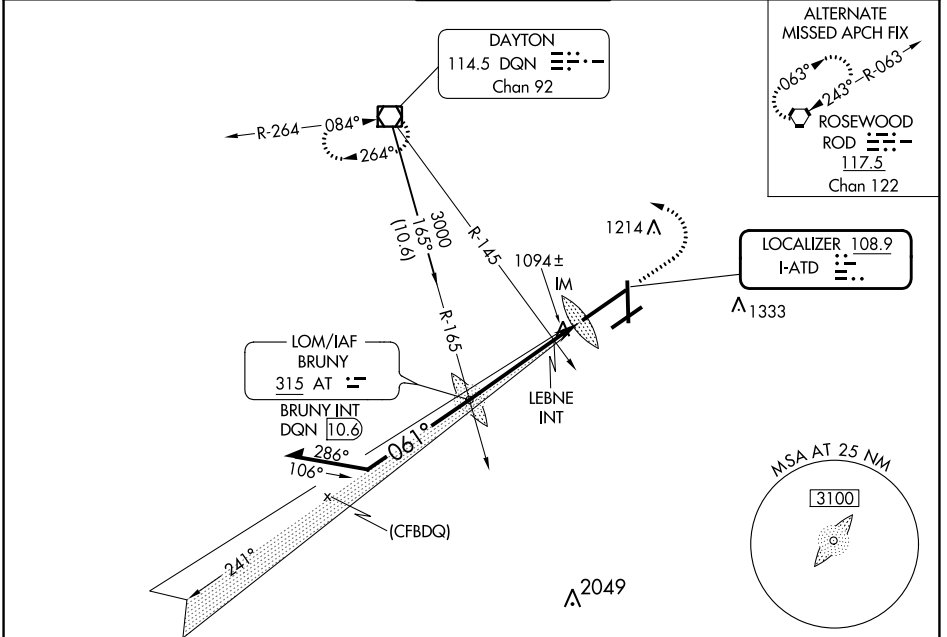
# ILS or LOC RWY 6L

JAMES M COX DAYTON INTL (DAY)

**Simultaneous approach authorized.**  
 For inop ALSF-2, increase S-LOC 6L Cat C/D visibility to 1½ mile.

**ALSF-2**  
**MISSED APPROACH:** Climb to 2000 then climbing left turn to 3000 direct DQN VOR/DME and hold.

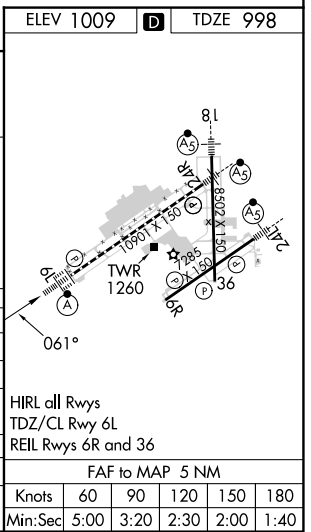
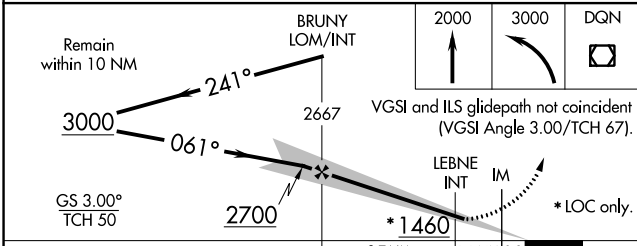
ATIS <b>125.8</b>	COLUMBUS APP CON <b>134.45 323.15</b>	DAYTON TOWER <b>119.9 257.7</b>	GND CON <b>121.9</b>	CINC DEL <b>121.75</b>
----------------------	--	------------------------------------	-------------------------	---------------------------



EC-2, 28 NOV 2024 to 26 DEC 2024

EC-2, 28 NOV 2024 to 26 DEC 2024

ELEV 1009	<b>D</b>	TDZE 998
-----------	----------	----------



CATEGORY	LEBNE FIX MINIMUMS (DUAL VOR RECEIVERS REQUIRED)			
	A	B	C	D
S-ILS 6L	1198/18 200 (200-½)			
S-LOC 6L	1460/24	462 (500-½)	1460/50	462 (500-1)
<b>C</b> CIRCLING	1580-1	571 (600-1)	1580-1½	1640-2
			571 (600-1½)	631 (700-2)
S-LOC 6L	1380/24	382 (400-½)	1380/35	382 (400-¾)
<b>C</b> CIRCLING	1580-1	571 (600-1)	1580-1½	1640-2
			571 (600-1½)	631 (700-2)

FAF to MAP 5 NM					
Knots	60	90	120	150	180
Min:Sec	5:00	3:20	2:30	2:00	1:40