

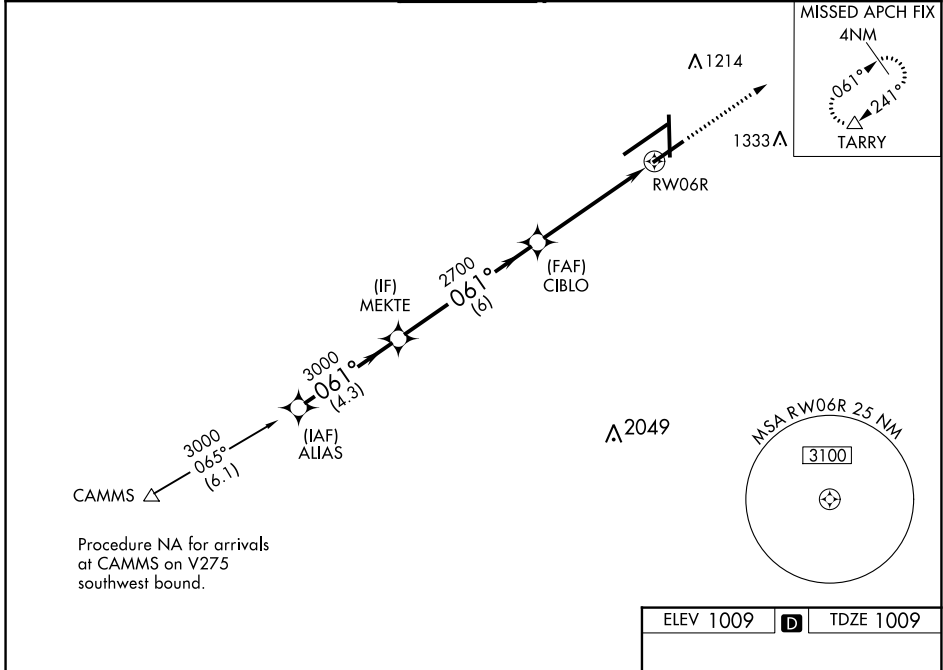
WAAS CH 90414 W06B	APP CRS 061°	Rwy Idg TDZE Apt Elev	7001 1009 1009
--	------------------------	-----------------------------	---

RNAV (GPS) RWY 6R

JAMES M COX DAYTON INTL (DAY)

RNP APCH - GPS.	<p>▼ For uncompensated Baro-VNAV systems, LNAV/VNAV NA below -19°C or above 54°C. Rwy 6R helicopter visibility reduction below 3/4 SM NA. Simultaneous approach authorized. LNAV procedure NA during simultaneous operations. Use of FD or AP required during simultaneous operations.</p>	MISSED APPROACH: Climb to 3000 direct TARRY and hold.
-----------------	--	---

ATIS 125.8	COLUMBUS APP CON 134.45 323.15	DAYTON TOWER 119.9 257.7	GND CON 121.9	CLNC DEL 121.75
----------------------	--	------------------------------------	-------------------------	---------------------------

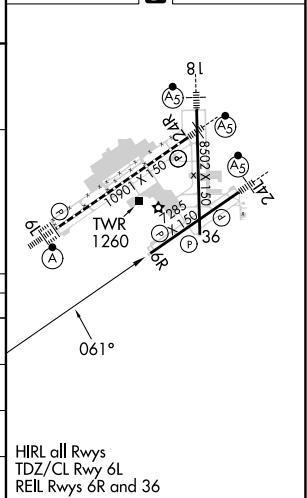


Procedure NA for arrivals at CAMMS on V275 southwest bound.

ELEV 1009	D	TDZE 1009
-----------	----------	-----------

VGSI and RNAV glidepath not coincident (VGSI Angle 3.00/TCH 50).

	ALIAS	MEKTE	CIBLO	RWY 6R
Altitude	3000	3000	2700	1520-13/4
Distance	4.3 NM	6 NM	3.6 NM	1.5 NM
Category	A	B	C	D
LPV DA		1259-3/4	250 (300-3/4)	
LNAV/VNAV DA		1496-13/4	487 (500-13/4)	
LNAV MDA	1520-1	511 (600-1)	1520-1 1/2 511 (600-1 1/2)	1520-1 3/4 511 (600-1 3/4)
CIRCLING	1580-1	571 (600-1)	1580-1 1/2 571 (600-1 1/2)	1640-2 631 (700-2)



EC-2, 28 NOV 2024 to 26 DEC 2024

EC-2, 28 NOV 2024 to 26 DEC 2024