

APP CRS	Rwy Idg	<b>10900</b>
<b>061°</b>	TDZE	<b>998</b>
	Apt Elev	<b>1009</b>

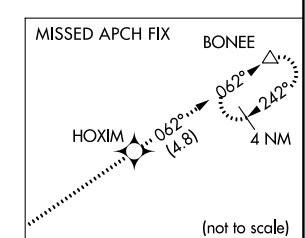
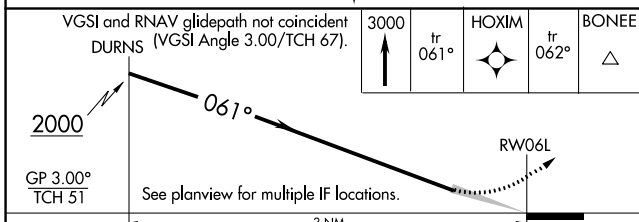
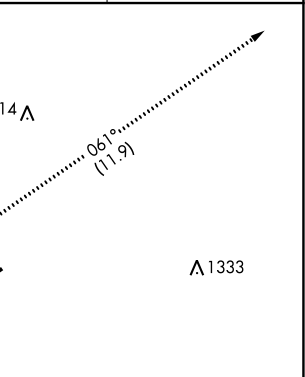
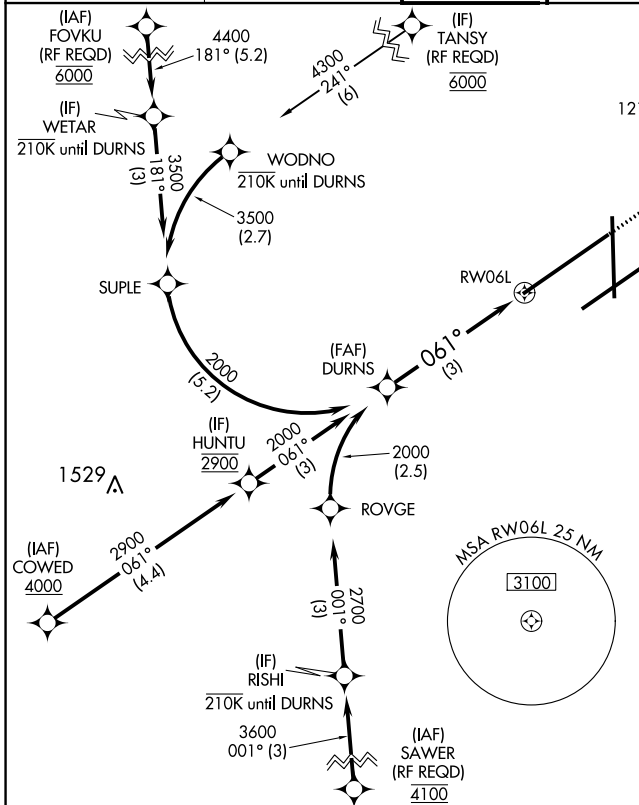
# RNAV (RNP) Y RWY 6L

JAMES M COX DAYTON INTL (DAY)

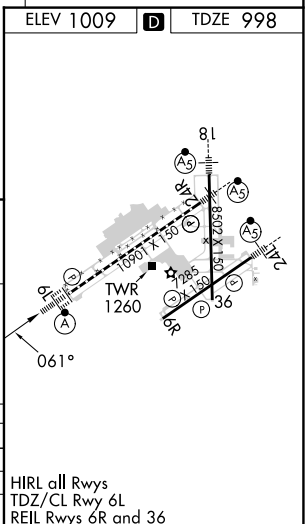
**▼** GPS required. For uncompensated Baro-VNAV systems, procedure NA below -19°C (-2°F) or above 54°C (130°F). For inop ALS, increase RNP 0.10 all Cats visibility to RVR 6000. For inop ALS, increase RNP 0.30 all Cats visibility to 1 ½.

ALSF-2 MISSED APPROACH: Climb to 3000 on the RNAV missed approach route to BONEE and hold.

ATIS <b>125.8</b>	COLUMBUS APP CON <b>134.45 323.15</b>	DAYTON TOWER <b>119.9 257.7</b>	GND CON <b>121.9</b>	CLNC DEL <b>121.75</b>
----------------------	--	------------------------------------	-------------------------	---------------------------



CATEGORY	A	B	C	D
RNP 0.10 DA		1358/40	360 (400-¾)	
RNP 0.30 DA		1464/60	466 (500-1½)	



## AUTHORIZATION REQUIRED

EC-2, 28 NOV 2024 to 26 DEC 2024

EC-2, 28 NOV 2024 to 26 DEC 2024