


LOC I-DAB 109.7	APP CRS 070°	Rwy Idg TDZE Apt Elev	9810 30 34
---------------------------	------------------------	-----------------------------	---------------------------------------

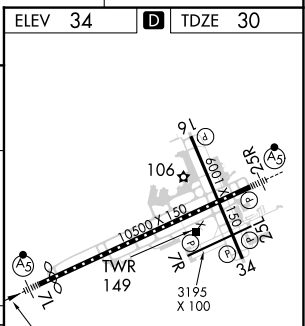
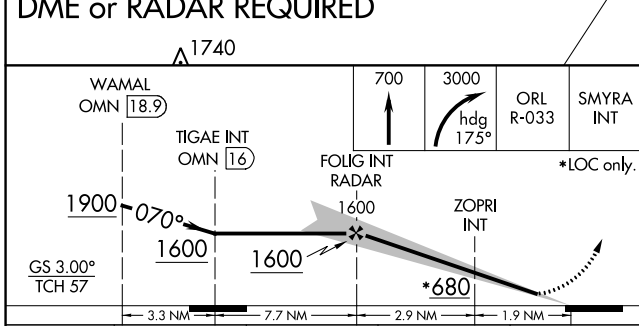
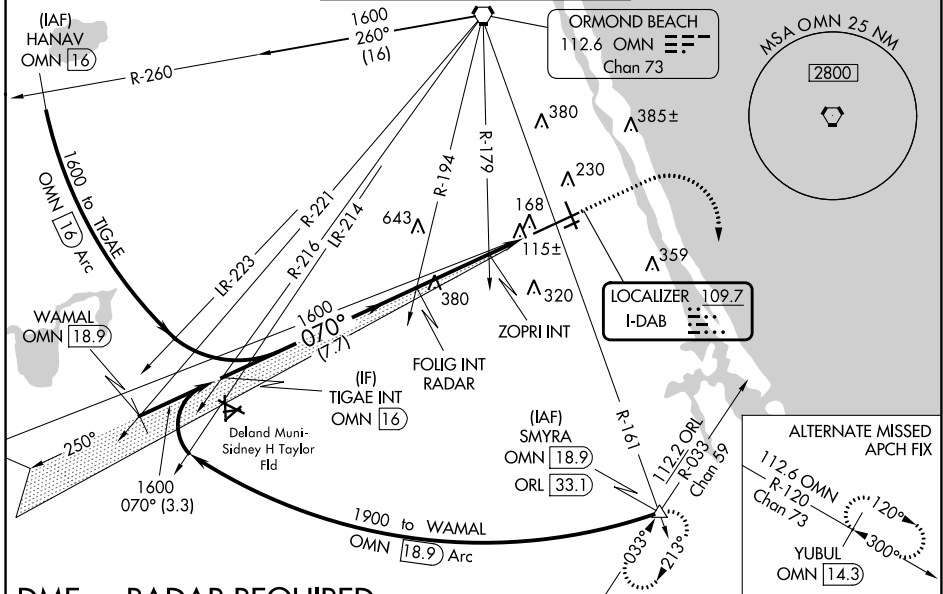
ILS or LOC RWY 7L

DAYTONA BEACH INTL (DAB)

⚠ Inoperative table does not apply to S-ILS 07L. Helicopter visibility reduction below RVR 4000 NA. For inop MALSR, increase S-LOC 07L Cat A and B and ZOPRI fix minimums S-LOC 07L all Cats visibility to RVR 5500. Autopilot coupled approach NA below 535.

MALSR

MISSED APPROACH: Climb to 700 then climbing right turn to 3000 on heading 175° and ORL VORTAC R-033 to SMYRA/ORL 33.1 DME and hold.

ATIS 132.875	DAYTONA APP CON 125.8 269.075	DAYTONA TOWER 120.7 257.8	GND CON 121.9 348.6	CLNC DEL 119.3
------------------------	---	-------------------------------------	-------------------------------	--------------------------



CATEGORY	A	B	C	D
S-ILS 07L		230/40	200 (200-¾)	
S-LOC 07L	680-40	650 (700-¾)	680-1⅞	650 (700-1⅞)
C CIRCLING	680-1	646 (700-1)	646 (700-1⅞)	666 (700-2)
ZOPRI FIX MINIMUMS (DUAL VOR RECEIVERS REQUIRED)				
S-LOC 07L		380/40	350 (400-¾)	
C CIRCLING	540-1	506 (600-1)	680-1¼	700-2
			646 (700-1¼)	666 (700-2)

ELEV 34	D TDZE 30
TDZ/CL Rwy 7L HIRL Rwy 7L-25R MIRL Rwy 7R-25L and 16-34 REIL Rwy 7R, 16, 25L and 34	
FAF to MAP 4.8 NM	
Knots	60 90 120 150 180
Min:Sec	4:48 3:12 2:24 1:55 1:36

SE-3, 28 NOV 2024 to 26 DEC 2024

SE-3, 28 NOV 2024 to 26 DEC 2024