

APP CRS	Rwy Idg	<b>3195</b>
<b>250°</b>	TDZE	<b>33</b>
	Apt Elev	<b>34</b>

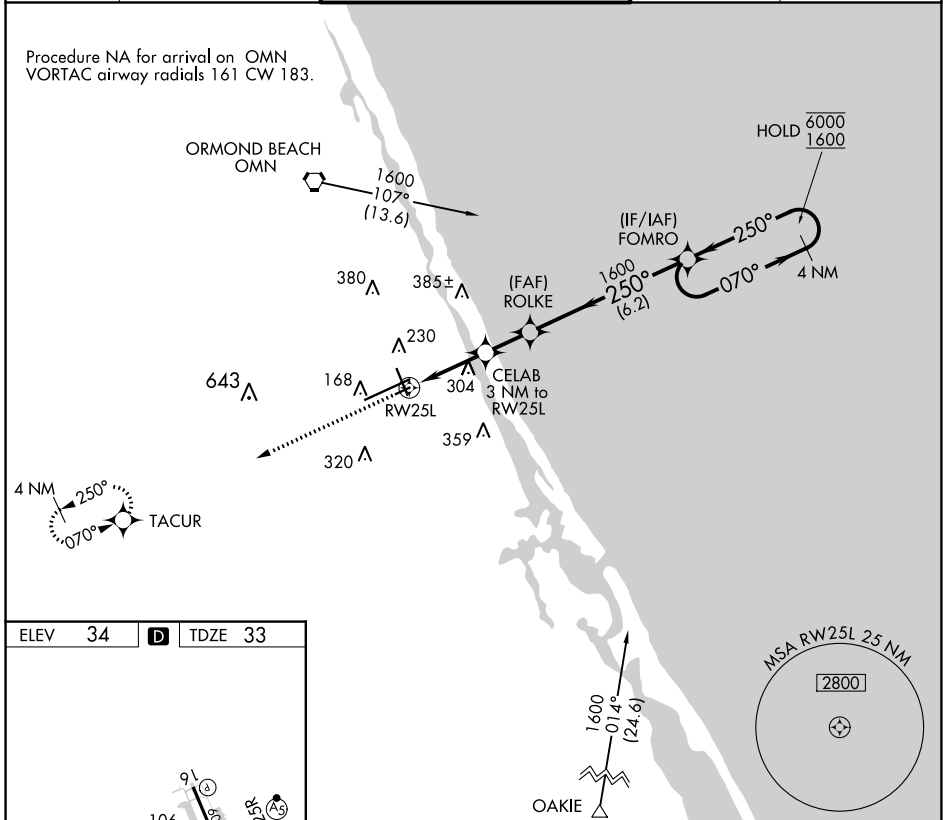
# RNAV (GPS) RWY 25L

DAYTONA BEACH INTL (DAB)

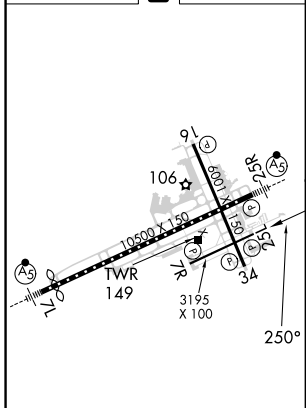
RNP APCH-GPS.		MISSED APPROACH: Climb to 1700 direct TACUR and hold.	
<p><b>▼</b> Rwy 25L helicopter visibility reduction below <math>\frac{3}{4}</math> SM NA.</p>			

ATIS	DAYTONA APP CON	DAYTONA TOWER	GND CON	CLNC DEL
<b>132.875</b>	<b>125.8 269.075</b>	<b>120.7 257.8</b>	<b>121.9 348.6</b>	<b>119.3</b>

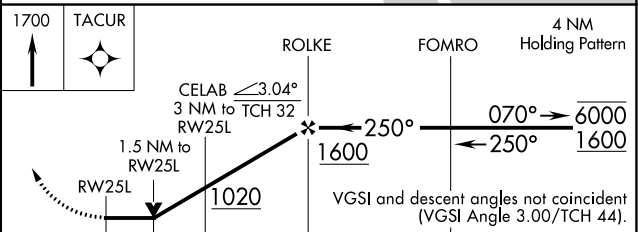
Procedure NA for arrival on OMN  
VORTAC airway radials 161 CW 183.



ELEV	<b>34</b>	<b>D</b>	TDZE	<b>33</b>
------	-----------	----------	------	-----------



TDZ/CL Rwy 7L  
HIRL Rwy 7L-25R  
REIL Rwy 7R, 16, 25L and 34  
MIRL Rwy 7R-25L and 16-34



CATEGORY	A	B	C	D
LNAV MDA	560-1	527 (600-1)	560-1½ 527 (600-1½)	NA