


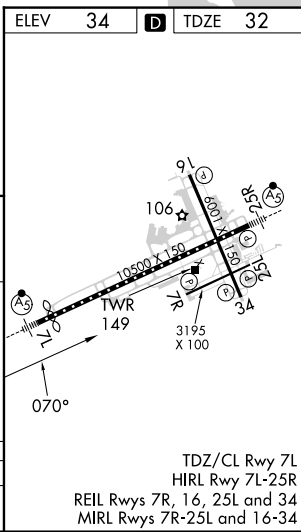
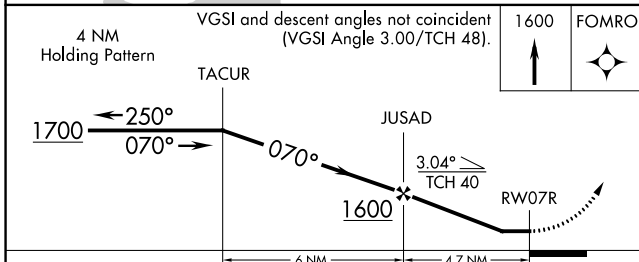
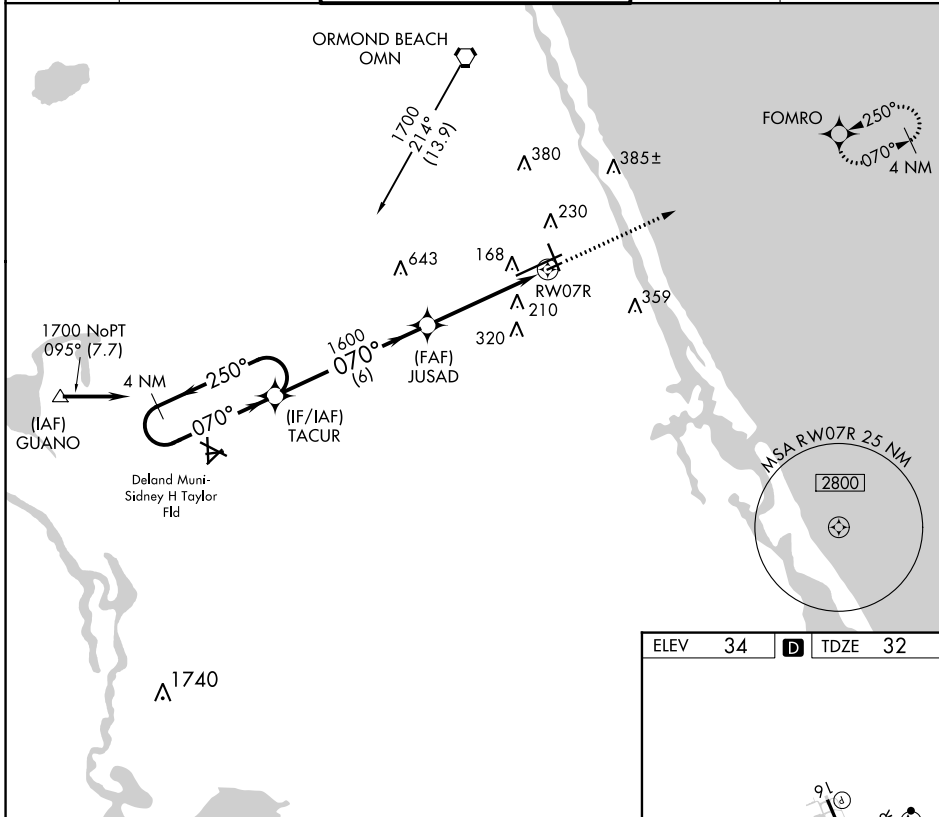
APP CRS	Rwy Idg	3195
070°	TDZE	32
	Apt Elev	34

RNAV (GPS) RWY 7R

DAYTONA BEACH INTL (DAB)

RNP APCH.		MISSED APPROACH: Climb to 1600 direct FOMRO WP and hold.
 Rwy 7R helicopter visibility reduction below 3/4 SM NA.		

ATIS 132.875	DAYTONA APP CON 125.8 269.075	DAYTONA TOWER 120.7 257.8	GND CON 121.9 348.6	CLNC DEL 119.3
------------------------	---	-------------------------------------	-------------------------------	--------------------------



SE-3, 28 NOV 2024 to 26 DEC 2024

SE-3, 28 NOV 2024 to 26 DEC 2024