

DEL RIO, TEXAS

# HI-ILS or LOC/DME Z RWY 13C

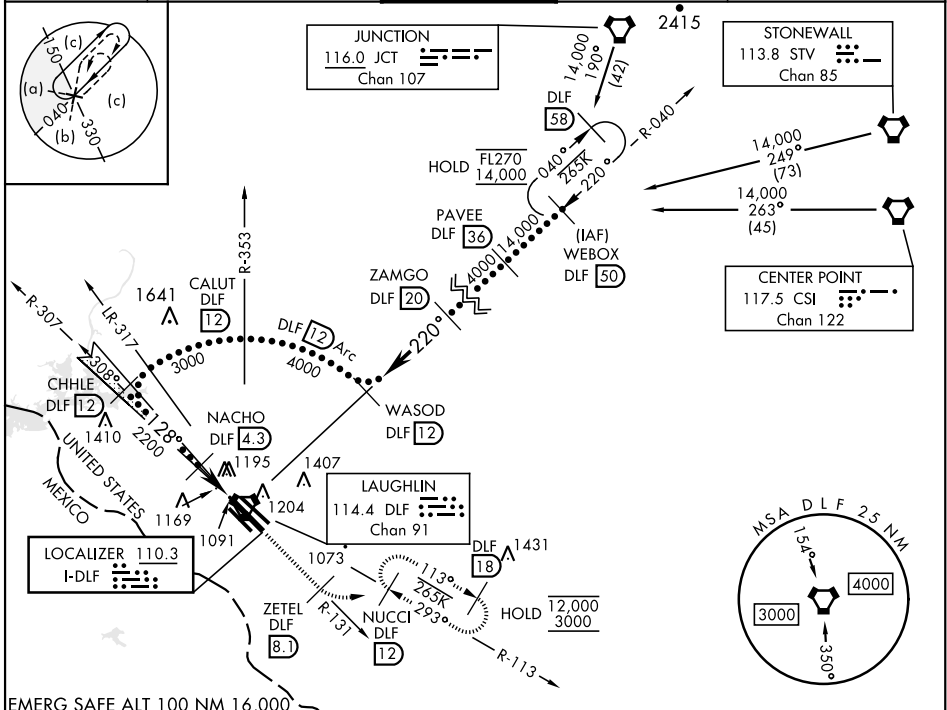
LOC I-DFL <b>110.3</b>	APCH CRS <b>128°</b>	Rwy Idg TDZE Arprt Elev <b>8852 8316 6571</b> <b>1082 1078 1077</b> <b>1082</b>
---------------------------	-------------------------	--

[USAF] LAUGHLIN AFB (KDLF)

\* When ALS inop, increase RVR to 40 and vis to ¼ mile.  
 \*\* When ALS inop, increase CAT AB RVR to 55 and vis to 1 mile, CAT CDE RVR to 50 and vis to 1 mile.  
 \*\*\* Circling W of Rwy 13R-31L not authorized.

MISSED APPROACH: Climb to 3000 on DLF VORTAC R-131 to 8.1 DME (ZETEL), then turn left to intercept DLF R-113 to 12 DME (NUCCI) and hold.

ATIS * <b>114.4 269.9</b>	DEL RIO APP CON <b>119.6 259.1</b>	TOWER * <b>125.2 307.375</b>	GND CON <b>275.8</b>	CLNC DEL <b>120.5 335.8</b>
------------------------------	---------------------------------------	---------------------------------	-------------------------	--------------------------------



EMERG SAFE ALT 100 NM 16,000	CHHLE DLF 12	NACHO DLF 4.3	COTLU DLF 1.4	ELEV 1082	TDZE 13C 1082	TDZE 13L 1078	TDZE 13R 1077
GS 3.00° TCH 38	3000	2200	0.5	DLF R-131	ZETEL DLF 8.1	NUCCI R-113 DLF 12	Rwy 31L Idg 6241'

CATEGORY	A	B	C	D	E
S-ILS 13C *	1282/24		200	(200-½)	
S-LOC 13C **	1420/24	338 (400-½)	1420/26	338	(400-½)
SIDESTEP 13L	1440-1	362 (400-1)	1440-1½ 362 (400-1½)	1440-2	362 (400-2)
SIDESTEP 13R	1480-1	403 (400-1)	1480-1½ 403 (400-1½)	1480-2	403 (400-2)
CIRCLING ***	1500-1 418 (500-1)	1540-1 458 (500-1)	1700-1¾ 618(700-1¾)	1700-2 618 (700-2)	1740-2¼ 658(700-2¼)

MIRL Rwy 13R-31L  
 HIRL Rwy 13C-31C, 13L-31R

DEL RIO, TEXAS  
Amdt 6 07SEP23

29°22'N-100°47'W

LAUGHLIN AFB (KDLF)

# HI-ILS or LOC/DME Z RWY 13C

SC-3, 28 NOV 2024 to 26 DEC 2024

SC-3, 28 NOV 2024 to 26 DEC 2024