

(CEZ2.CEZ) 23334

# CORTEZ TWO DEPARTURE

AL-112 (FAA)

CORTEZ MUNI (CEZ)  
CORTEZ, COLORADO

DENVER CENTER  
118.575 348.7

CONES  
116.95 ETL  
Chan 116(Y)

BLUE MESA  
114.9 HBU  
Chan 96

CORTEZ  
114.35 CEZ  
Chan 90(Y)

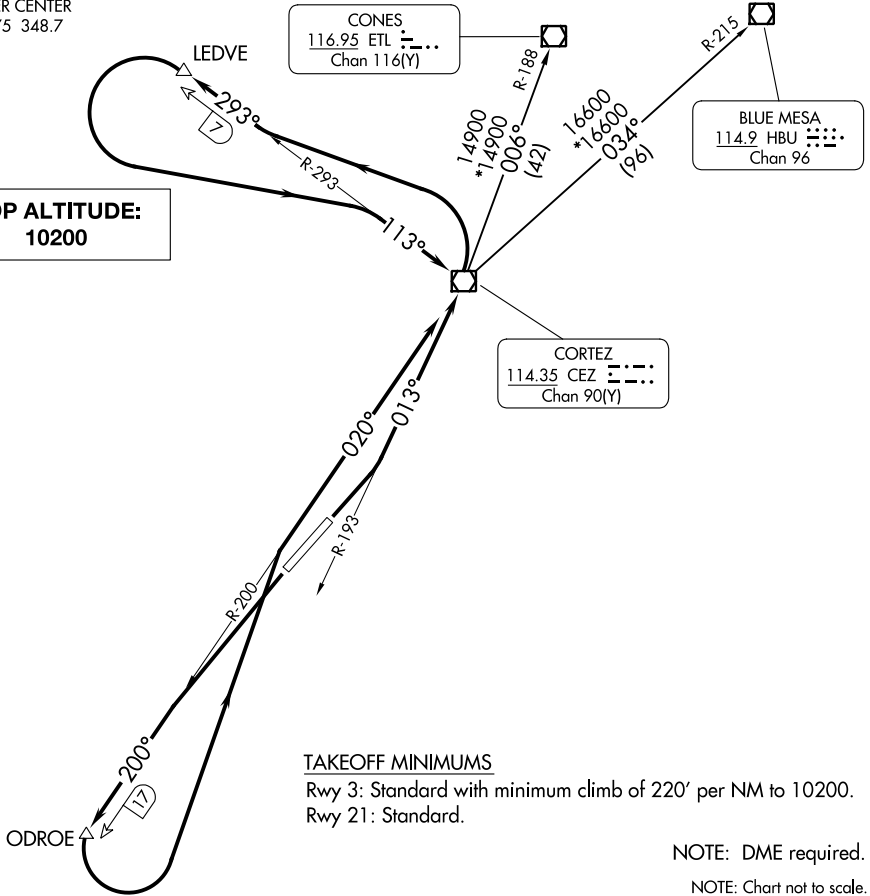
**TOP ALTITUDE:  
10200**

### TAKEOFF MINIMUMS

Rwy 3: Standard with minimum climb of 220' per NM to 10200.  
Rwy 21: Standard.

NOTE: DME required.

NOTE: Chart not to scale.



### DEPARTURE ROUTE DESCRIPTION

**TAKEOFF RUNWAY 3:** Climbing left turn to 7100 on CEZ R-193 to CEZ VOR/DME. Continue climbing left turn to 8600 on CEZ R-293 to LEDVE/CEZ 7 DME, then climbing left turn to 10200 on CEZ R-293 to CEZ VOR/DME. Cross CEZ VOR/DME at or above 10200 for route of flight. Thence. . . .

**TAKEOFF RUNWAY 21:** Climbing left turn to 7900 on CEZ R-200 to ODROE/CEZ 17 DME, then climbing left turn to 10200 on CEZ R-200 to CEZ VOR/DME. Cross CEZ VOR/DME at or above 10200 for route of flight. Thence. . . .

. . . .via (transition) or (assigned route).

**BLUE MESA TRANSITION (CEZ2.HBU):** From over CEZ VOR/DME on CEZ R-034 and HBU R-215 to HBU VOR/DME.

**CONES TRANSITION (CEZ2.ETL):** From over CEZ VOR/DME on CEZ R-006 and ETL R-188 to ETL VOR/DME.

# CORTEZ TWO DEPARTURE

(CEZ2.CEZ) 21JUL16

CORTEZ, COLORADO  
CORTEZ MUNI (CEZ)

SW-1, 28 NOV 2024 to 26 DEC 2024

SW-1, 28 NOV 2024 to 26 DEC 2024