

(ZETTR4.ZETTR) 24137

ZETTR FOUR DEPARTURE (RNAV)

AL-118 (FAA)

COLEMAN A YOUNG MUNI (DET)

DETROIT, MICHIGAN

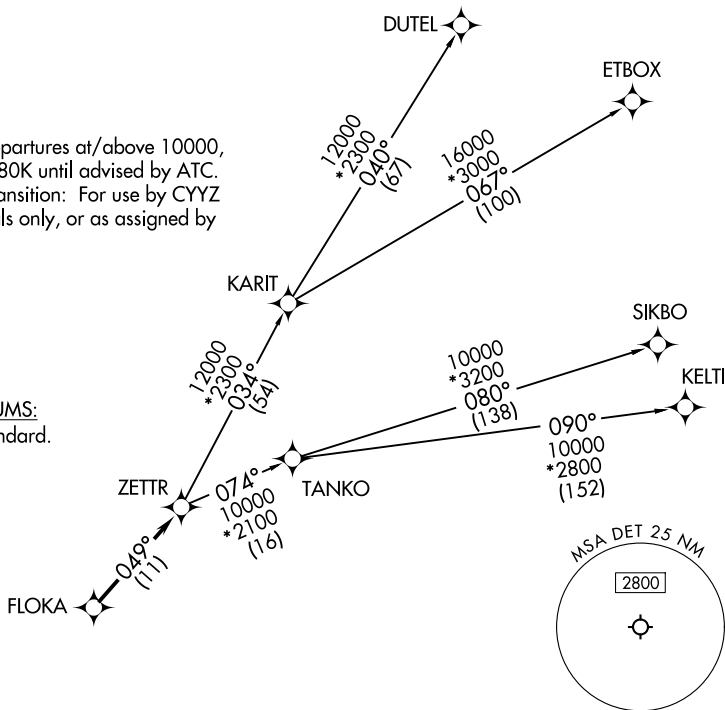
DETROIT DEP CON
134.3 284.0
ATIS
124.875
GND CON
121.85
DETROIT CITY TOWER
121.3 257.8

RNAV 1 - DME/DME/IRU or GPS.
RADAR required.

**TOP ALTITUDE:
ASSIGNED BY ATC**

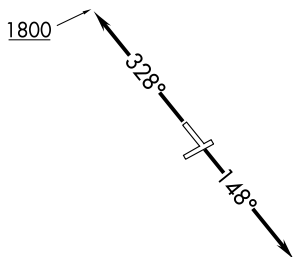
NOTE: Turbojet departures at/above 10000, maintain 280K until advised by ATC.
NOTE: TANKO Transition: For use by CYYZ area arrivals only, or as assigned by ATC.

TAKEOFF MINIMUMS:
Rwys 15, 33: Standard.



EC-1, 28 NOV 2024 to 26 DEC 2024

EC-1, 28 NOV 2024 to 26 DEC 2024



DEPARTURE ROUTE DESCRIPTION

TAKEOFF RUNWAY 15: Climb on heading 148° or as assigned by ATC, thence....

TAKEOFF RUNWAY 33: Climb on heading 328° to 1800 then as assigned by ATC, thence....

...for RADAR vectors to FLOKA, then on track 049° to ZETTR, then on (transition). Maintain ATC assigned altitude, expect filed altitude 10 minutes after departure.

- DUTEL TRANSITION (ZETTR4.DUTEL):
- ETBOX TRANSITION (ZETTR4.ETBOX):
- KELTI TRANSITION (ZETTR4.KELTI):
- SIKBO TRANSITION (ZETTR4.SIKBO):
- TANKO TRANSITION (ZETTR4.TANKO):

NOTE: Chart not to scale.

ZETTR FOUR DEPARTURE (RNAV)

(ZETTR4.ZETTR) 16MAY24

DETROIT, MICHIGAN
COLEMAN A YOUNG MUNI (DET)