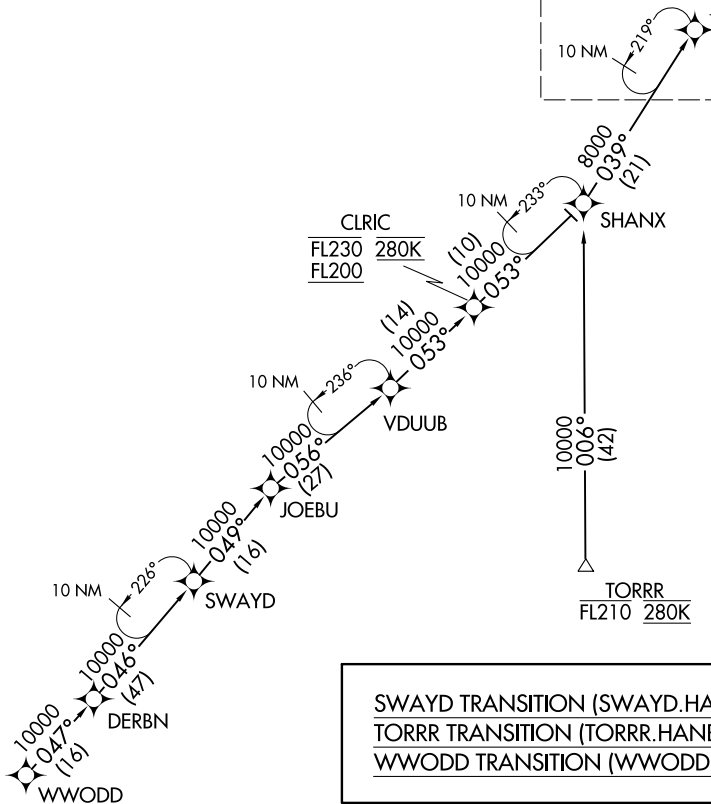


HANBL THREE ARRIVAL (RNAV) Transition Routes

D-ATIS
133.675
DETROIT APP CON
124.975 284.0

See following page
for arrival routes

HANBL
FL210 280K
17000



SWAYD TRANSITION (SWAYD.HANBL3)
TORRR TRANSITION (TORRR.HANBL3)
WWODD TRANSITION (WWODD.HANBL3)

- NOTE: RADAR required.
- NOTE: RNAV 1.
- NOTE: DME/DME/IRU or GPS required.
- NOTE: Use Runway 22R transition or as assigned by ATC. Expect runway assignment from Detroit APP CON no later than 10 NM from HEMIE.
- NOTE: For use when DTW landing south or west. When DTW landing north, file and expect the LECTR RNAV STAR.
- NOTE: TORRR Transition for use by CVG/DAY/SDF/LEX terminal area departures at or below FL210 only and ATC use as assigned.

(NARRATIVE ON FOLLOWING PAGE)
(CONTINUED ON FOLLOWING PAGE)

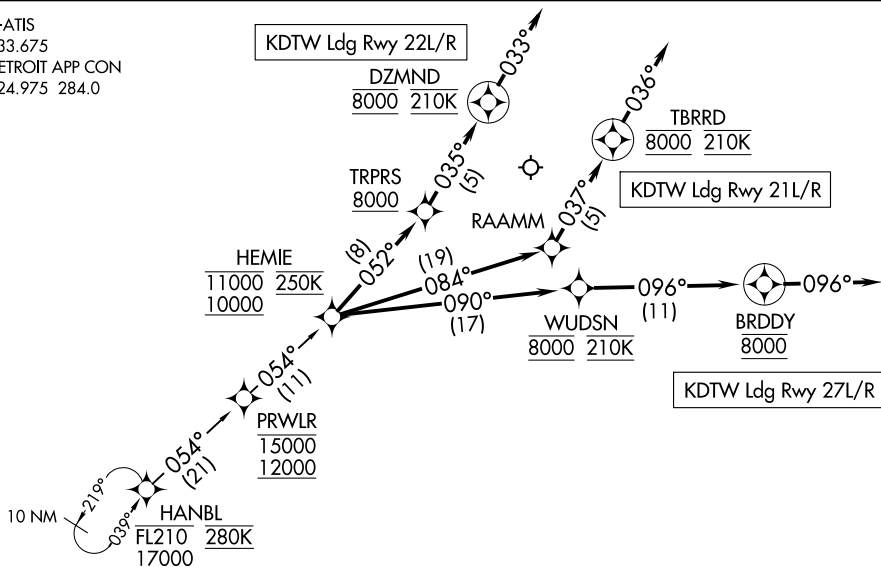
NOTE: Chart not to scale.

EC-1, 28 NOV 2024 to 26 DEC 2024

EC-1, 28 NOV 2024 to 26 DEC 2024

HANBL THREE ARRIVAL (RNAV) Arrival Routes

D-ATIS
133.675
DETROIT APP CON
124.975 284.0



- NOTE: RADAR required.
- NOTE: RNAV 1.
- NOTE: DME/DME/IRU or GPS required.
- NOTE: Use Runway 22R transition or as assigned by ATC. Expect runway assignment from Detroit APP CON no later than 10 NM from HEMIE.
- NOTE: For use when DTW landing south or west. When DTW landing north, file and expect the LECTR RNAV STAR.
- NOTE: TORRR Transition for use by CVG/DAY/SDF/LEX terminal area departures at or below FL210 only and ATC use as assigned.

NOTE: Chart not to scale.

ARRIVAL ROUTE DESCRIPTION

From HANBL on track 054° to cross PRWL between 12000 and 15000, then on track 054° to cross HEMIE between 10000 and 11000 and at 250K.

LANDING RUNWAY 21L/R: From HEMIE on track 084° to RAAMM, then on track 037° to cross TBRRD at 8000 and at 210K, then on track 036°. Expect RADAR vectors to final approach course.

LANDING RUNWAY 22L/R: From HEMIE on track 052° to cross TRPRS at or above 8000, then on track 035° to cross DZMND at 8000 and at 210K, then on track 033°. Expect RADAR vectors to final approach course.

LANDING RUNWAY 27L/R: From HEMIE on track 090° to cross WUDSN at 8000 and at 210K, then on track 096° to cross BRDDY at 8000, then on track 096°. Expect RADAR vectors to final approach course.