

|   |                        |   |
|---|------------------------|---|
| LOC/DME I-DWC<br><b>110.7</b><br>Chan <b>44</b> | APP CRS<br><b>216°</b> | Rwy ldg<br>TDZE<br>Apt Elev<br><b>12003</b><br><b>637</b><br><b>645</b> |
|---|------------------------|---|

## ILS RWY 22L (SA CAT I)

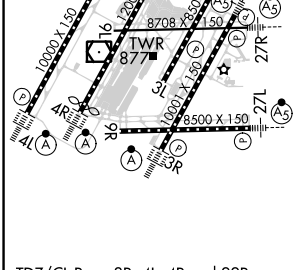
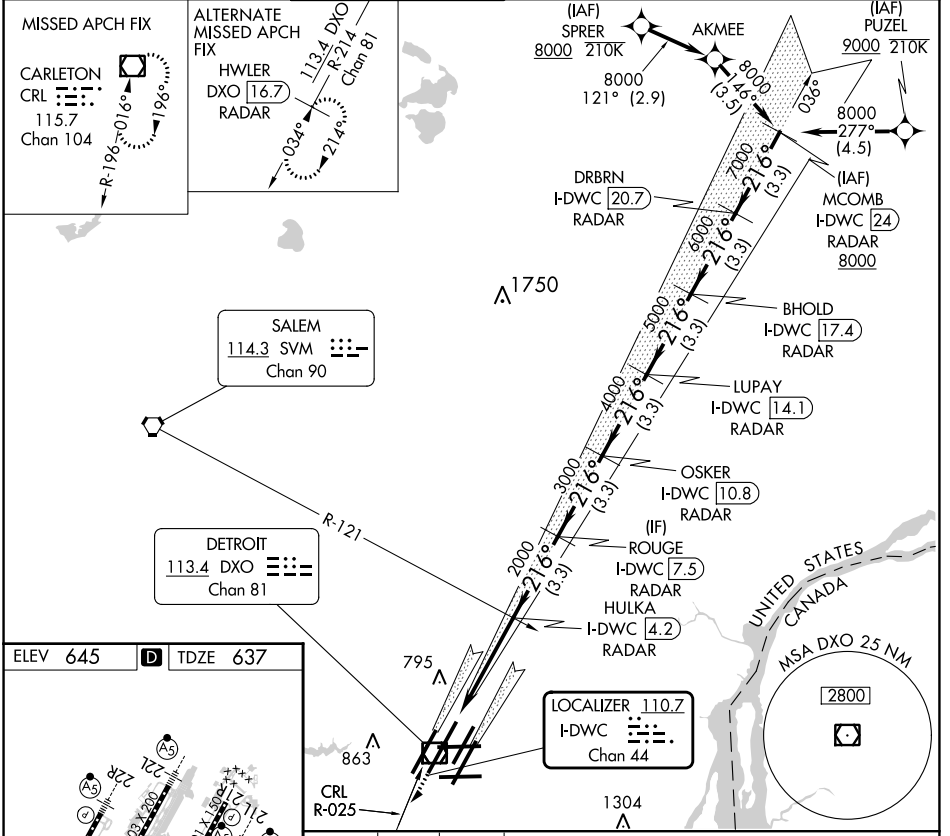
DETROIT METRO WAYNE COUNTY (DTW)

DME or RADAR required. RNAV 1-DME/DME/IRU or RADAR required for procedure entry.

Simultaneous approach authorized.  
Requires specific OPSPEC, MSPEC, or LOA approval and use of HUD to DH.

MALS R (AS) MISSED APPROACH: Climb to 4000 on heading 216° and CRL VOR/DME R-025 to CRL VOR/DME and hold, continue climb-in-hold to 4000.

|                          |  |                                       |   |  |                           |       |
|--------------------------|--|---------------------------------------|---|--|---------------------------|-------|
| D-ATIS<br><b>133.675</b> | DETROIT APP CON<br><b>124.05 284.0</b> | METRO TOWER<br><b>128.125 317.725</b> | GND CON<br><b>121.8 (NW)</b><br><b>132.725 (SW)</b> | <b>119.45 (NE)</b><br><b>119.25 (SE)</b> | CLNC DEL<br><b>120.65</b> | CPDLC |
|--------------------------|--|---------------------------------------|---|--|---------------------------|-------|



|               |          |                 |  |                  |  |                  |  |                  |  |                  |  |                 |  |
|---------------|----------|-----------------|--|------------------|--|------------------|--|------------------|--|------------------|--|-----------------|--|
| ELEV 645      | TDZE 637 | CRL R-025       |  | OSKER I-DWC 10.8 |  | LUPAY I-DWC 14.1 |  | BHOLD I-DWC 17.4 |  | DRBRN I-DWC 20.7 |  | MCOMB I-DWC 24  |  |
| 4000 hdg 216° |          | HULKA I-DWC 4.2 |  | ROUGE I-DWC 7.5  |  | LUPAY I-DWC 14.1 |  | BHOLD I-DWC 17.4 |  | DRBRN I-DWC 20.7 |  | MCOMB I-DWC 24  |  |
| 2000          |          | 3000            |  | 4000             |  | 5000             |  | 6000             |  | 7000             |  | GS 2.85° TCH 60 |  |
| 4.3 NM        |          | 3.3 NM          |  | 3.3 NM           |  | 3.3 NM           |  | 3.3 NM           |  | 3.3 NM           |  | 3.3 NM          |  |
| CATEGORY A    |          | CATEGORY B      |  | CATEGORY C       |  | CATEGORY D       |  | CATEGORY D       |  | CATEGORY D       |  | CATEGORY D      |  |
| S-ILS 22L     |          | SA CAT I        |  | RA 148/14        |  | 150 DA 787       |  | 150 DA 787       |  | 150 DA 787       |  | 150 DA 787      |  |

**SA CATEGORY I ILS- SPECIAL AIRCREW & AIRCRAFT CERTIFICATION REQUIRED**

EC-1, 28 NOV 2024 to 26 DEC 2024

EC-1, 28 NOV 2024 to 26 DEC 2024