

LOC/DME I-EJR 111.5 Chan 52	APP CRS 216°	Rwy Idg TDZE Apt Elev	10001 632 645
---	------------------------	-----------------------------	--

ILS or LOC RWY 21L

DETROIT METRO WAYNE COUNTY (DTW)

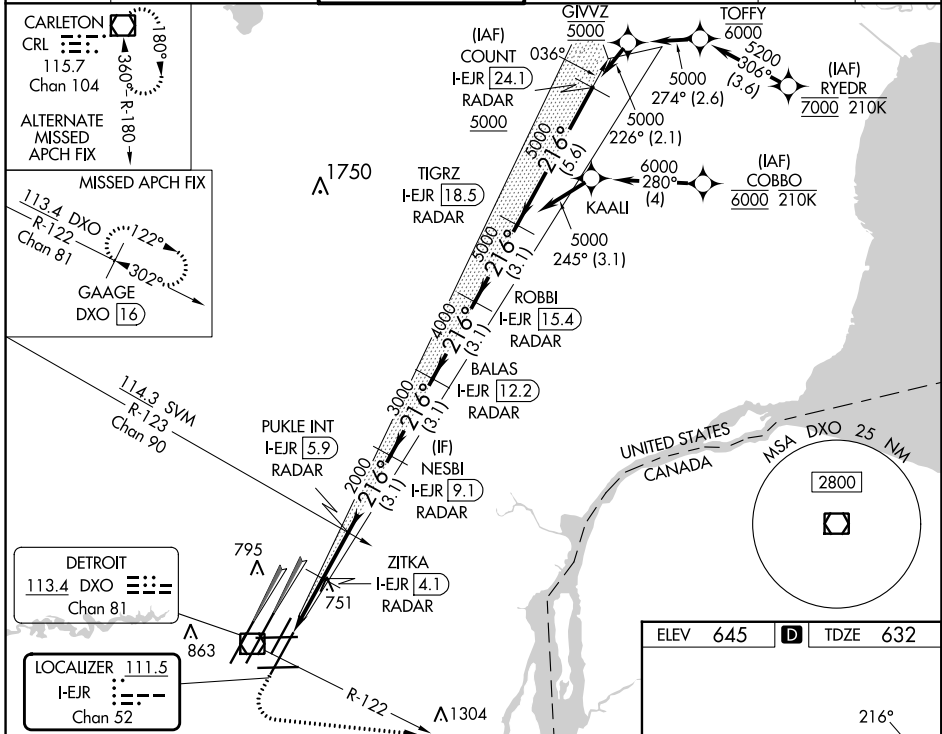
From RYEDR, COBBO: RNAV 1-DME/DME/IRU or GPS required. Aircraft not DME/DME/IRU or GPS equipped - RADAR required for procedure entry. DME or RADAR required.



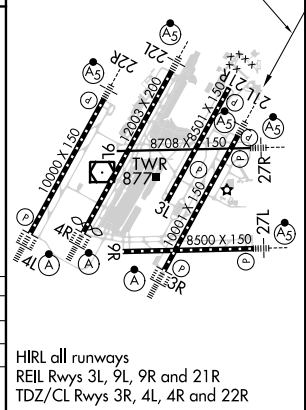
MISSED APPROACH: Climb to 1100 then climbing left turn to 4000 on DXO R-122 to GAAGE/DXO 16 DME and hold, continue climb-in-hold to 4000.

Simultaneous approach authorized.
**RVR 1800 authorized with use of FD or AP or HUD to DA.

D-ATIS 133.675	DETROIT APP CON 125.15 284.0	METRO TOWER 118.4 317.725	GND CON 121.8 (NW) 119.45 (NE) 132.725 (SW) 119.25 (SE)	CLNC DEL 120.65	CPDLC
--------------------------	--	-------------------------------------	---	---------------------------	-------



ELEV 645	TDZE 632
1100	4000
DXO R-122	GAAGE DXO 16
VGSI and ILS glidepath not coincident (VGSI Angle 3.00/TCH 80).	
*LOC only	
I-EJR 1.8	ZITKA I-EJR 4.1
I-EJR 2.8	PUKLE INT I-EJR 5.9
I-EJR 2.8	NESBI I-EJR 9.1
I-EJR 2.8	BALAS I-EJR 12.2
I-EJR 2.8	ROBBI I-EJR 15.4
I-EJR 2.8	TIGRZ I-EJR 18.5
216° 5000	
GS 3.00° TCH 55	
1 NM	1.3 NM
1.8 NM	3.1 NM
3.1 NM	3.1 NM
3.1 NM	3.1 NM
3.1 NM	3.1 NM
3.1 NM	3.1 NM
3.1 NM	3.1 NM
CATEGORY	A B C D
S-ILS 21L **	832/24 200 (200-½)
S-LOC 21L	1020/24 388 (400-½) 1020/35 388 (400-¾)
CIRCLING	1180-1 535 (600-1) 1180-1½ 535 (600-1½) 1240-2 595 (600-2)



HIRL all runways
REIL Rwy's 3L, 9L, 9R and 21R
TDZ/CL Rwy's 3R, 4L, 4R and 22R

EC-1, 28 NOV 2024 to 26 DEC 2024

EC-1, 28 NOV 2024 to 26 DEC 2024