

LOC/DME I-DWC 110.7 Chan 44	APP CRS 216°	Rwy Idg TDZE Apt Elev	12003 637 645
---	------------------------	-----------------------------	--

ILS or LOC RWY 22L

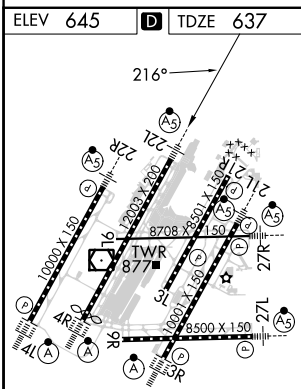
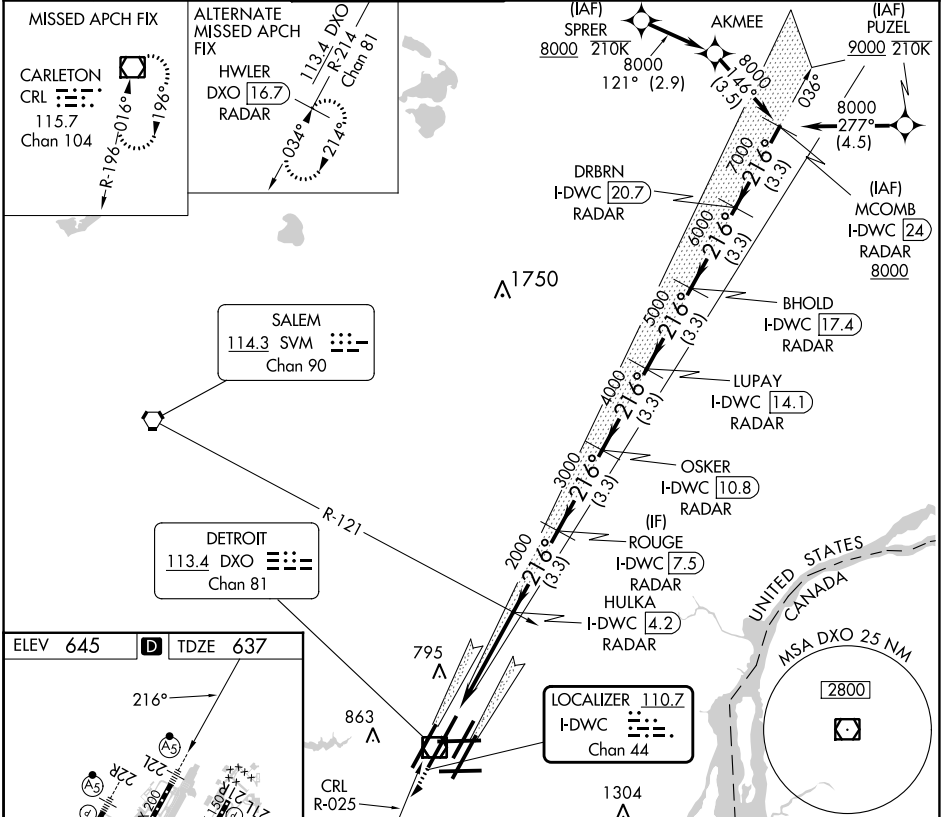
DETROIT METRO WAYNE COUNTY (DTW)

DME or RADAR required.
RNAV 1-DME/DME/IRU or RADAR required for procedure entry.

Simultaneous approach authorized.
#RVR 1800 authorized with use of FD or AP or HUD to DA.

MALSRS
MISSED APPROACH: Climb to 4000 on heading 216° and CRL VOR/DME R-025 to CRL VOR/DME and hold, continue climb-in-hold to 4000.

D-ATIS 133.675	DETROIT APP CON 124.05 284.0	METRO TOWER 128.125 317.725	GND CON 121.8 (NW) 132.725 (SW)	119.45 (NE) 119.25 (SE)	CLNC DEL 120.65	CPDLC
--------------------------	--	---------------------------------------	---	--	---------------------------	-------



ELEV 645	TDZE 637	* LOC only		BHOLD I-DWC (17.4) RADAR	DRBRN I-DWC (20.7) RADAR	MCOMB I-DWC (24) RADAR
4000	CRL R-025	CRL	OSKER I-DWC (10.8) RADAR	LUPAY I-DWC (14.1) RADAR	DRBRN I-DWC (20.7) RADAR	MCOMB I-DWC (24) RADAR
hdg 216°	I-DWC DME ANTENNA (0.2)	HULKA I-DWC (4.2) RADAR	ROUGE I-DWC (7.5) RADAR	OSKER I-DWC (10.8) RADAR	BHOLD I-DWC (17.4) RADAR	DRBRN I-DWC (20.7) RADAR
	*I-DWC (0.9)					

1 NM	3.3 NM	3.3 NM	3.3 NM	3.3 NM	3.3 NM	3.3 NM
CATEGORY	A	B	C	D		
S-ILS 22L #	837/24		200 (200-½)			
S-LOC 22L	1020/24	383 (400-½)	1020/35	383 (400-½)		
CIRCLING	1180-1	535 (600-1)	1180-1½	535 (600-1½)	1240-2	595 (600-2)

EC-1, 28 NOV 2024 to 26 DEC 2024

EC-1, 28 NOV 2024 to 26 DEC 2024