

DETROIT, MICHIGAN

AL-119 (FAA)

ILS PRM RWY 4R (CLOSE PARALLEL)

24249

LOC/DME I-DTW 110.7	APP CRS 036°	Rwy Idg 11494
Chan 44		TDZE 640
		Apt Elev 645

DETROIT METRO WAYNE COUNTY (DTW)

RNAV 1-GPS.

DME or RADAR required. CLEVR, CAATZ and ELDNN: RNAV 1-DME/DME/IRU or GPS required. Aircraft not DME/DME/IRU or GPS equipped- RADAR required for procedure entry.

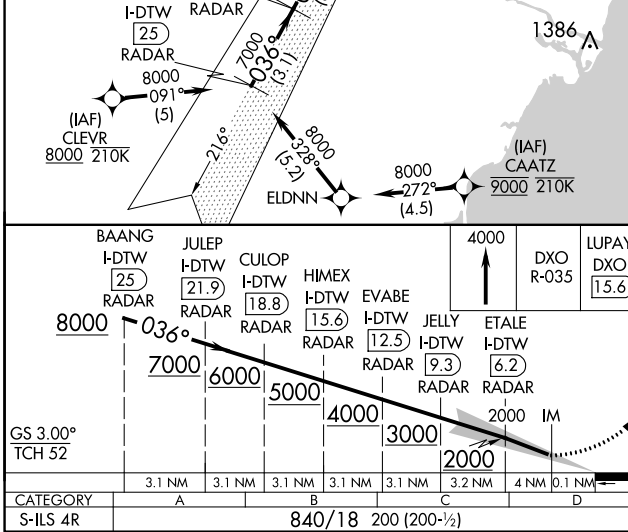
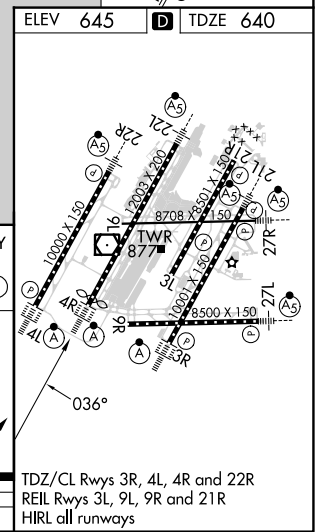
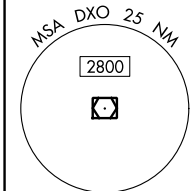
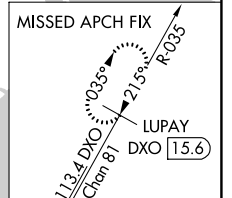
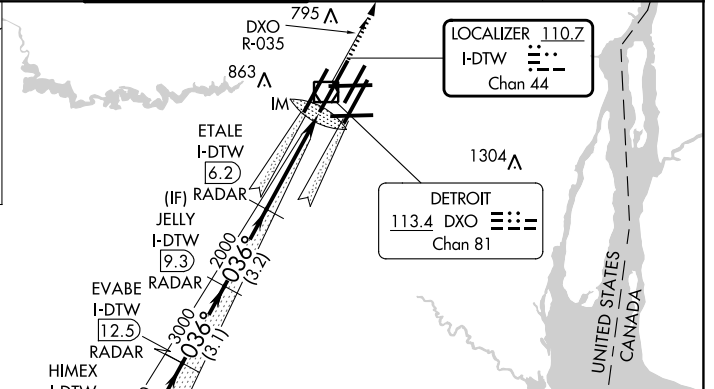
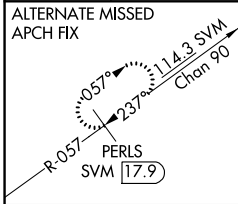
ALSF-2



MISSED APPROACH:
Climb to 4000 on DXO
VOR/DME R-035 to
LUPAY/DXO VOR/DME
15.6 DME and hold.

Simultaneous approach authorized. Use of FD or AP required during simultaneous operations. Dual VHF Comm required. See additional requirements on AAUP. Procedure NA when glideslope not available.

D-ATIS 133.675	DETROIT APP CON 124.05 284.0	METRO TOWER 128.125 317.725 PRM 135.775	GND CON 121.8 (NW) 119.45 (NE) 132.725 (SW) 119.25 (SE)	CLNC DEL 120.65	CPDLC
--------------------------	--	---	---	---------------------------	-------



DETROIT, MICHIGAN	42°13'N-83°21'W	DETROIT METRO WAYNE COUNTY (DTW)
Amdt 3A 13SEP18		ILS PRM RWY 4R (CLOSE PARALLEL)

EC-1, 28 NOV 2024 to 26 DEC 2024

EC-1, 28 NOV 2024 to 26 DEC 2024