

(CLOSE PARALLEL)

DETROIT METRO WAYNE COUNTY (DTW)

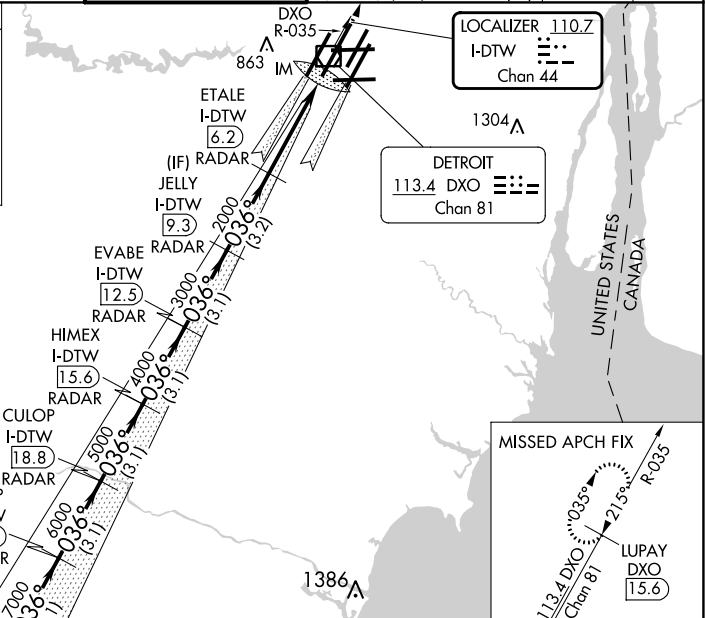
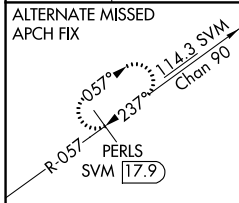
LOC/DME I-DTW <b>110.7</b>	APP CRS <b>036°</b>	Rwy Idg <b>11494</b>
Chan <b>44</b>		TDZE <b>640</b>
		Apt Elev <b>645</b>

RNAV 1-GPS, DME or RADAR required. CLEVR, CAATZ and ELDNN: RNAV 1-DME/DME/IRU or GPS required. Aircraft not DME/DME/IRU or GPS equipped- RADAR required for procedure entry.

ALSF-2 MISSED APPROACH:  
 Climb to 4000 on DXO  
 VOR/DME R-035 to  
 LUPAY/DXO VOR/DME  
 15.6 DME and hold.

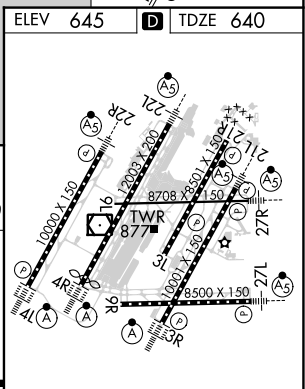
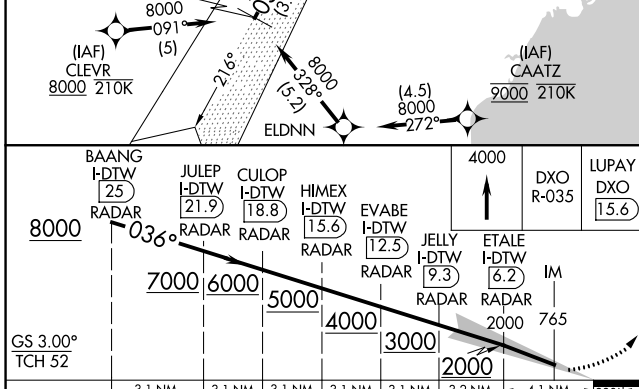
Simultaneous approach authorized. Use of FD or AP required during simultaneous operations. Dual VHF Comm required. See additional requirements on AAPP. Procedure NA when glide slope not available.

D-ATIS <b>133.675</b>	DETROIT APP CON <b>124.05 284.0</b>	METRO TOWER <b>128.125 317.725</b> <b>PRM 135.775</b>	GND CON <b>121.8 (NW) 119.45 (NE)</b> <b>132.725 (SW) 119.25 (SE)</b>	CLNC DEL <b>120.65</b>	CPDLC
--------------------------	--	---	---	---------------------------	-------



EC-1, 28 NOV 2024 to 26 DEC 2024

EC-1, 28 NOV 2024 to 26 DEC 2024



CATEGORY	A	B	C	D
S-ILS 4R	CAT II RA 104/12		100 DA 740	
S-ILS 4R	CAT III		RVR 06	

**CATEGORY II & III ILS - SPECIAL AIRCREW & AIRCRAFT CERTIFICATION REQUIRED**

TDZ/CL Rws 3R, 4L, 4R and 22R  
REIL Rws 3L, 9L, 9R and 21R  
HIRL all runways