

ILS PRM Y RWY 22R (CLOSE PARALLEL)

DETROIT METRO WAYNE COUNTY (DTW)

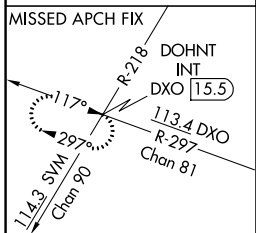
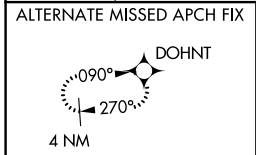
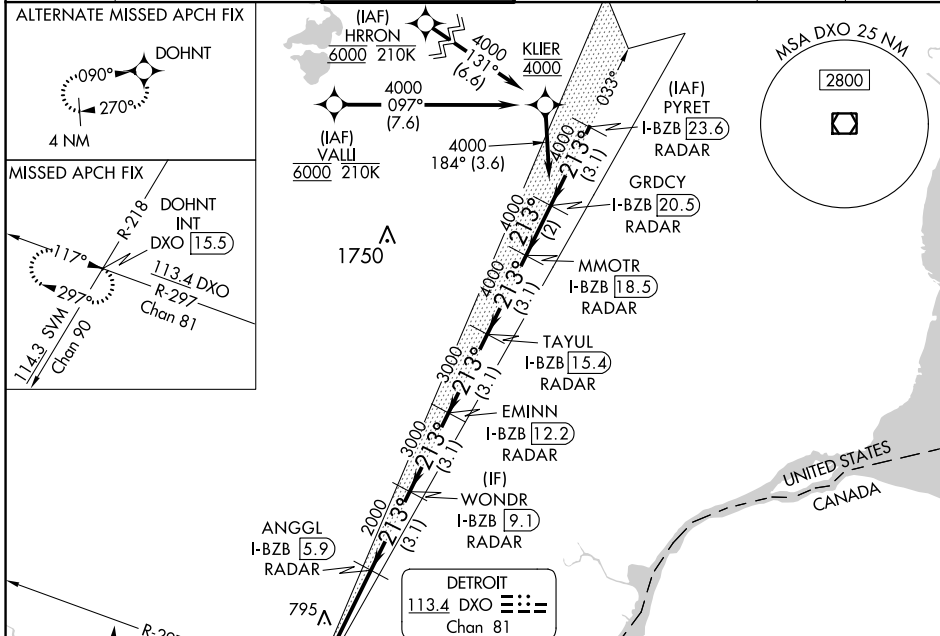
LOC/DME I-BZB 111.75 Chan 54 (Y)	APP CRS 213°	Rwy Idg TDZE Apt Elev 10000 642 645
--	------------------------	---

RNAV 1-GPS, HRRON and VALLI: RNAV 1-DME/DME/IRU or GPS required.
Aircraft not DME/DME/IRU or GPS equipped - RADAR required for procedure entry.

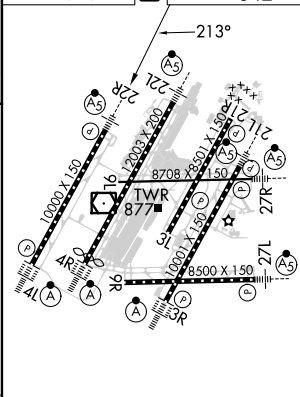
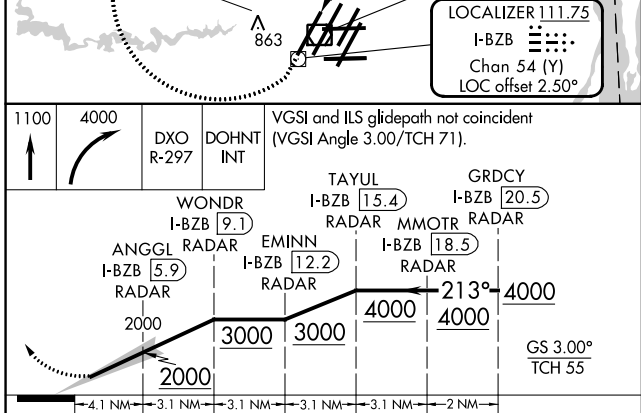
Simultaneous approach authorized.
Procedure NA when glide slope not available (ILS procedures only).
Dual VHF Comm required. See additional requirements on AAUP.

MALSR 	MISSED APPROACH: Climb to 1100 then climbing right turn to 4000 on DXO VOR/DME R-297 to DOHNT INT/DXO 15.5 DME and hold.
-----------	--

D-ATIS 133.675	DETROIT APP CON 124.05 284.0	METRO TOWER 135.0 317.275 PRM 127.05	GND CON 121.8 (NW) 119.45 (NE) 132.725 (SW) 119.25 (SE)	CLNC DEL 120.65	CPDLC
--------------------------	--	--	---	---------------------------	-------



ELEV 645	TDZE 642
----------	----------



CATEGORY	A	B	C	D
S-ILS 22R		892/24	250 (300-1/2)	

EC-1, 28 NOV 2024 to 26 DEC 2024

EC-1, 28 NOV 2024 to 26 DEC 2024