

LOC/DME I-JKI 111.95	APP CRS 216°	Rwy Idg TDZE Apt Elev	10000 642 645
Chan 56 (Y)			

ILS PRM Z RWY 22R (CLOSE PARALLEL)

DETROIT METRO WAYNE COUNTY (DTW)

RNAV 1-GPS. HRRON and VALLI: RNAV 1-DME/DME/IRU or GPS required.
 Aircraft not DME/DME/IRU or GPS equipped - RADAR required for procedure entry.

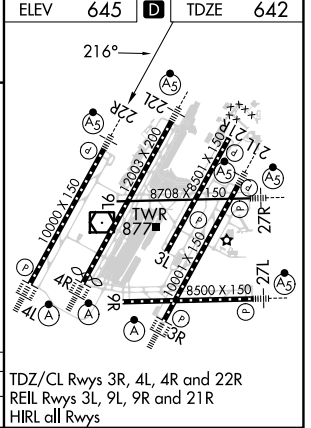
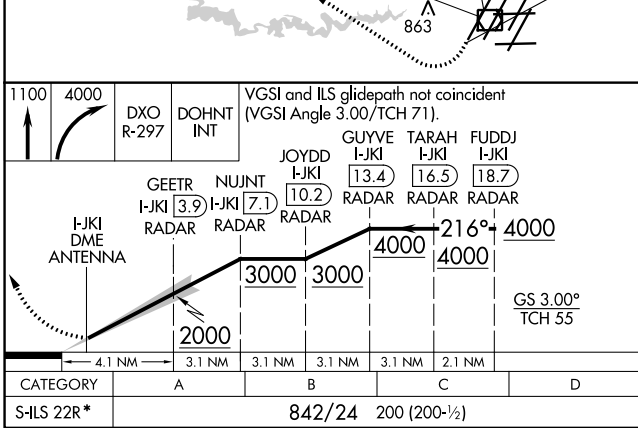
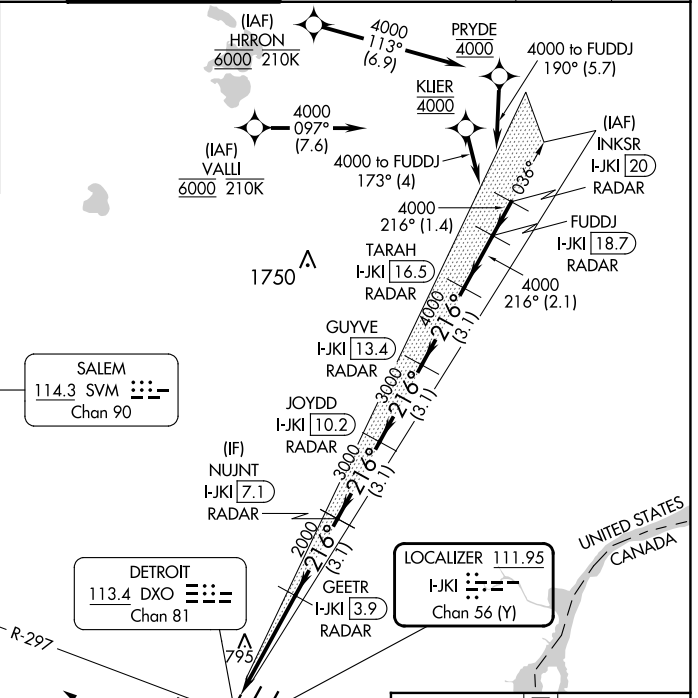
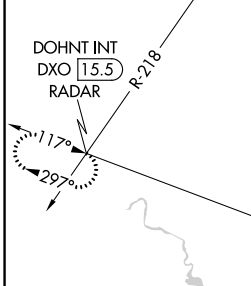
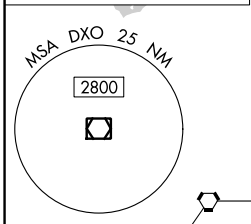
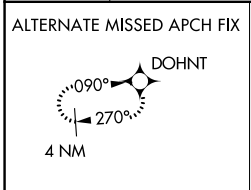
Simultaneous approach authorized. Use of FD or AP required during simultaneous operations. Dual VHF Comm required. See additional requirements on AAPP.

*RVR 1800 authorized with use of FD or AP or HUD to DA.



MISSED APPROACH: Climb to 1100 then climbing right turn to 4000 on DXO VOR/DME R-297 to DOHNT INT/DXO 15.5 DME/RADAR and hold.

D-ATIS 133.675	DETROIT APP CON 124.05 284.0	METRO TOWER 135.0 317.725 PRM 127.05	GND CON 121.8 (NW) 119.45 (NE) 132.725 (SW) 119.25 (SE)	CLNC DEL 120.65	CPDLC
--------------------------	--	--	---	---------------------------	-------



DETROIT, MICHIGAN	42°13'N-83°21'W	DETROIT METRO WAYNE COUNTY (DTW)
Orig-B 30JAN20		ILS PRM Z RWY 22R (CLOSE PARALLEL)

EC-1, 28 NOV 2024 to 26 DEC 2024

EC-1, 28 NOV 2024 to 26 DEC 2024