

(MIGGY3.MIGGY) 24137

DETROIT METRO WAYNE COUNTY (DTW)

# MIGGY THREE DEPARTURE (RNAV)

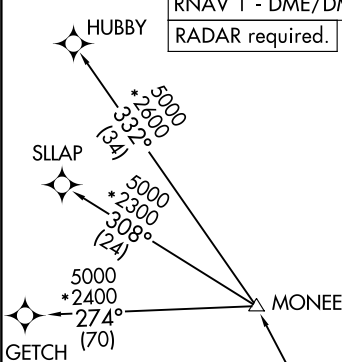
AL-119 (FAA)

DETROIT, MICHIGAN

RNAV 1 - DME/DME/IRU or GPS.  
RADAR required.

**TOP ALTITUDE:**  
**17000**

D-ATIS 118.125  
CLNC DEL 120.65  
CPDLC  
GND CON  
121.8 (NW) 119.45 (NE)  
132.725 (SW) 119.25 (SE)  
METRO TOWER  
118.4 317.725 (Rwys 3L/R, 21L/R, 27R)  
128.75 317.725 (Rwy 27L)  
135.0 317.725 (Rwys 4L/R, 22L/R)  
DETROIT DEP CON  
125.525 284.0



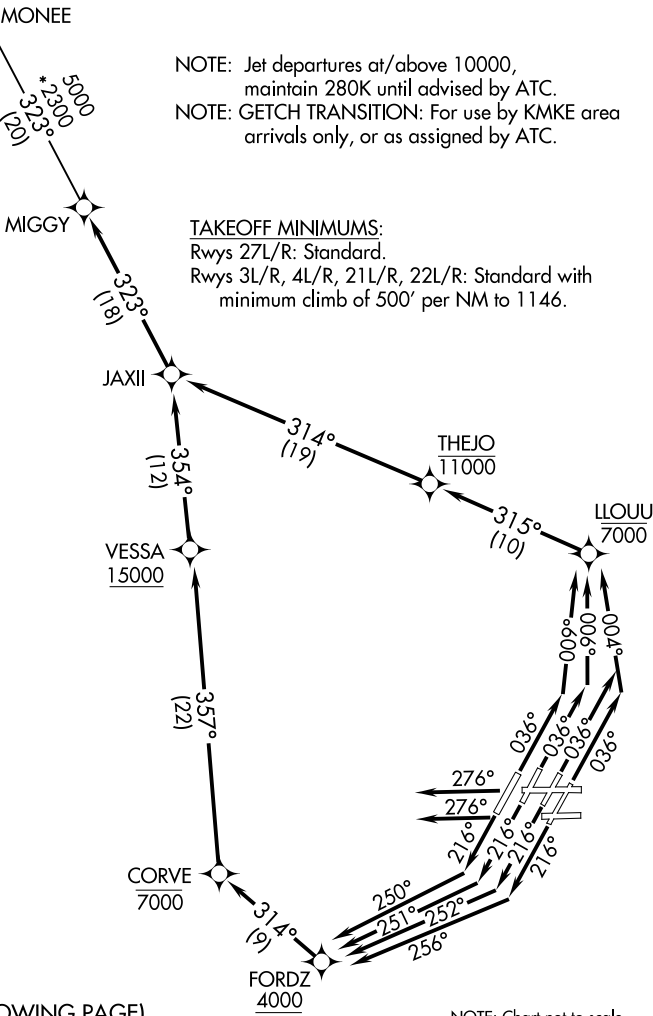
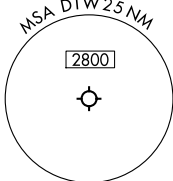
NOTE: Jet departures at/above 10000, maintain 280K until advised by ATC.

NOTE: GETCH TRANSITION: For use by KMKE area arrivals only, or as assigned by ATC.

TAKEOFF MINIMUMS:

Rwys 27L/R: Standard.

Rwys 3L/R, 4L/R, 21L/R, 22L/R: Standard with minimum climb of 500' per NM to 1146.



(CONTINUED ON FOLLOWING PAGE)

NOTE: Chart not to scale.

# MIGGY THREE DEPARTURE (RNAV)

DETROIT, MICHIGAN

(MIGGY3.MIGGY) 16MAY24

DETROIT METRO WAYNE COUNTY (DTW)

EC-1, 28 NOV 2024 to 26 DEC 2024

EC-1, 28 NOV 2024 to 26 DEC 2024



DEPARTURE ROUTE DESCRIPTION

SEE ADDITIONAL REQUIREMENTS IN RNAV DEPARTURE AAUP.

TAKEOFF RUNWAYS 3L/R: Climb on heading 036° to intercept course 004° to cross LLOUU at or below 7000, then on track 315° to cross THEJO at or below 11000, then on track 314° to JAXII, thence....

TAKEOFF RUNWAY 4L: Climb on heading 036° to intercept course 009° to cross LLOUU at or below 7000, then on track 315° to cross THEJO at or below 11000, then on track 314° to JAXII, thence....

TAKEOFF RUNWAY 4R: Climb on heading 036° to intercept course 006° to cross LLOUU at or below 7000, then on track 315° to cross THEJO at or below 11000, then on track 314° to JAXII, thence....

TAKEOFF RUNWAY 21L: Climb on heading 216° to intercept course 256° to cross FORDZ at or above 4000, then on track 314° to cross CORVE at or below 7000, then on track 357° to cross VESSA at or above 15000, then on track 354° to JAXII, thence....

TAKEOFF RUNWAY 21R: Climb on heading 216° to intercept course 252° to cross FORDZ at or above 4000, then on track 314° to cross CORVE at or below 7000, then on track 357° to cross VESSA at or above 15000, then on track 354° to JAXII, thence....

TAKEOFF RUNWAY 22L: Climb on heading 216° to intercept course 251° to cross FORDZ at or above 4000, then on track 314° to cross CORVE at or below 7000, then on track 357° to cross VESSA at or above 15000, then on track 354° to JAXII, thence....

TAKEOFF RUNWAY 22R: Climb on heading 216° to intercept course 250° to cross FORDZ at or above 4000, then on track 314° to cross CORVE at or below 7000, then on track 357° to cross VESSA at or above 15000, then on track 354° to JAXII, thence....

TAKEOFF RUNWAY 27L/R: Climb on heading 276° or as assigned by ATC, for RADAR vectors to JAXII, thence....

....on track 323° to MIGGY, then on (transition). Maintain 17000 or as assigned by ATC, expect filed altitude 10 minutes after departure.

- GETCH TRANSITION (MIGGY3.GETCH):
- HUBBY TRANSITION (MIGGY3.HUBBY):
- SLLAP TRANSITION (MIGGY3.SLLAP):

EC-1, 28 NOV 2024 to 26 DEC 2024

EC-1, 28 NOV 2024 to 26 DEC 2024