

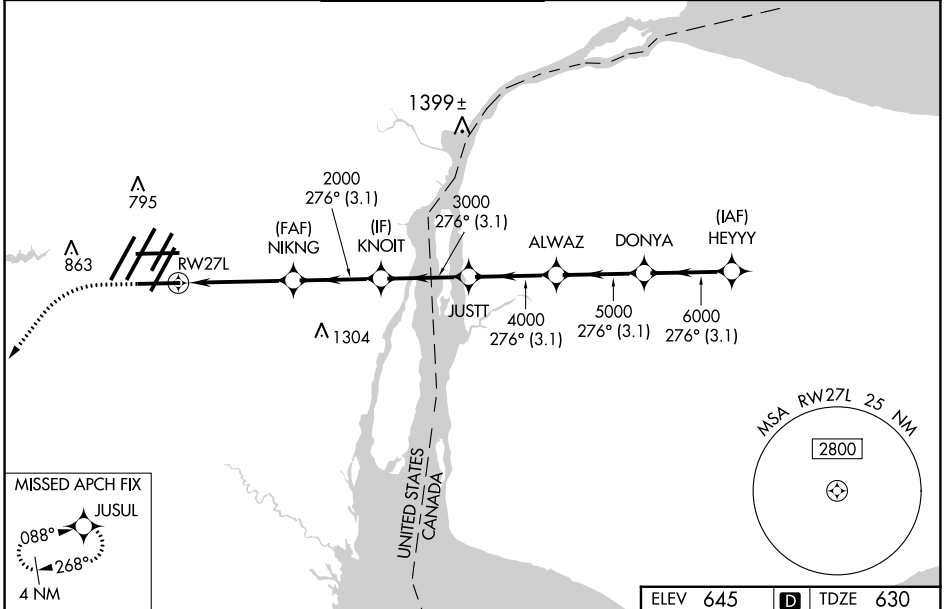
WAAS CH 53300	APP CRS 276°	Rwy Idg TDZE 630	8500
W27B		Apt Elev 645	

RNAV (GPS) RWY 27L

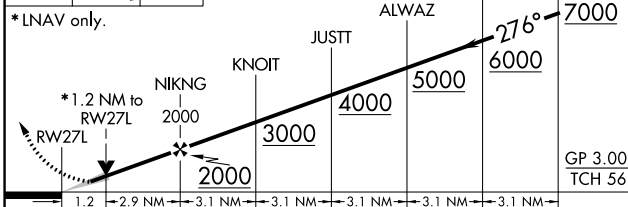
DETROIT METRO WAYNE COUNTY (DTW)

RNP APCH: ▼ For uncompensated Baro-VNAV systems, LNAV/VNAV NA below -19°C (-2°F) or above 54°C (130°F). Simultaneous approach authorized. LNAV procedure NA during simultaneous operations. Use of FD or AP required during simultaneous operations. For inop ALS, increase LNAV/VNAV all Cats visibility to RVR 5000. ** RVR 1800 authorized with use of FD or AP or HUD to DA.	MALSR 	MISSED APPROACH: Climb to 1100 then climbing left turn to 4000 direct JUSUL and hold.
---	-----------	--

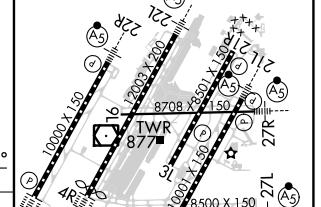
D-ATIS 133.675	DETROIT APP CON 124.05 284.0	METRO TOWER 128.75 317.725	GND CON 121.8 (NW) 119.45 (NE) 132.725 (SW) 119.25 (SE)	CLNC DEL 120.65	CPDLC
--------------------------	--	--------------------------------------	---	---------------------------	-------



1100	4000	JUSUL	VGSI and RNAV glidepath not coincident (VGSI Angle 3.00/TCH 71).	HEYYY
------	------	-------	--	-------



ELEV 645	D	TDZE 630
----------	----------	----------



CATEGORY	A	B	C	D
LPV DA**		830/24	200 (200-½)	
LNAV/VNAV DA		958/30	328 (400-⅝)	
LNAV MDA	1080/24	450 (500-½)	1080/45	450 (500-⅞)
C CIRCLING	1180-1	535 (600-1)	1180-1½ 535 (600-1½)	1240-2 595 (600-2)

TDZ/CL Rwy's 3R, 4L, 4R and 22R
 REIL Rwy's 3L, 9L, 9R and 21R
 HIRL all runways

EC-1, 28 NOV 2024 to 26 DEC 2024

EC-1, 28 NOV 2024 to 26 DEC 2024