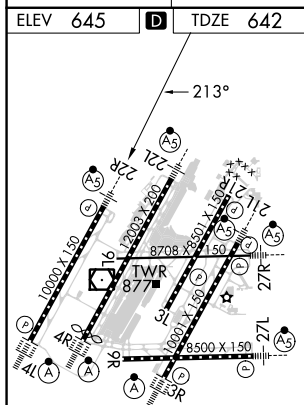
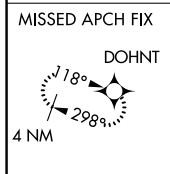
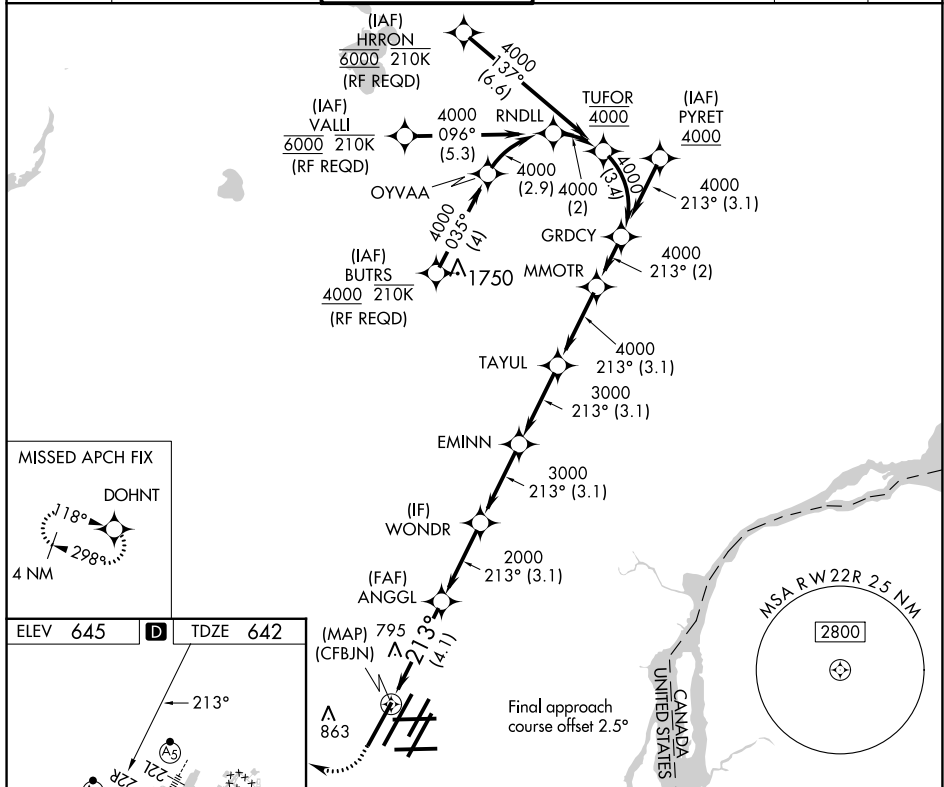


APP CRS 213°	Rwy Idg TDZE Apt Elev	10000 642 645
------------------------	-----------------------------	--

RNAV (RNP) U RWY 22R

DETROIT METRO WAYNE COUNTY (DTW)

RNP AR APCH.		MALSR		MISSED APPROACH: Climb to 1100 then climbing right turn to 4000 direct DOHNT and hold.		
<p>▼ For uncompensated Baro-VNAV systems, procedure NA below -19°C (-2°F) or above 54°C (130°F). Simultaneous approach authorized. For inop ALS, increase RNP 0.30 all Cats visibility to RVR 5500.</p>						
D-ATIS 133.675	DETROIT APP CON 124.05 284.0	METRO TOWER 135.0 317.725	GND CON 121.8 (NW) 132.725 (SW)	119.45 (NE) 119.25 (SE)	CLNC DEL 120.65	CPDLC



1100	4000	DOHNT	VGSi and RNAV glidepath not coincident (VGSi Angle 3.00/TCH 71).			
ANGGL (CFBJN) 2000		WONDR 3000	EMINN 3000	TAYUL 4000	MMOTR 4000	GRDCY 4000
← 213°		GP 3.00° TCH 55				
← 4.1 NM		← 3.1 NM	← 3.1 NM	← 3.1 NM	← 3.1 NM	← 2 NM

CATEGORY	A	B	C	D
RNP 0.30 DA	987/30		345 (400-5%)	
AUTHORIZATION REQUIRED				

EC-1, 28 NOV 2024 to 26 DEC 2024

EC-1, 28 NOV 2024 to 26 DEC 2024