

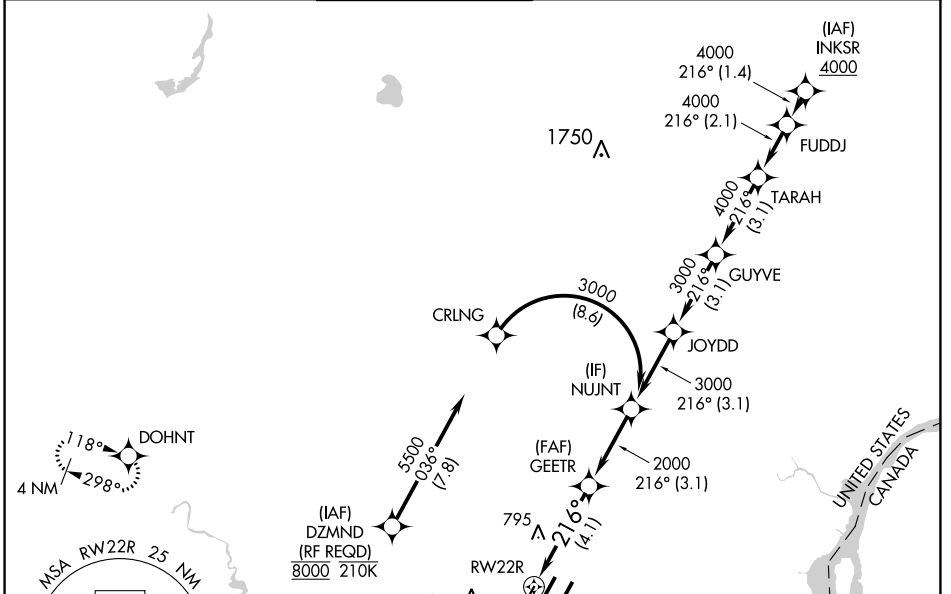
APP CRS	Rwy Idg	10000
216°	TDZE	642
	Apt Elev	645

RNAV (RNP) W RWY 22R

DETROIT METRO WAYNE COUNTY (DTW)

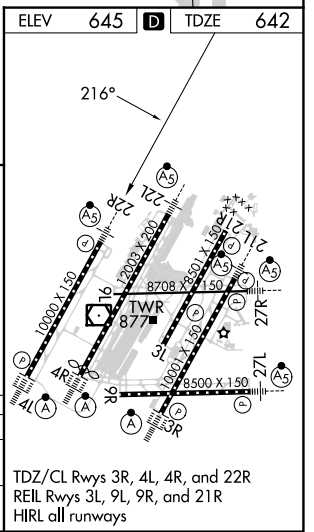
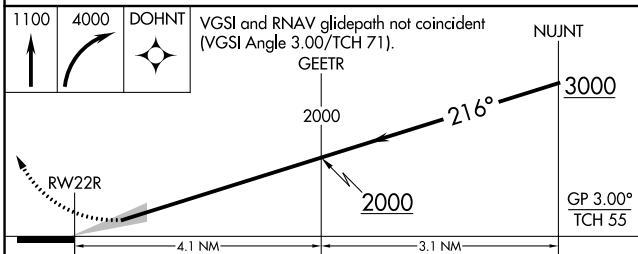
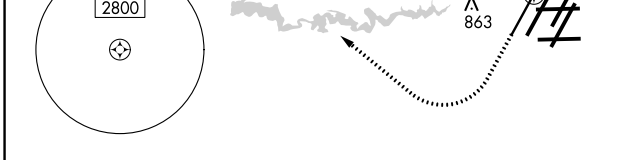
RNP AR APCH.	MALSR	MISSED APPROACH: Climb to 1100 then climbing right turn to 4000 direct DOHNT and hold, continue climb-in-hold to 4000.
▼ For uncompensated Baro-VNAV systems, procedure NA below -19°C or above 54°C. Simultaneous approach authorized. For inop ALS, increase RNP 0.30 all Cats visibility to RVR 5500.		

D-ATIS	DETROIT APP CON	METRO TOWER	GND CON	CINC DEL	CPDLC
133.675	124.05 284.0	135.0 317.725	121.8 (NW) 119.45 (NE) 132.725 (SW) 119.25 (SE)	120.65	



EC-1, 28 NOV 2024 to 26 DEC 2024

EC-1, 28 NOV 2024 to 26 DEC 2024



CATEGORY	A	B	C	D
RNP 0.30 DA	987/30 345 (400-5/8)			

AUTHORIZATION REQUIRED