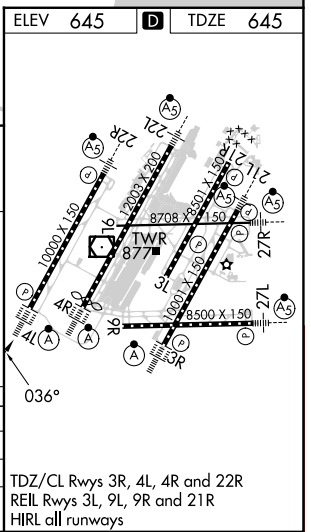
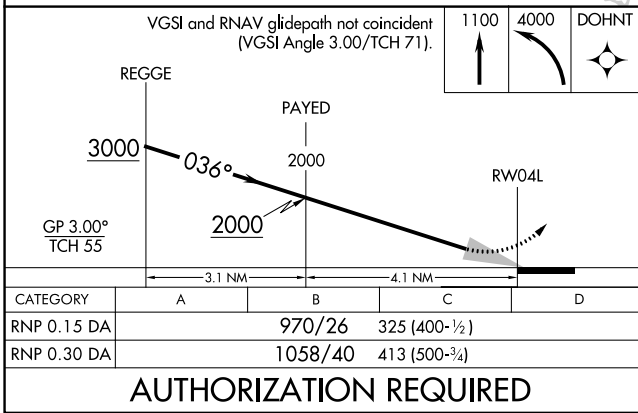
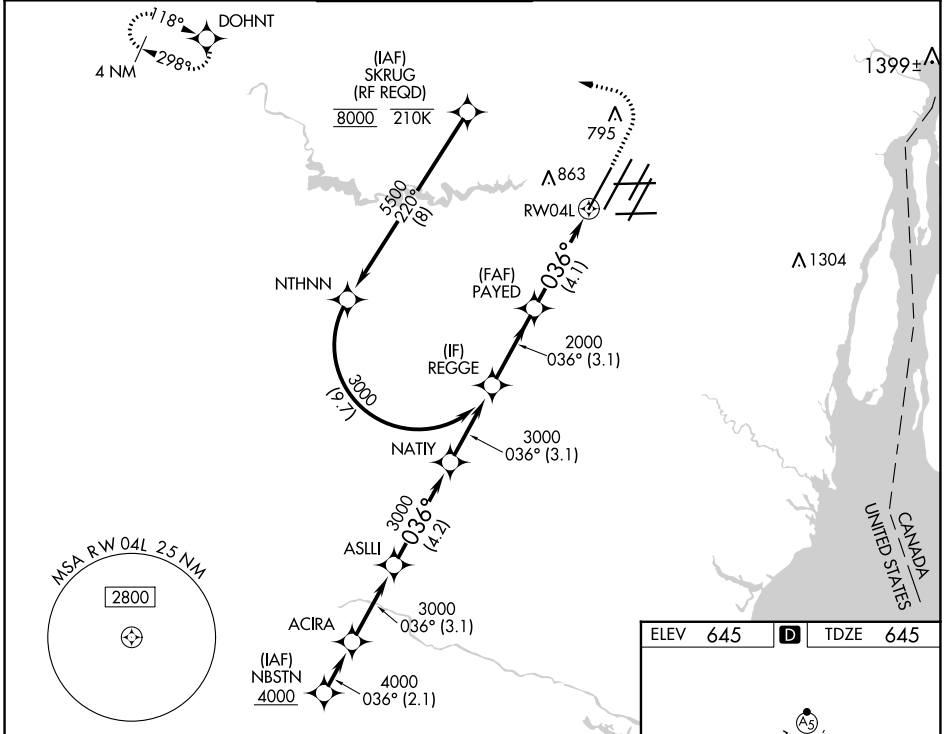


APP CRS 036°	Rwy Idg 10000
TDZE 645	
Apt Elev 645	

RNAV (RNP) W RWY 4L

DETROIT METRO WAYNE COUNTY (DTW)

RNP AR APCH.		GND CON 121.8 (NW) 119.45 (NE) 132.725 (SW) 119.25 (SE)		CINC DEL 120.65	CPDLC
<p>Simultaneous approach authorized. For uncompensated Baro-VNAV systems, procedure NA below -19°C or above 54°C. For inop ALS, increase RNP 0.30 all Cats visibility to RVR 6000.</p>		ALSF-2		<p>MISSED APPROACH: Climb to 1100 then climbing left turn to 4000 direct DOHNT and hold, continue climb-in-hold to 4000.</p>	



AUTHORIZATION REQUIRED

EC-1, 28 NOV 2024 to 26 DEC 2024

EC-1, 28 NOV 2024 to 26 DEC 2024