

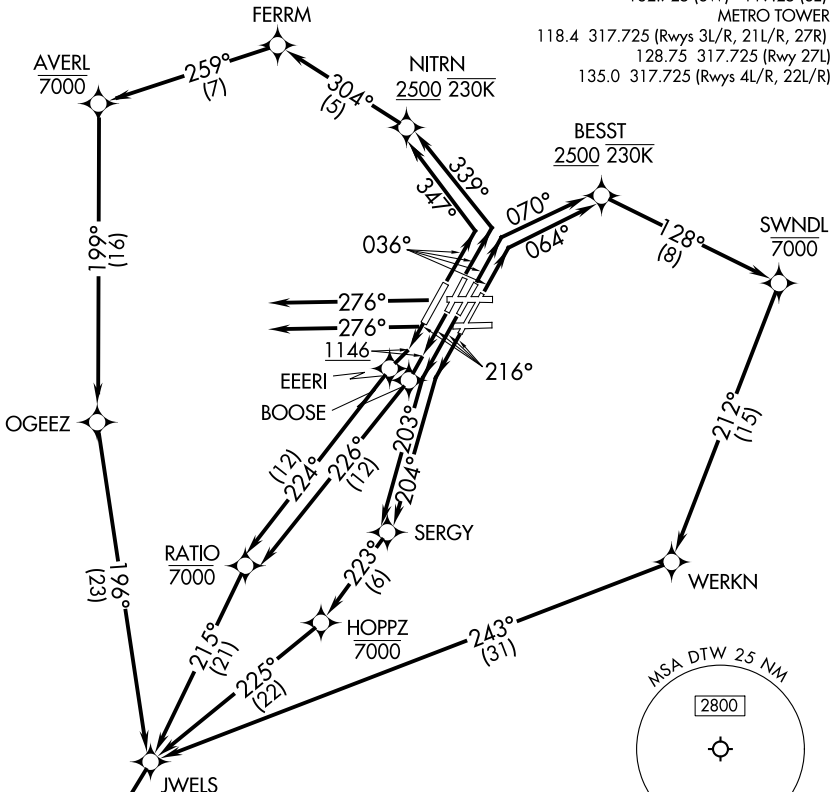
SNDRS THREE DEPARTURE (RNAV) Departure Routes

TOP ALTITUDE:
17000

RNAV-1 DME/DME/IRU or GPS.

RADAR required.

DETROIT DEP CON
 125.525 284.0 (Rwys 4L/R, 22L/R)
 132.025 284.0 (Rwys 3L/R, 21L/R, 27L/R)
 D-ATIS 118.125
 CLNC DEL 120.65
 CPDLC
 GND CON
 121.8 (NW) 119.45 (NE)
 132.725 (SW) 119.25 (SE)
 METRO TOWER
 118.4 317.725 (Rwys 3L/R, 21L/R, 27R)
 128.75 317.725 (Rwy 27L)
 135.0 317.725 (Rwys 4L/R, 22L/R)



EC-1, 28 NOV 2024 to 26 DEC 2024

EC-1, 28 NOV 2024 to 26 DEC 2024

NOTE: Turbojet departures at/above 10000, maintain 280K until advised by ATC.
 NOTE: TORRR Transition: For use by KIND and KCVG area arrivals only and flights filed at or below FL220, or as assigned by ATC.

TAKEOFF MINIMUMS:
 Rwys 27L/R: Standard
 Rwys 3L/R, 4L/R, 21L/R, 22L/R: Standard with minimum climb of 500' per NM to 1146.

(CONTINUED ON FOLLOWING PAGE)

NOTE: Chart not to scale.

◆ SNDRS
 See following page for Transition Routes

SNDRS THREE DEPARTURE (RNAV) Departure Routes

(SNDRS3.SNDRS) 16MAY24

SNDRS THREE DEPARTURE (RNAV) Transition Routes

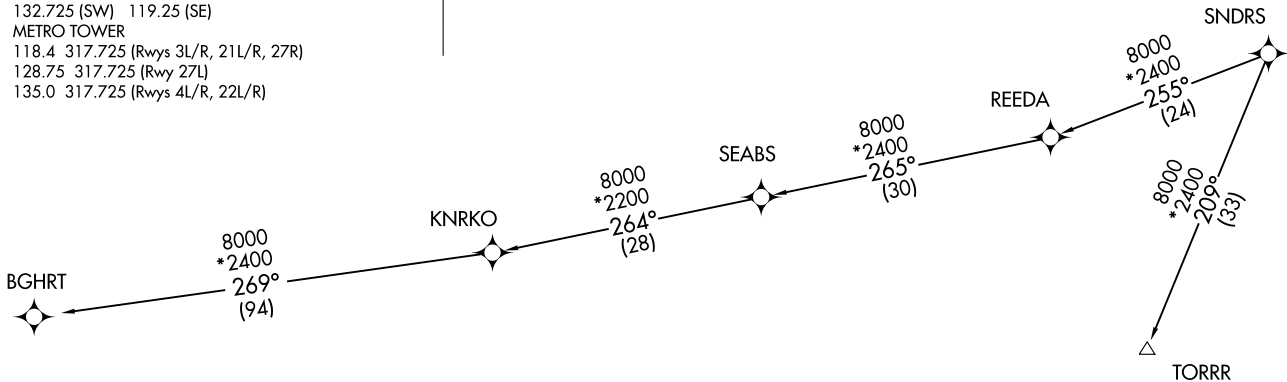
DETROIT, MICHIGAN
DETROIT METRO WAYNE COUNTY (DTW)

DETROIT DEP CON
 125.525 284.0 (Rwys 4L/R, 22L/R)
 132.025 284.0 (Rwys 3L/R, 21L/R, 27L/R)
 D-ATIS 118.125
 CLNC DEL 120.65
 CPDLC
 GND CON
 121.8 (NW) 119.45 (NE)
 132.725 (SW) 119.25 (SE)
 METRO TOWER
 118.4 317.725 (Rwys 3L/R, 21L/R, 27R)
 128.75 317.725 (Rwy 27L)
 135.0 317.725 (Rwys 4L/R, 22L/R)



RNAV-1 DME/DME/IRU or GPS.
 RADAR required.

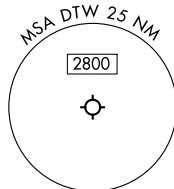
TOP ALTITUDE:
17000



NOTE: Turbojet departures at/above 10000, maintain 280K until advised by ATC.
 NOTE: TORRR Transition: For use by KIND and KCVG area arrivals only and flights filed at or below FL220, or as assigned by ATC.

TAKEOFF MINIMUMS:

Rwys 27L/R: Standard
 Rwys 3L/R, 4L/R, 21L/R, 22L/R: Standard with minimum climb of 500' per NM to 1146.



NOTE: Chart not to scale.

(CONTINUED ON FOLLOWING PAGE)

(SNDRS3.SNDRS) 24137 AL-119 (FAA)
 SNDRS THREE DEPARTURE (RNAV) Transition Routes
 DETROIT METRO WAYNE COUNTY (DTW)
 DETROIT, MICHIGAN



DEPARTURE ROUTE DESCRIPTION

SEE ADDITIONAL REQUIREMENTS IN RNAV DEPARTURE AAUP.

TAKEOFF RUNWAY 3L: Climb on heading 036° to intercept course 070° to cross BESST at or above 2500 and at or below 230K, then on track 128° to cross SWNDL at or below 7000, then on track 212° to WERKN, then on track 243° to JWELS, thence...

TAKEOFF RUNWAY 3R: Climb on heading 036° to intercept course 064° to cross BESST at or above 2500 and at or below 230K, then on track 128° to cross SWNDL at or below 7000, then on track 212° to WERKN, then on track 243° to JWELS, thence...

TAKEOFF RUNWAY 4L: Climb on heading 036° to intercept course 347° to cross NITRN at or above 2500 and at or below 230K, then on track 304° to FERRM, then on track 259° to cross AVERL at or below 7000, then or track 199° to OGEEZ, then on track 196° to JWELS, thence...

TAKEOFF RUNWAY 4R: Climb on heading 036° to intercept course 339° to cross NITRN at or above 2500 and at or below 230K, then on track 304° to FERRM, then on track 259° to cross AVERL at or below 7000, then or track 199° to OGEEZ, then on track 196° to JWELS, thence....

TAKEOFF RUNWAY 21L: Climb on heading 216° to intercept course 204° to SERGY, then on track 223° to cross HOPPZ at or below 7000, then on track 225° to JWELS, thence....

TAKEOFF RUNWAY 21R: Climb on heading 216° to intercept course 203° to SERGY, then on track 223° to cross HOPPZ at or below 7000, then on track 225° to JWELS, thence....

TAKEOFF RUNWAY 22L: Climb on heading 216° to 1146, then direct BOOSE, then on track 226° to cross RATIO at or below 7000, then on track 215° to JWELS, thence....

TAKEOFF RUNWAY 22R: Climb on heading 216° to 1146, then direct EEERI, then on track 224° to cross RATIO at or below 7000, then on track 215° to JWELS, thence....

TAKEOFF RUNWAYS 27L/27R: Climb on heading 276° or as assigned by ATC, for RADAR vectors to JWELS, thence....

...on track 218° to SNDRS, then on (transition). Maintain 17000, expect filed altitude 10 minutes after departure.

BGHRT TRANSITION (SNDRS3.BGHRT):

TORRR TRANSITION (SNDRS3.TORRR):

EC-1, 28 NOV 2024 to 26 DEC 2024

EC-1, 28 NOV 2024 to 26 DEC 2024