

(TRMML4.TRMML) 24137

AL-119 (FAA)

DETROIT METRO WAYNE COUNTY (DTW)

TRMML FOUR DEPARTURE (RNAV) Departure Routes

DETROIT, MICHIGAN

**TOP ALTITUDE:
17000**



DETROIT DEP CON
 125.525 284.0 (Rwys 22L/R, 27L/R)
 132.025 284.0 (Rwys 3L/R, 4L/R, 21L/R)
 D-ATIS 118.125
 CLNC DEL 120.65
 CPDLC
 GND CON
 121.8 (NW) 119.45 (NE)
 132.725 (SW) 119.25 (SE)
 METRO TOWER
 118.4 317.725 (Rwys 3L/R, 21L/R, 27R)
 128.75 317.725 (Rwy 27L)
 135.0 317.725 (Rwys 4L/R, 22L/R)

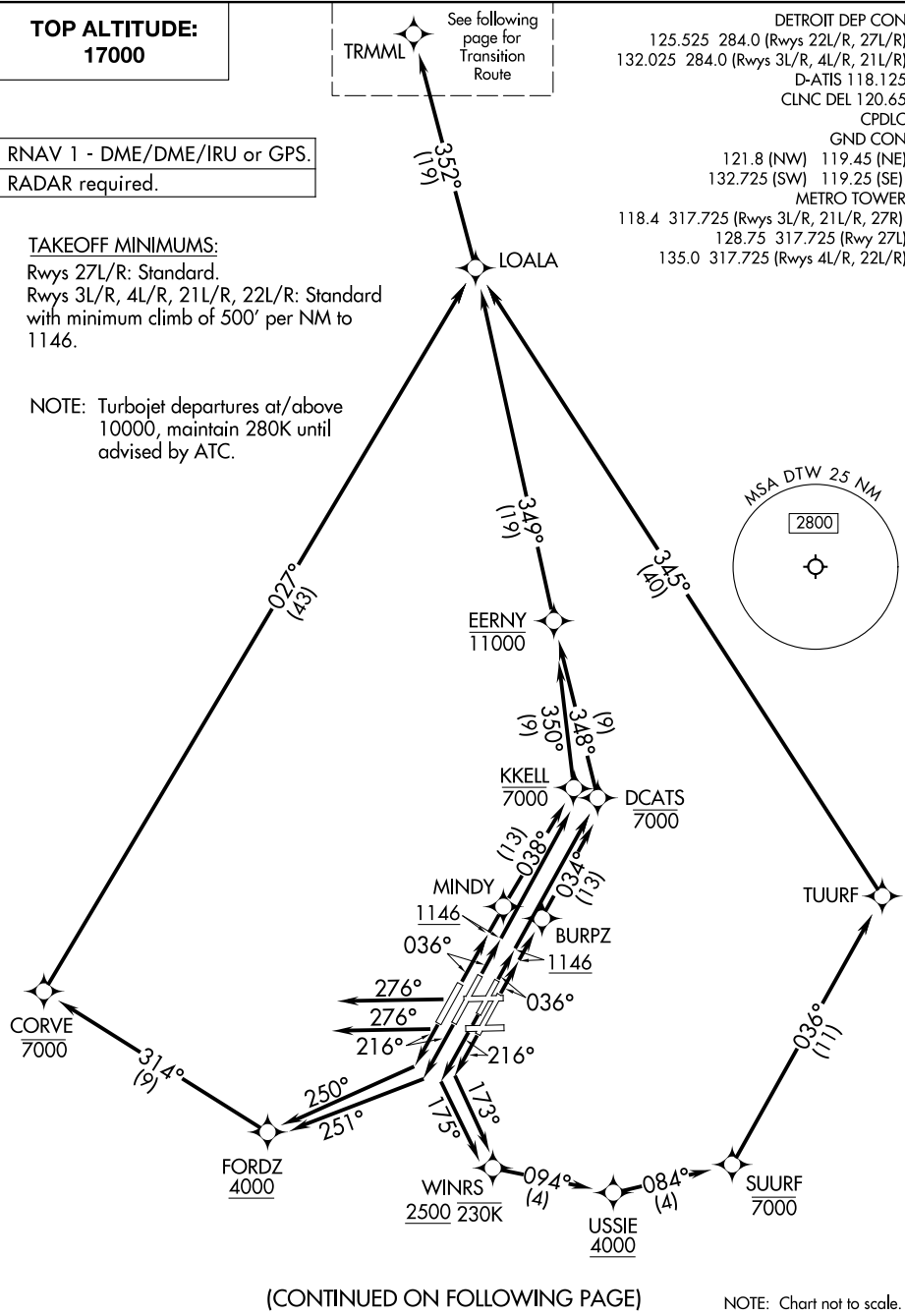
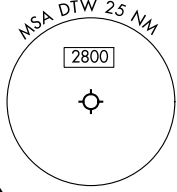
RNAV 1 - DME/DME/IRU or GPS.

RADAR required.

TAKEOFF MINIMUMS:

Rwys 27L/R: Standard.
 Rwys 3L/R, 4L/R, 21L/R, 22L/R: Standard
 with minimum climb of 500' per NM to 1146.

NOTE: Turbojet departures at/above
 10000, maintain 280K until
 advised by ATC.



(CONTINUED ON FOLLOWING PAGE)

NOTE: Chart not to scale.

EC-1, 28 NOV 2024 to 26 DEC 2024

EC-1, 28 NOV 2024 to 26 DEC 2024

TRMML FOUR DEPARTURE (RNAV) Departure Routes

DETROIT, MICHIGAN

(TRMML4.TRMML) 16MAY24

DETROIT METRO WAYNE COUNTY (DTW)

(TRMML4.TRMML) 24137

AL-119 (FAA)

DETROIT METRO WAYNE COUNTY (DTW)

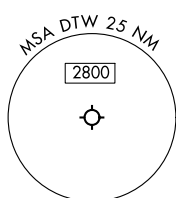
TRMML FOUR DEPARTURE (RNAV) Transition Route

DETROIT, MICHIGAN

**TOP ALTITUDE:
17000**

RNAV 1 - DME/DME/IRU or GPS.

RADAR required.



NOTE: Chart not to scale.

GNZOE



DDEEZ



TRMML

DETROIT DEP CON
 125.525 284.0 (Rwys 22L/R, 27L/R)
 132.025 284.0 (Rwys 3L/R, 4L/R, 21L/R)
 D-ATIS 118.125
 CLNC DEL 120.65
 CPDLC
 GND CON
 121.8 (NW) 119.45 (NE)
 132.725 (SW) 119.25 (SE)
 METRO TOWER
 118.4 317.725 (Rwys 3L/R, 21L/R, 27R)
 128.75 317.725 (Rwy 27L)
 135.0 317.725 (Rwys 4L/R, 22L/R)

NOTE: Turbojet departures at/above 10000, maintain 280K until advised by ATC.

NOTE: See additional requirements on AAUP.

DEPARTURE ROUTE DESCRIPTION

SEE ADDITIONAL REQUIREMENTS IN RNAV DEPARTURE AAUP.

TAKEOFF RUNWAY 3L: Climb on heading 036° to 1146, then direct to cross DCATS at or below 7000, then on track 348° to cross EERNY at or below 11000, then on track 349° to LOALA, thence....

TAKEOFF RUNWAY 3R: Climb on heading 036° to 1146, then direct BURPZ, then on track 034° to cross DCATS at or below 7000, then on track 348° to cross EERNY at or below 11000, then on track 349° to LOALA, thence....

TAKEOFF RUNWAY 4L: Climb on heading 036° to 1146, then direct MINDY, then on track 038° to cross KKELL at or below 7000, then on track 350° to cross EERNY at or below 11000, then on track 349° to LOALA, thence....

TAKEOFF RUNWAY 4R: Climb on heading 036° to 1146, then direct to cross KKELL at or below 7000, then on track 350° to cross EERNY at or below 11000, then on track 349° to LOALA, thence....

TAKEOFF RUNWAY 21L: Climb on heading 216° to intercept course 173° to cross WINRS at or above 2500 and at or below 230K, then on track 094° to cross USSIE at or above 4000, then on track 084° to cross SUURF at or below 7000, then on track 036° to TUURF, then on track 345° to LOALA, thence....

TAKEOFF RUNWAY 21R: Climb on heading 216° to intercept course 175° to cross WINRS at or above 2500 and at or below 230K, then on track 094° to cross USSIE at or above 4000, then on track 084° to cross SUURF at or below 7000, then on track 036° to TUURF, then on track 345° to LOALA, thence....

TAKEOFF RUNWAY 22L: Climb on heading 216° to intercept course 251° to cross FORDZ at or above 4000, then on track 314° to cross CORVE at or below 7000, then on track 027° to LOALA, thence....

TAKEOFF RUNWAY 22R: Climb on heading 216° to intercept course 250° to cross FORDZ at or above 4000, then on track 314° to cross CORVE at or below 7000, then on track 027° to LOALA, thence....

TAKEOFF RUNWAY 27L/R: Climb on heading 276° or as assigned by ATC, for RADAR vectors to LOALA, thence....

...on track 352° to TRMML, then on (transition). Maintain 17000, expect filed altitude 10 minutes after departure.

GNZOE TRANSITION (TRMML4.GNZOE)

TRMML FOUR DEPARTURE (RNAV) Transition Route

DETROIT, MICHIGAN

(TRMML4.TRMML) 16MAY24

DETROIT METRO WAYNE COUNTY (DTW)

EC-1, 28 NOV 2024 to 26 DEC 2024

EC-1, 28 NOV 2024 to 26 DEC 2024