

WAAS CH 49227 W35A	APP CRS 006°	Rwy Idg TDZE Apt Elev	6501 5245 5245
--	------------------------	-----------------------------	---

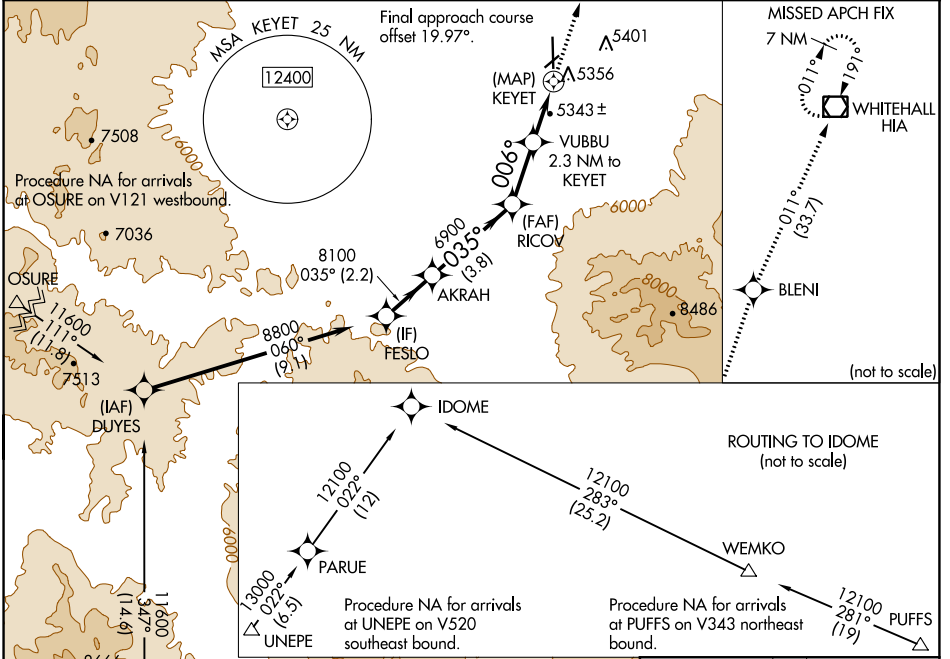
RNAV (GPS) RWY 35

DILLON (DLN)

⚠ When local altimeter setting not received, procedure NA. DME/DME RNP-0.3 NA. Helicopter visibility reduction below 1 SM NA. Night landing: Rwy 4, 22, 35 NA.

MISSED APPROACH: Climb to 11000 direct BLENI and on track 011° to HIA VOR/DME and hold.

ASOS 135.225	SALT LAKE CENTER 132.4 338.3	UNICOM 122.8 (CTAF) 0
------------------------	--	---------------------------------

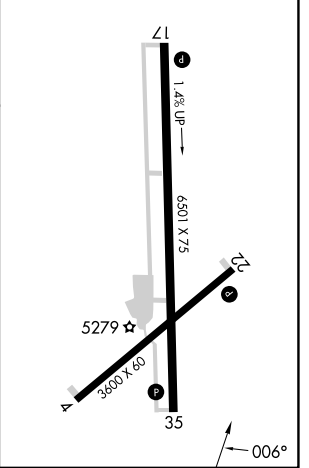
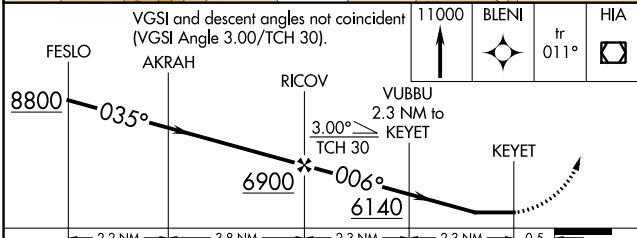


NW-1, 28 NOV 2024 to 26 DEC 2024

NW-1, 28 NOV 2024 to 26 DEC 2024

ELEV	5245	TDZE	5245
------	------	------	------

MIRL Rwy 17-35 and 4-22 0



CATEGORY	A	B	C	D
LP MDA	5600-1 355 (500-1)			
LNAV MDA	5620-1 375 (400-1)			
C CIRCLING	5760-1 515 (600-1)	5860-1 615 (700-1)	5980-2 735 (800-1)	6300-3 1055 (1100-3)