

LOC/DME I-EKO <b>108.5</b> Chan 22	APP CRS <b>243°</b>	Rwy ldg TDZE <b>6418</b> <b>5064</b> Apt Elev <b>5140</b>
--	------------------------	--

# LDA/DME RWY 24

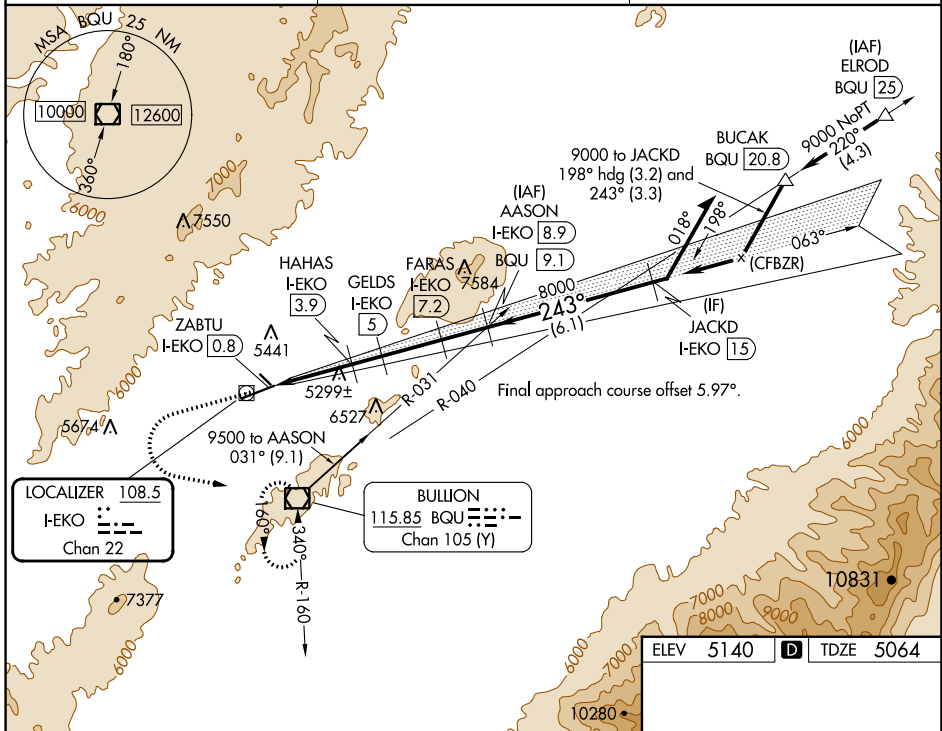
ELKO RGNL (EKO)

**⚠** Inoperative table does not apply to Cats A and B. For inop MALSR, increase S-24 Cat C and D visibility to 2 miles. Rwy 24 helicopter visibility reduction below 3/4 SM NA. Circling Rwy 24 NA at night.

**MALSR**

**MISSED APPROACH:** Climb to 6600 then climbing left turn to 10000 direct BQU VOR/DME and hold, continue climb-in-hold to 10000.

ASOS <b>119.275</b>	SALT LAKE CENTER <b>132.25 338.35</b>	UNICOM <b>123.0 (CTAF)</b>
------------------------	--	-------------------------------

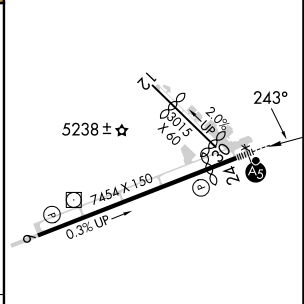


SW-4, 28 NOV 2024 to 26 DEC 2024

SW-4, 28 NOV 2024 to 26 DEC 2024

6600	10000	BQU
Remain within 10 NM		
ZABTU I-EKO 0.8	HAHAS I-EKO 3.9	GELDS I-EKO 5
FARAS I-EKO 7.2	JACKD I-EKO 15	AASON I-EKO 8.9
6240	6600	7400
8000	9000	9500
Use I-EKO DME when on the localizer course.		
← 3.1 NM	← 1.1 NM	← 2.2 NM
← 1.7 NM	← 6.1 NM	

ELEV 5140	TDZE 5064
-----------	-----------



CATEGORY	A	B	C	D
S-24	5800-1	736 (700-1)	5800-1 5/8	736 (700-1 1/8)
<b>C</b> CIRCLING	5920-1 780 (800-1)	6100-1 1/2 960 (1000-1 1/2)	6620-3 1480 (1500-3)	6980-3 1840 (1900-3)

MIRL Rwy 6-24