

APP CRS	Rwy Idg	N/A
117°	TDZE	N/A
	Apt Elev	1763

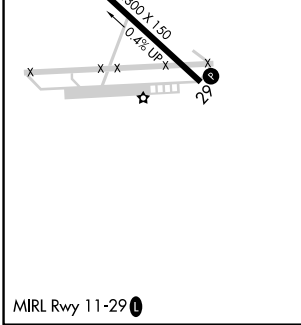
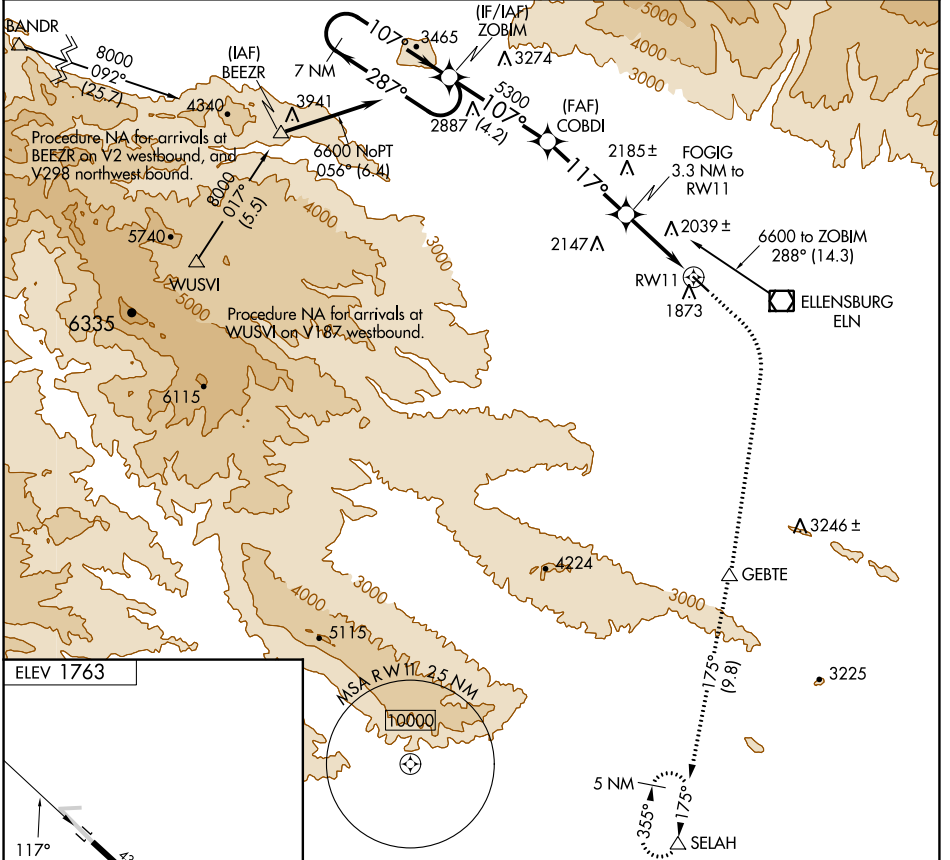
RNAV (GPS)-C

BOWERS FLD (ELN)

⚠ DME/DME RNP-0.3 NA. When local altimeter setting not received, use Pangborn Memorial altimeter setting: Increase all MDA 140 feet; increase Cats B/C visibility ¼ SM.

⚠ MISSED APPROACH: Climb to 2700 then climbing right turn to 5500 direct GEBTE and on track 175° to SELAH and hold.

ASOS 118.375	SEATTLE CENTER 132.6 269.35	UNICOM 123.0 (CTAF) 0
------------------------	---------------------------------------	---------------------------------



7 NM Holding Pattern	ZOBIM	2700	5500	GEBTE	tr 175°	SELAH
6600 ← 287°	→ 107°	→ 107°	→ 117°	→ 117°	→ 175°	→ 175°
			5300	3880	5.91° TCH 40	RW11
	4.2 NM	3.8 NM	3.3 NM			
CATEGORY	A	B	C	D		
CIRCLING	2660-1¼	897 (900-1¼)	2660-2¾ 897 (900-2¾)	2760-3 997 (1000-3)		

NW-1, 28 NOV 2024 to 26 DEC 2024

NW-1, 28 NOV 2024 to 26 DEC 2024