

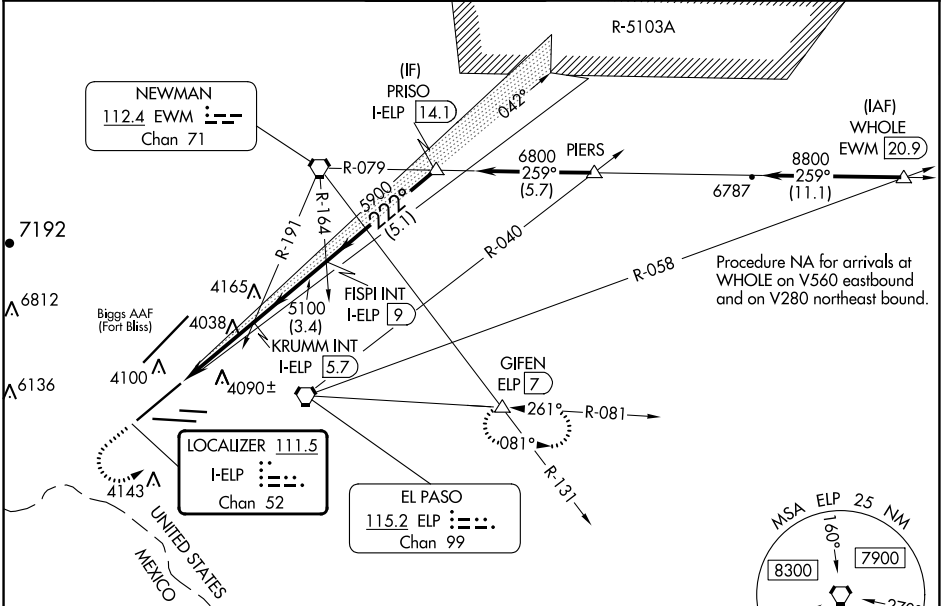
LOC/DME I-ELP <b>111.5</b> Chan <b>52</b>	APP CRS <b>222°</b>	Rwy Idg TDZE Apt Elev	<b>12020</b> <b>3950</b> <b>3962</b>
---	------------------------	-----------------------------	--

# ILS or LOC RWY 22

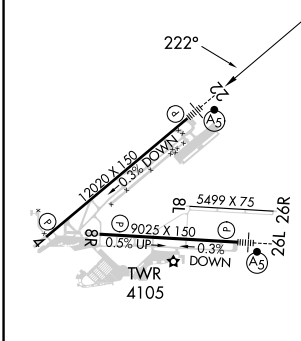
EL PASO INTL (ELP)

RADAR required when R-5103 in use.		MALSR 	MISSED APPROACH: Climb to 4600 then climbing left turn to 8000 on heading 050° and on ELP VORTAC R-081 to GIFEN INT/ELP 7 DME and hold, continue climb-in-hold to 8000.
<p><b>⚠</b> Circling NA for Cat D and E north of Rwy 26R and northwest of Rwy 4.  <b>⚠</b> For inop ALS, increase S-ILS 22 Cat E visibility to RVR 4000, S-LOC 22 ASR Cats C/D/E to RVR 5500.</p>			

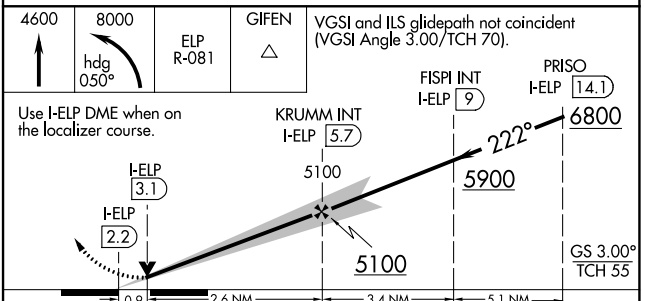
D-ATIS <b>120.0 254.3</b>	EL PASO APP CON <b>124.25 298.85</b>	EL PASO TOWER <b>118.3 239.275</b>	GND CON <b>121.9 348.6</b>	CLNC DEL <b>125.0 379.1</b>
------------------------------	---	---------------------------------------	-------------------------------	--------------------------------



ELEV 3962	<b>D</b>	TDZE 3950
-----------	----------	-----------



MIRL Rwy 8L-26R	REIL Rwys 4 and 8R	HIRL Rwys 4-22 and 8R-26L	FAF to MAP 3.4 NM		
Knots	60	90	120	150	180
Min:Sec	3:24	2:16	1:42	1:22	1:08



CATEGORY	A	B	C	D	E
S-ILS 22	4150/24 200 (200-½)				
S-LOC 22	4300/24	350 (400-½)	4300/30 350 (400-¾)		
<b>C</b> CIRCLING	4420-1 458 (500-1)	4440-1 478 (500-1)	4480-1½ 518 (600-1½)	4680-2¼ 718 (800-2¼)	4700-2½ 738 (800-2½)

SC-3, 28 NOV 2024 to 26 DEC 2024

SC-3, 28 NOV 2024 to 26 DEC 2024