

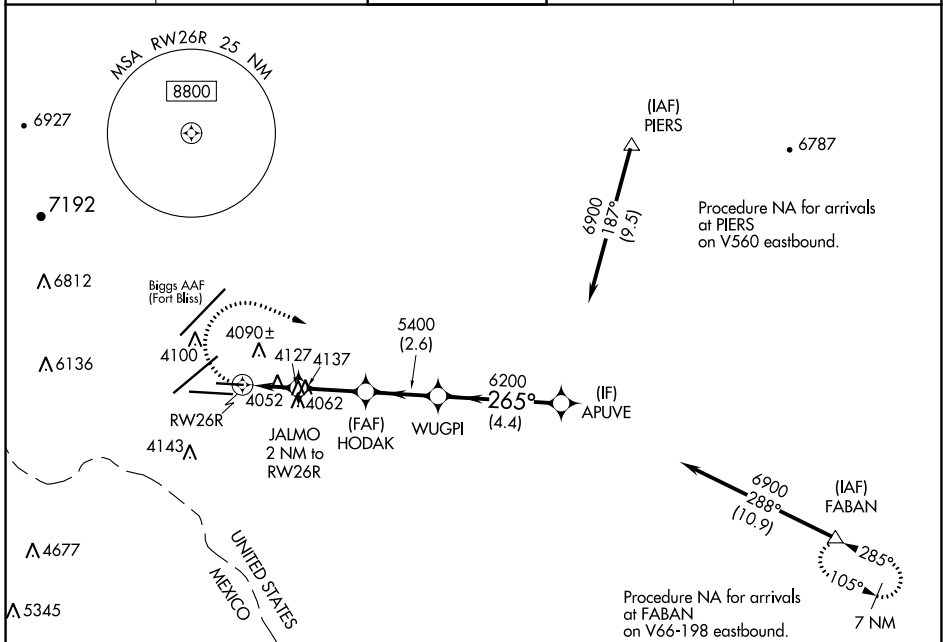
APP CRS	Rwy Idg	5499
265°	TDZE	3950
	Apt Elev	3962

RNAV (GPS) RWY 26R

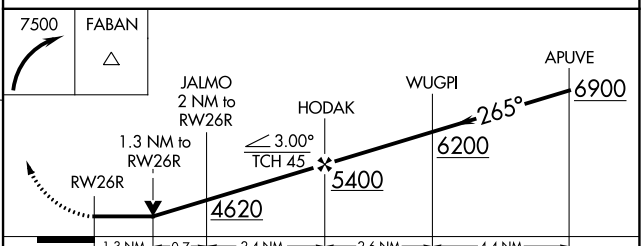
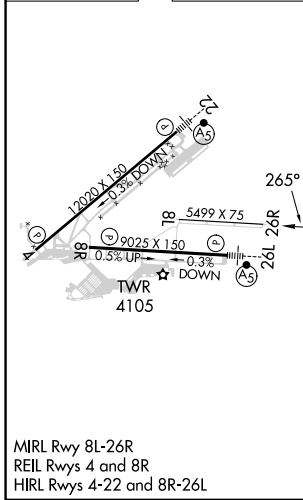
EL PASO INTL (ELP)

RNP APCH-GPS		MISSED APPROACH: Climbing right turn 7500 direct FABAN and hold.		
<p>ASR Circling NA for Cat D north of Rwy 26R and northwest of Rwy 4. Rwy 26R helicopter visibility reduction below ¼ SM NA.</p>				

D-ATIS	EL PASO APP CON	EL PASO TOWER	GND CON	CLNC DEL
120.0 254.3	124.25 298.85	118.3 239.275	121.9 348.6	125.0 379.1



ELEV 3962	D	TDZE 3950
-----------	----------	-----------



CATEGORY	A	B	C	D
LNAV MDA	4400-1	450 (500-1)	4400-1 3/8	450 (500-1 3/8)
C CIRCLING	4420-1 458 (500-1)	4440-1 478 (500-1)	4480-1 1/2 518 (600-1 1/2)	4680-2 1/4 718 (800-2 1/4)

SC-3, 28 NOV 2024 to 26 DEC 2024

SC-3, 28 NOV 2024 to 26 DEC 2024