

| | | |
|-------------|----------|--------------|
| APP CRS | Rwy Idg | 12020 |
| 042° | TDZE | 3923 |
| | Apt Elev | 3962 |

RNAV (RNP) Y RWY 4

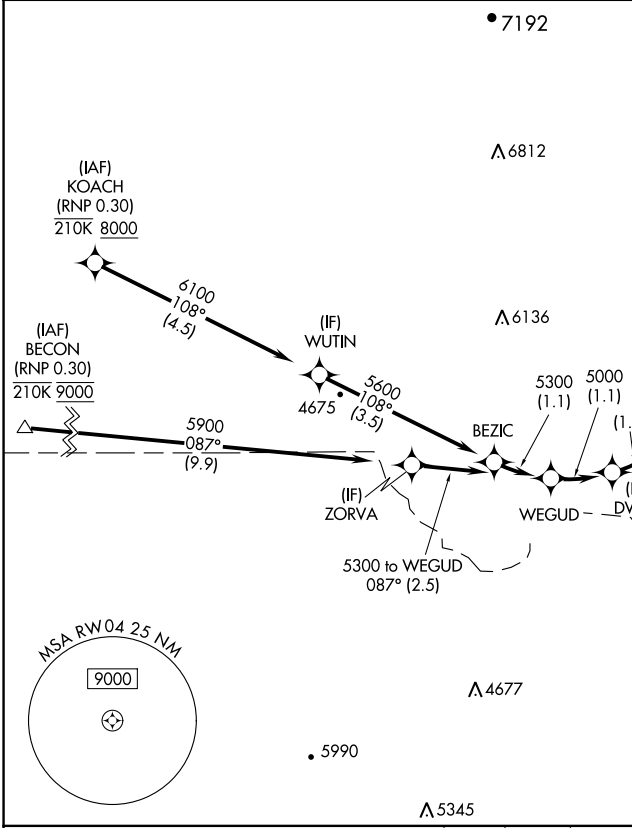
EL PASO INTL (ELP)

RNP AR APCH. RF required.

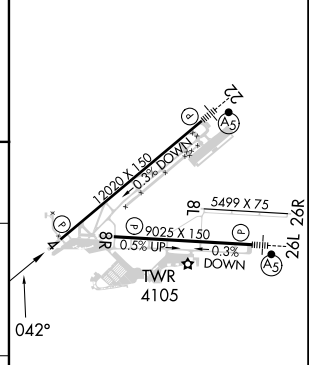
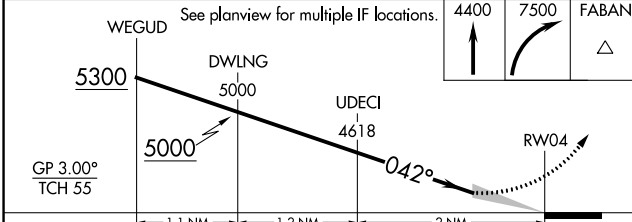
▼ For uncompensated Baro-VNAV systems, procedure NA below -22°C or above 54°C.

MISSED APPROACH: Climb to 4400 then climbing right turn to 7500 direct FABAN and hold.

| | | | | |
|--------------------|----------------------|----------------------|--------------------|--------------------|
| D-ATIS | EL PASO APP CON | EL PASO TOWER | GND CON | CLNC DEL |
| 120.0 254.3 | 124.25 298.85 | 118.3 239.275 | 121.9 348.6 | 125.0 379.1 |



| | | | |
|------|-------------|------|-------------|
| ELEV | 3962 | TDZE | 3923 |
|------|-------------|------|-------------|



| CATEGORY | A | B | C | D |
|-------------|---|---------|--------------|---|
| RNP 0.20 DA | | 4271/55 | 348 (400-1) | |
| RNP 0.30 DA | | 4340/60 | 417 (400-1½) | |

AUTHORIZATION REQUIRED

MIRL Rwy 8L-26R
 REIL Rwy 4 and 8R
 HIRL Rwy 4-22 and 8R-26L

SC-3, 28 NOV 2024 to 26 DEC 2024

SC-3, 28 NOV 2024 to 26 DEC 2024