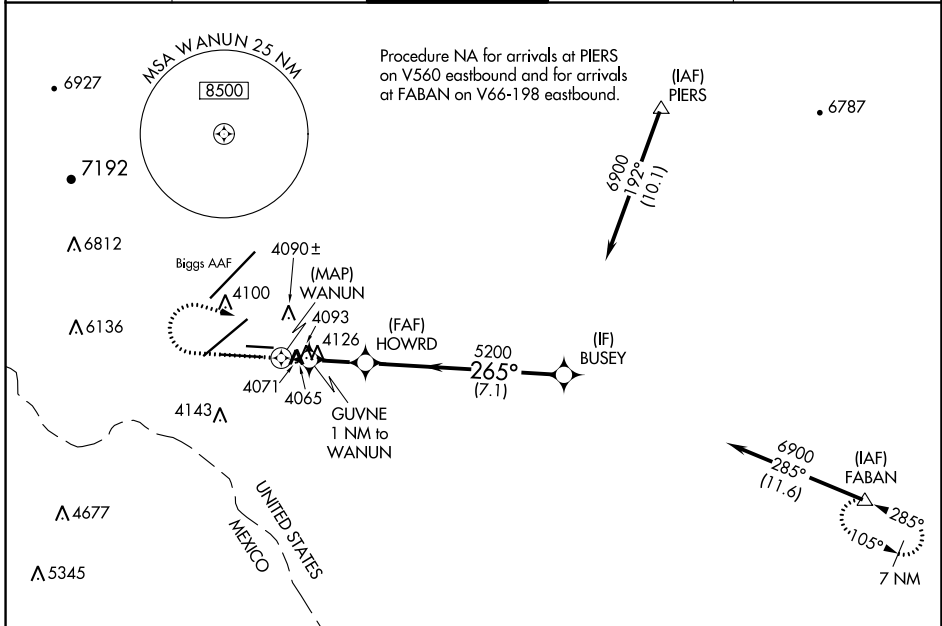


WAAS CH 40223	APP CRS 265°	Rwy Idg TDZE Apt Elev	9025 3962 3962
W26A			

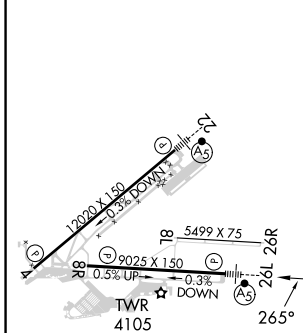
RNAV (GPS) Y RWY 26L

EL PASO INTL (ELP)

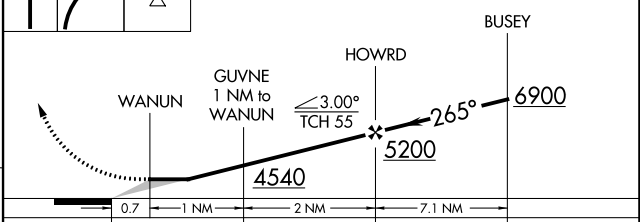
RNP APCH-GPS.		MALSR	MISSED APPROACH: Climb to 4380 then climbing right turn to 7500 direct FABAN and hold.	
<p>⚠ Circling NA for Cat D west of Rwy 4-22. For inop ALS, increase LP and LNAV Cat A/B visibility to 1 SM, and Cat C/D to 1½ SM.</p>				
D-ATIS 120.0 254.3	EL PASO APP CON 124.25 298.85	EL PASO TOWER 118.3 239.275	GND CON 121.9 348.6	CLNC DEL 125.0 379.1



ELEV 3962	D	TDZE 3962
-----------	----------	-----------



4380	7500	FABAN	VGSI and descent angles not coincident (VGSI Angle 3.00/TCH 75).
------	------	-------	--



CATEGORY	A	B	C	D
LP MDA	4380-¾ 418 (500-¾)			
LNAV MDA	4380-¾ 418 (500-¾)			
C CIRCLING	4420-1 458 (500-1)	4440-1 478 (500-1)	4480-1½ 518 (600-1½)	4680-2¼ 718 (800-2¼)

MIRL Rwy 8L-26R
REIL Rwy 4 and 8R
HIRL Rwy 4-22 and 8R-26L

SC-3, 28 NOV 2024 to 26 DEC 2024

SC-3, 28 NOV 2024 to 26 DEC 2024