

ENID, OKLAHOMA

ILS or LOC RWY 17C

VANCE AFB (KEND)

LOC I-LVC 108.9	APCH CRS 175°	Rwy Idg 9217
		TDZE 1277
		Arprt Elev 1307

AL-135 [USAF]

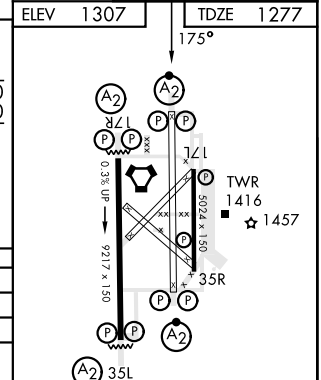
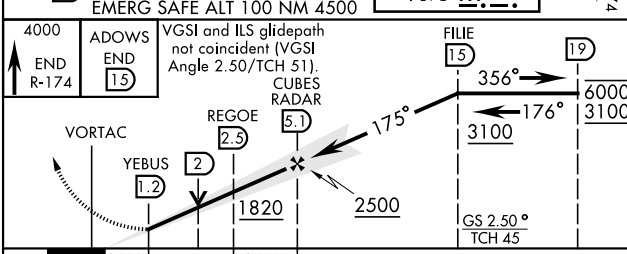
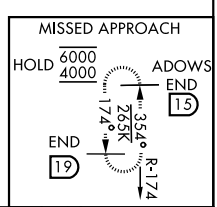
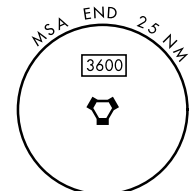
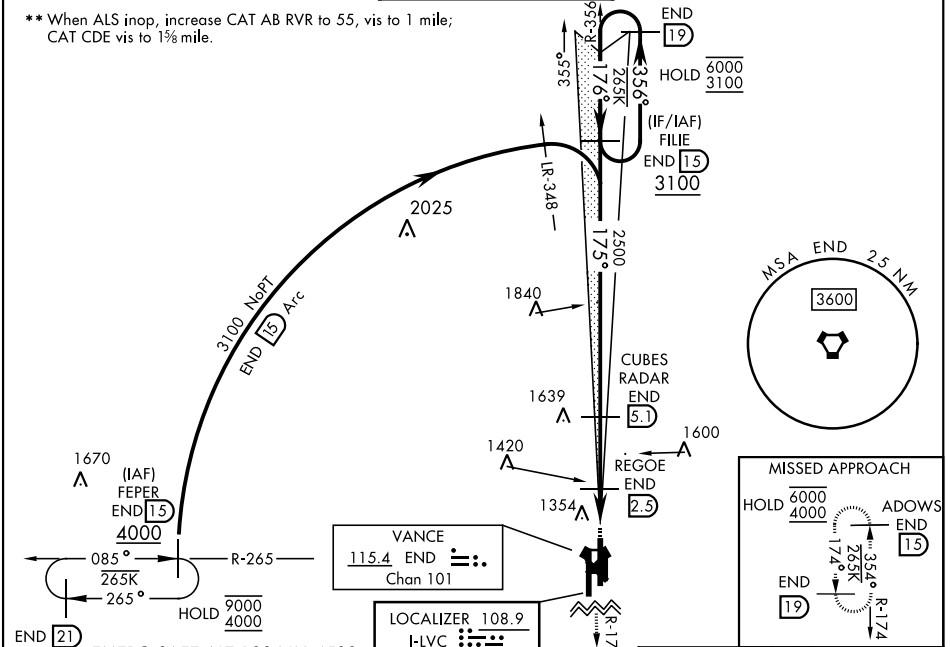
RADAR or DME required.

SALSF

MISSED APPROACH: Climb to 4000, intercept
END VORTAC R-174 to ADOWS and hold.

* When ALS inop, increase CAT AB RVR to 55, vis to 1 mile;
CAT CDE RVR to 60, vis to 1½ miles.

ATIS ★ 115.4 263.15	APP CON 125.45 388.2 EAST 126.75 346.325 WEST	TOWER ★ 124.05 259.1	GND CON 121.675 289.4	CLNC DEL 225.4
-------------------------------	-------------------------------------------------------------------	--------------------------------	---------------------------------	--------------------------



CATEGORY	A	B	C	D	E
S-ILS 17C	1477/40		200	(200-¾)	
S-LOC 17C *	1680/40 403 (400-¾)		1680/50 403 (400-1)		
CIRCLING	1760-1		1800-1½	1900-2	2300-3
	453 (500-1)		493 (500-1½)	593 (600-2)	993 (1000-3)
WITHOUT REGOE FIX					
S-LOC 17C **	1820/40 543 (600-¾)		1820-1½ 543 (600-1½)		
CIRCLING	1820-1		1820-1½	1900-2	2300-3
	513 (600-1)		513 (600-1½)	593 (600-2)	993 (1000-3)

HIRL Rwy 17C-35C, 17R-35L				
MIRL Rwy 17L-35R				
REIL Rwy 17L-35R				
FAF to MAP 3.9 NM				
Knots	60	90	120	150 180
Min:Sec	3:54	2:36	1:57	1:34 1:18

ENID, OKLAHOMA
Amdt 2 11AUG22

36° 20' N-97° 55' W

VANCE AFB (KEND)

ILS or LOC RWY 17C

SC-1, 28 NOV 2024 to 26 DEC 2024

SC-1, 28 NOV 2024 to 26 DEC 2024