

ENID, OKLAHOMA

# VOR/DME or TACAN RWY 17R

VORTAC END <b>115.4</b> Chan <b>101</b>	APCH CRS <b>162°</b>	Rwy Idg <b>9217</b> TDZE <b>1287</b> Arprt Elev <b>1307</b>
---	-------------------------	---

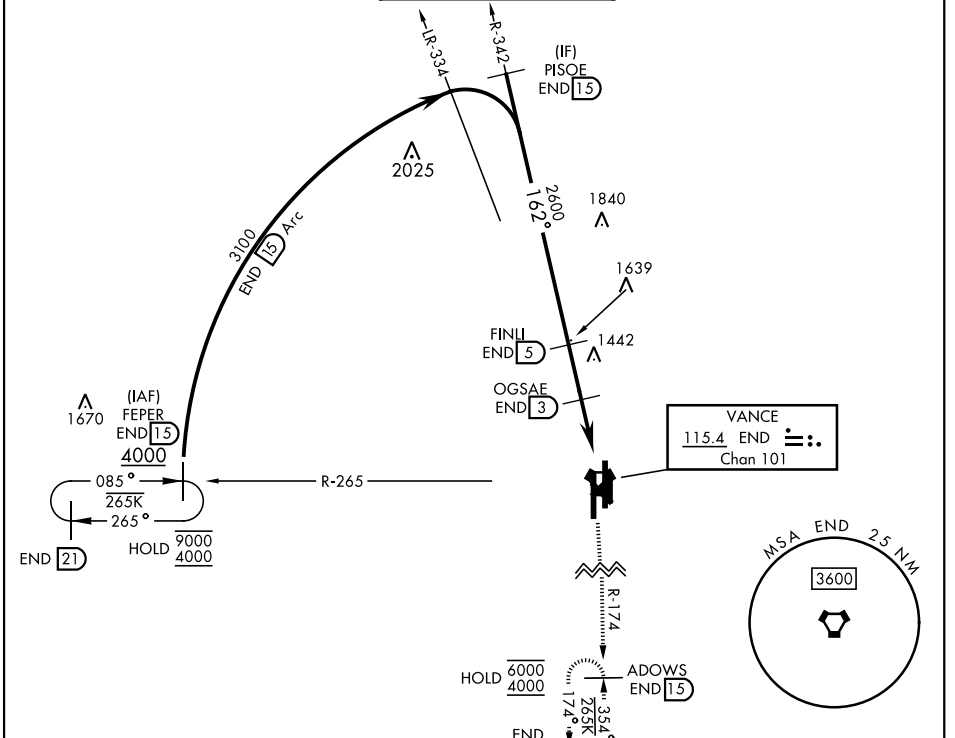
AL-135 [USAF]

VANCE AFB (KEND)

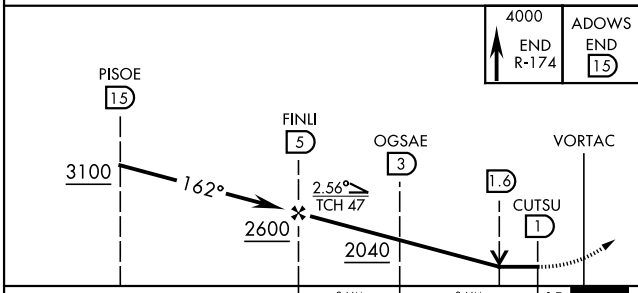
▼ \* When ALS inop, increase CAT AB vis to 1 mile, CAT CDE vis to 1½ miles.

SALS (A2) MISSED APPROACH: Climb to 4000, intercept END VORTAC R-174 to ADOWS and hold.

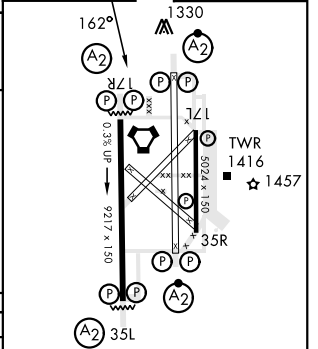
ATIS ★ <b>115.4 263.15</b>	APP CON <b>125.45 388.2 EAST</b> <b>126.75 346.325 WEST</b>	TOWER ★ <b>124.05 259.1</b>	GND CON <b>121.675 289.4</b>	CLNC DEL <b>225.4</b>
-------------------------------	---	--------------------------------	---------------------------------	--------------------------



EMERG SAFE ALT 100 NM 4500



ELEV 1307	TDZE 1287
-----------	-----------



CATEGORY	A	B	C	D	E
S-17R *	1680-¾	393 (400-¾)	1680-7/8	393 (400-7/8)	
⊙ CIRCLING	1760-1	453 (500-1)	1800-1½	1900-2	2300-3
			493 (500-1½)	593 (600-2)	993 (1000-3)

HIRL Rwy 17C-35C, 17R-35L  
MIRL Rwy 17L-35R  
REIL Rwy 17L-35R

ENID, OKLAHOMA  
Amdt 5 06OCT22

36° 20' N - 97° 55' W

VANCE AFB (KEND)

# VOR/DME or TACAN RWY 17R

SC-1, 28 NOV 2024 to 26 DEC 2024

SC-1, 28 NOV 2024 to 26 DEC 2024