

WAAS CH 82308 W21A	APP CRS 207°	Rwy Idg TDZE 1276 Apt Elev 1276
--	------------------------	---

RNAV (GPS) RWY 21

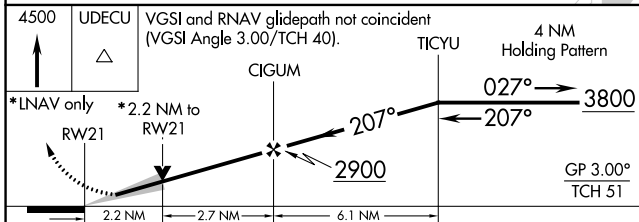
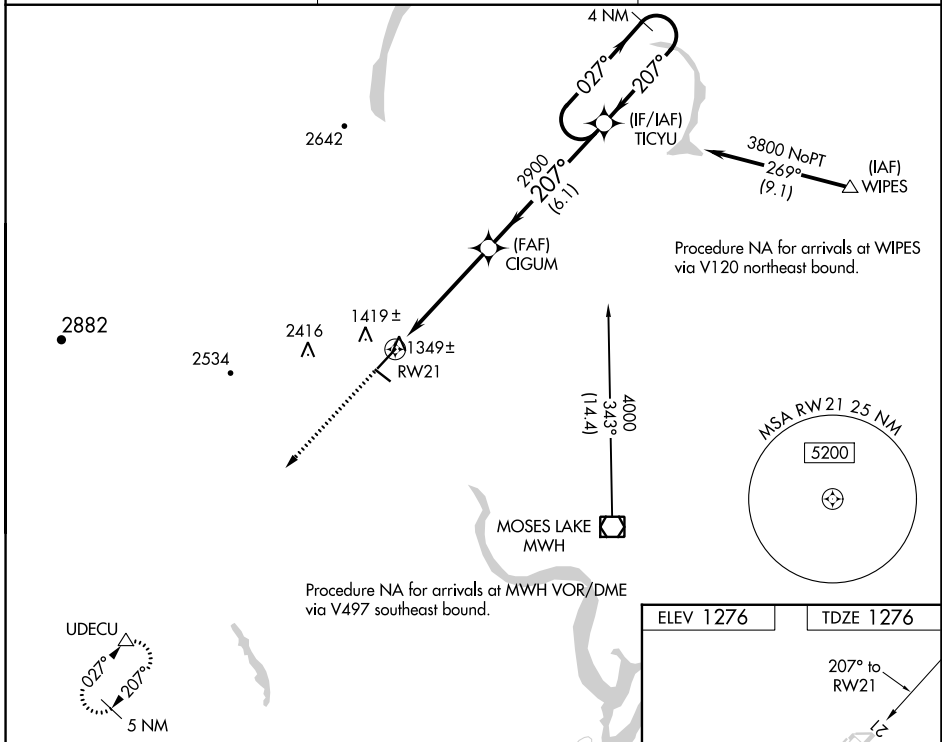
EPHRATA MUNI (EPH)

RNP APCH.

⚠ For uncompensated Baro-VNAV systems, LNAV/VNAV NA below -17°C or above 46°C. VDP and Baro-VNAV NA when using Moses Lake/Grant County Intl altimeter setting. When local altimeter setting not received, use Moses Lake/Grant County Intl altimeter setting and increase all DA/MDA 40 feet; increase visibility LPV all Cats, and LNAV Cats C and D ¼ SM.

MISSED APPROACH: Climb to 4500 direct UDECU and hold.

ASOS 135.775	GRANT COUNTY APP CON * 126.4 379.95	UNICOM 122.8 (CTAF) 0
------------------------	---	---------------------------------



CATEGORY	A	B	C	D
LPV DA		1526-¾	250 (300-¾)	
LNNAV/VNAV DA		2171-4	895 (900-4)	
LNNAV MDA	2020-1 744 (800-1)	2020-1¼ 744 (800-1¼)	2020-2¼ 744 (800-2¼)	2020-2½ 744 (800-2½)

ELEV 1276	TDZE 1276
-----------	-----------

Diagram details: RWY 21, RWY 4-22 for gliders only. 1334, 5500 MSL, 3843 X 40, 0.3% GP. ELEV 1276, TDZE 1276. REIL Rwy 3, 11, 21 and 29. MIRL Rwy 11-29 and 3-21.

NW-1, 28 NOV 2024 to 26 DEC 2024

NW-1, 28 NOV 2024 to 26 DEC 2024