

VORTAC EPH 112.6 Chan 73	APP CRS 202°	Rwy Idg 5500 TDZE 1276 Apt Elev 1276
--	------------------------	---

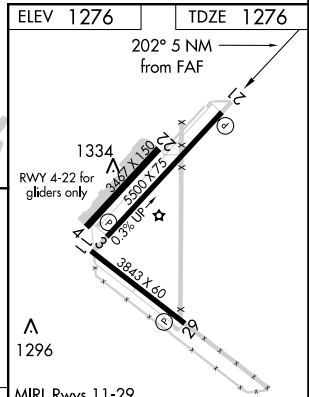
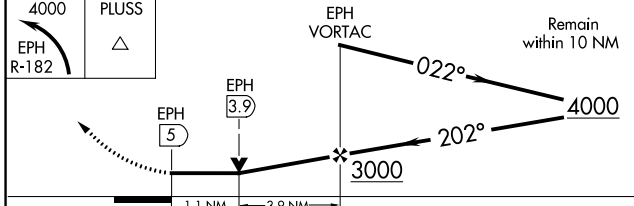
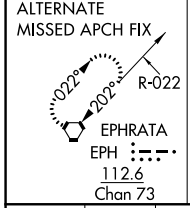
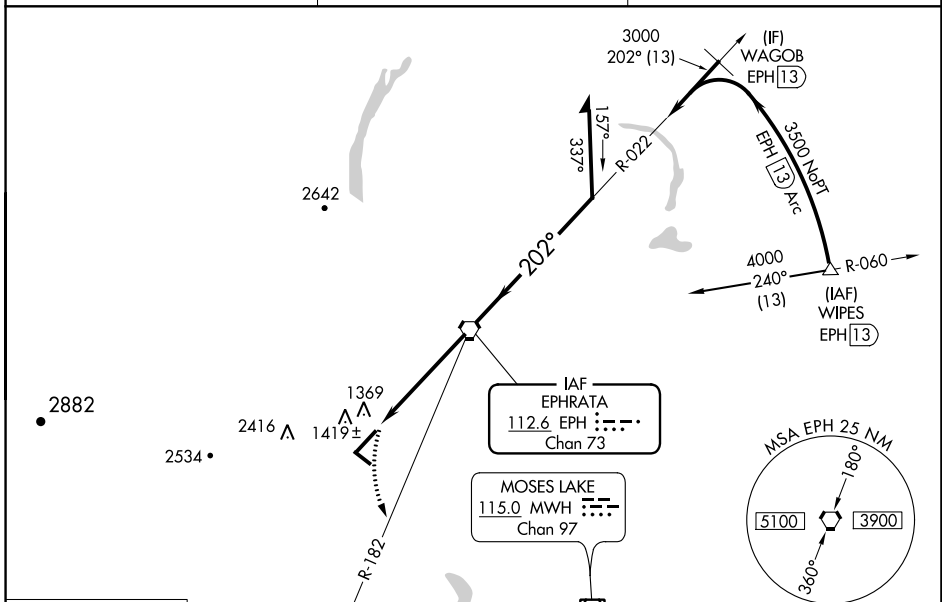
VOR RWY 21

EPHRATA MUNI (EPH)

⚠ When local altimeter setting not received, use Moses Lake/Grant County Intl altimeter setting and increase all MDA 40 feet, increase S-21 Cat D visibility ¼ mile. VDP NA when using Moses Lake/Grant County Intl altimeter setting. Final approach from EPH VORTAC holding pattern not authorized. Procedure turn required. Circling NA for Cats B, C and D northwest of Rwy 03-21.

MISSED APPROACH: Climbing left turn to 4000 via EPH R-182 to PLUS Int/EPH 13.3 DME and hold. Continue climb-in-hold to 4000.

ASOS 135.775	GRANT COUNTY APP CON* 126.4 379.95	UNICOM 122.8 (CTAF)
------------------------	--	-------------------------------



CATEGORY	A	B	C	D
S-21	1680-1	404 (500-1)	1680-1¼	404 (500-1¼)
CIRCLING	1740-1 464 (500-1)	1740-1 464 (500-1)	1780-1½ 504 (600-1½)	2500-3 1224 (1300-3)

MIRL Rwy 11-29 and 3-21	REIL Rwy 3, 11, 21 and 29	FAF to MAP 5 NM
Knots	60 90 120 150 180	
Min:Sec	5:00 3:20 2:30 2:00 1:40	

NW-1, 28 NOV 2024 to 26 DEC 2024

NW-1, 28 NOV 2024 to 26 DEC 2024