

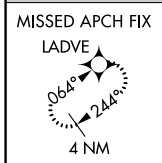
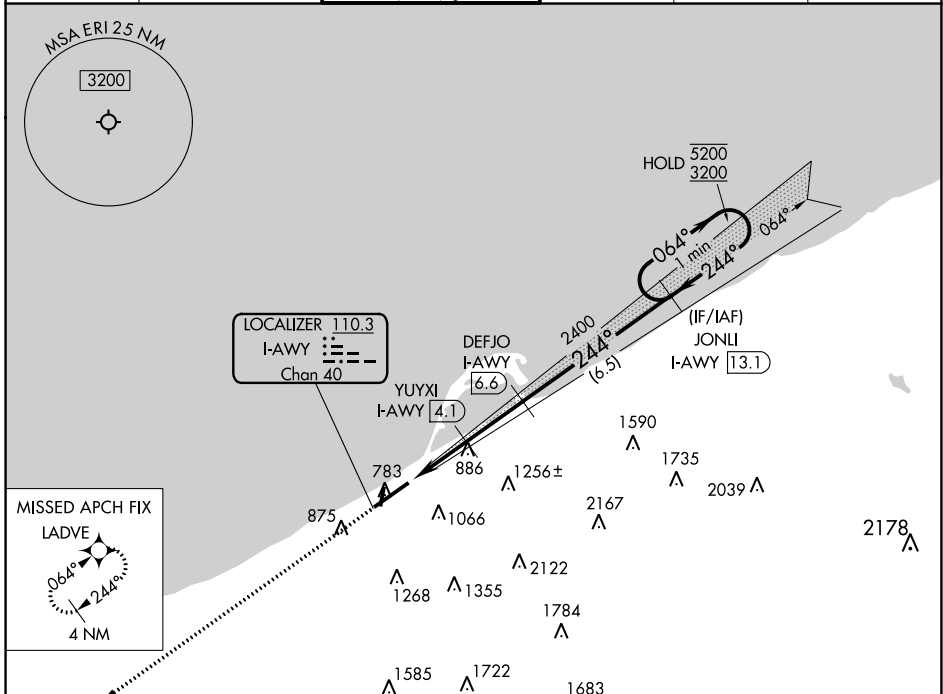
LOC/DME I-AWY 110.3 Chan 40	APP CRS 244°	Rwy Idg 7500 TDZE 730 Apt Elev 732
---	------------------------	---

ILS or LOC RWY 24

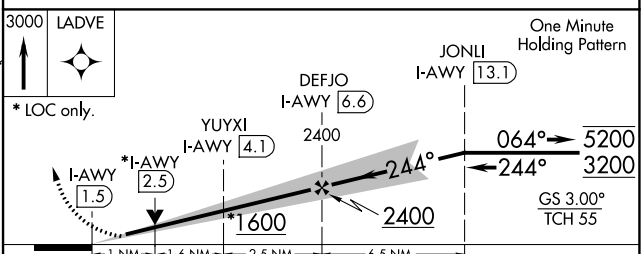
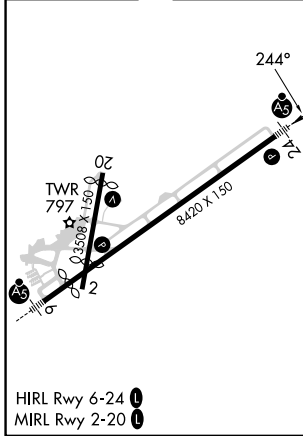
ERIE INTL/TOM RIDGE FLD (ERI)

RADAR required for procedure entry. RNAV 1-GPS and DME required.		MALSR 	MISSED APPROACH: Climb to 3000 direct LADVE and hold (GPS required).		
	Circling Rwy 2, 20 NA at night. Circling NA southeast of Rwy 6-24.				

ATIS 120.35	BUFFALO APP CON* 121.0 257.8	ERIE TOWER* 118.1 (CTAF) 257.8	GND CON 121.9	CLNC DEL 126.8	UNICOM 122.95
-----------------------	--	---	-------------------------	--------------------------	-------------------------



ELEV 732	D	TDZE 730
----------	----------	----------



CATEGORY	A	B	C	D
S-ILS 24	942/24		212 (300-1/2)	
S-LOC 24	1120/24	390 (400-1/2)	1120/35	390 (400-3/4)
C CIRCLING	1160-1 428 (500-1)	1200-1 468 (500-1)	1200-1 1/2 468 (500-1/2)	1340-2 608 (700-2)

NE-4, 28 NOV 2024 to 26 DEC 2024

NE-4, 28 NOV 2024 to 26 DEC 2024