

WAAS CH <b>86812</b> <b>W24A</b>	APP CRS <b>245°</b>	Rwy Idg <b>7500</b> TDZE <b>730</b> Apt Elev <b>732</b>
--	------------------------	---

# RNAV (GPS) RWY 24

ERIE INTL/TOM RIDGE FLD (ERI)

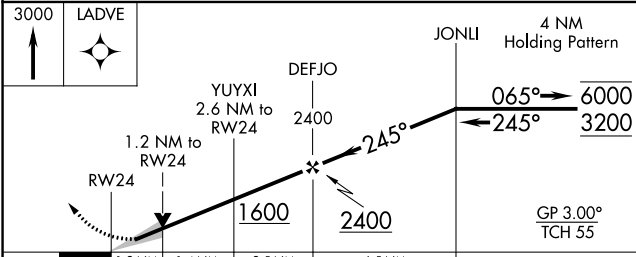
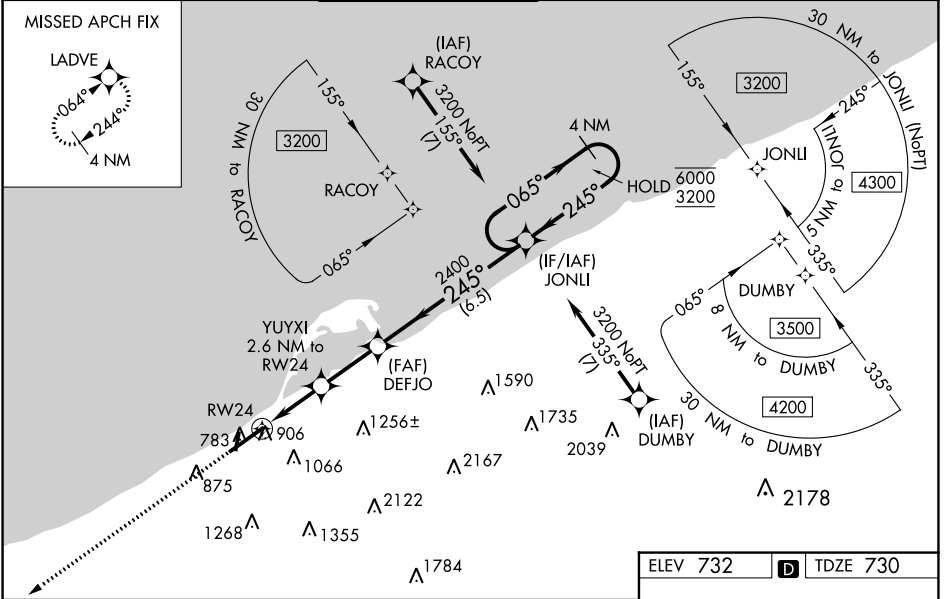
RNP APCH - GPS.

**⚠** Circling to Rwy 2 and 20 NA at night. Circling NA southeast of Rwy 6-24.  
**⚠** For uncompensated Baro-VNAV systems, LNAV/VNAV NA below -15°C or above 54°C. For inop ALS increase LNAV/VNAV all Cats visibility to RVR 6000.

MALSR

MISSED APPROACH:  
Climb to 3000 direct LADVE and hold.

ATIS <b>120.35</b>	BUFFALO APP CON ★ <b>121.0 257.8</b>	ERIE TOWER ★ <b>118.1 (CTAF) 257.8</b>	GND CON <b>121.9</b>	CLNC DEL <b>126.8</b>	UNICOM <b>122.95</b>
-----------------------	---	---	-------------------------	--------------------------	-------------------------



ELEV 732	D TDZE 730
----------	------------

This diagram shows the runway and taxiway layout. Key features include:
 

- RWY 24:** The main runway, 8420 x 150 ft.
- RWY 6-24:** A parallel runway.
- RWY 2-20:** A parallel runway.
- MALSR:** Located at the end of RWY 24.
- Distances:** Distances from the runway to various points are marked, such as 0.2 NM and 0.3 NM.

CATEGORY	A	B	C	D
LPV DA		942/24	212 (300-½)	
LNAV/VNAV DA		1146/40	416 (500-¾)	
LNAV MDA	1160/24	430 (500-½)	1160/40	430 (500-¾)
<b>C</b> CIRCLING	1160-1 428 (500-1)	1200-1 468 (500-1)	1200-1½ 468 (500-½)	1340-2 608 (700-2)

NE-4, 28 NOV 2024 to 26 DEC 2024

NE-4, 28 NOV 2024 to 26 DEC 2024