

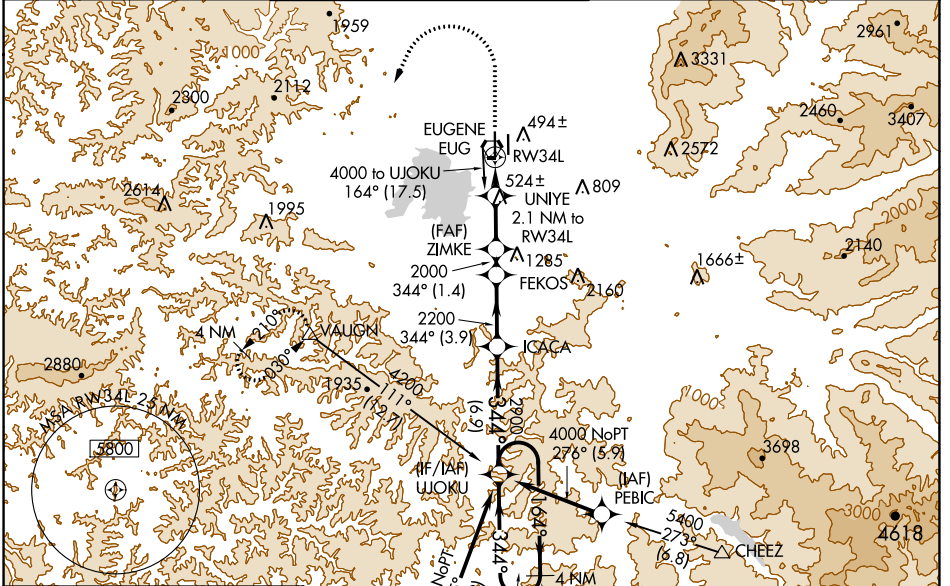
WAAS CH 45600 W 34A	APP CRS 344°	Rwy Idg TDZE Apt Elev	8009 368 374
---	------------------------	-----------------------------	---

RNAV (GPS) Y RWY 34L

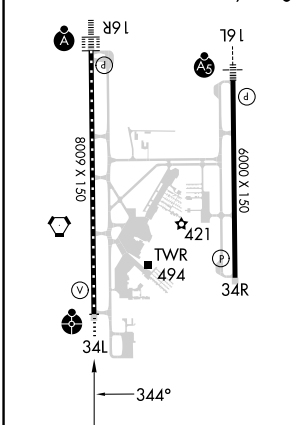
MAHLON SWEET FLD (EUG)

RNP APCH.	<p>Simultaneous approach authorized. LNAV procedure NA during simultaneous operations. Use of FD or AP providing RNAV track guidance required during simultaneous operations. For uncompensated Baro-VNAV systems, LNAV/VNAV NA below -10°C or above 54°C. For inop ALS increase LNAV/VNAV visibility Cats A-B to RVR 4500. Inop table does not apply to LPV minimums.</p>	<p>ODALS</p>	<p>MISSED APPROACH: Climb to 1500, then climbing left turn to 4000 direct VAUGHN and hold.</p>
-----------	--	--------------	--

ATIS 125.225	CASCADE APP CON★ 119.6 348.7	EUGENE TOWER★ 118.9 (CTAF) 0 371.9 (Rwy 16R/34L) 124.15 371.9 (Rwy 16L/34R)	GND CON 121.7 269.5	CLNC DEL 121.7 269.5	UNICOM 122.95
------------------------	--	--	-------------------------------	--------------------------------	-------------------------



ELEV 374	D	TDZE 368
HIRL Rwy 16L-34R and 16R-34L		
TDZ/CL Rwy 16R		
REIL Rwy 34R		



1500	4000	VAUGHN	△	FEKOS	ICACA	UJOKU	4 NM Holding Pattern
*LNAV only		UNIYE 2.1 NM to RW34L	ZIMKE 2000	FEKOS	ICACA 2200	UJOKU 164° → 6000	← 344° 4000
1.1 NM to RW34L		1080	2000	2200	2900	GP 3.00° TCH 53	
1.1 NM	1 NM	2.9 NM	1.4 NM	3.9 NM	6.9 NM		
CATEGORY	A	B	C	D			
LPV DA	568/40		200 (200-¾)				
LNAV/VNAV DA	657/40		289 (300-¾)				
LNAV MDA	760/40		392 (400-¾)		760/50		392 (400-1)
CIRCLING	820-1		840-1		1000-1¾		1140-2½
	446 (500-1)		466 (500-1)		626 (700-1¾)		766 (800-2½)

NW-1, 28 NOV 2024 to 26 DEC 2024

NW-1, 28 NOV 2024 to 26 DEC 2024